



**World Health  
Organization**

**Weekly  
AFP Surveillance Update  
Pakistan**

**Week 10** (*Ended on 13<sup>th</sup> March , 2010*)

AFP Surveillance



***National Surveillance Cell  
Federal EPI***

World Health Organization Country Office,  
Chak Shahzad, Park Road,  
Islamabad, Pakistan

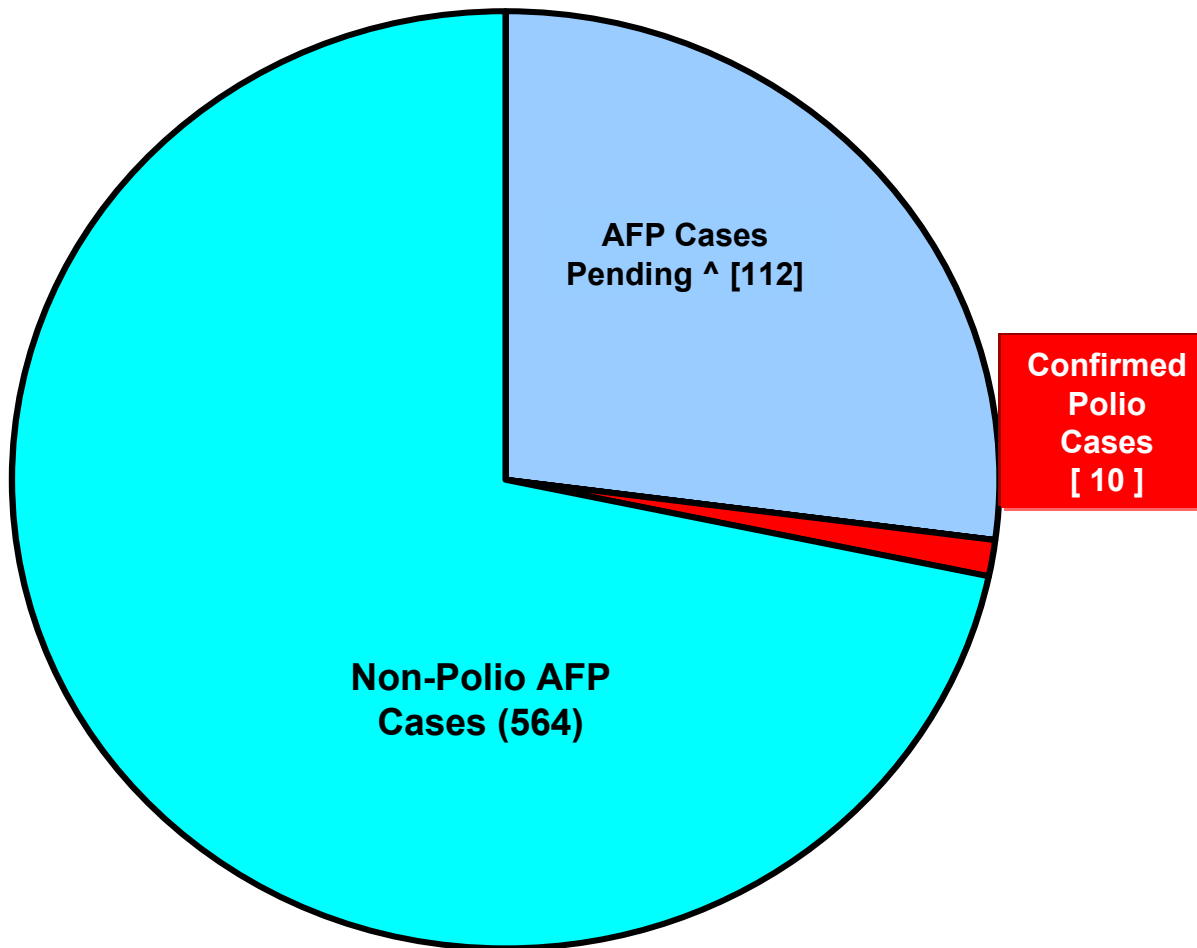
Tel: +92-51 9255123 / 9255282 /9255184

Fax: +92-51 9255192

*Email: [epidata@pak.emro.who.int](mailto:epidata@pak.emro.who.int)*

*Web site: [www.who.org/polioeradication](http://www.who.org/polioeradication)*

# AFP Case Profile 2010\*



**Total AFP Cases Reported in 2010 = 686**

**^ 9 Inadequate cases pending ERC;  
31 Inadequate cases pending FUP  
72 Pending Lab**

# Table 2: List of Confirmed Polio Cases, Pakistan 2010\* 1/1

S. NO.	PROVINCE	DISTRICT	EPID NO.	SEX	AGE (m)	DATE ONSET OF PARALYSIS	NO. OPV DOSES €		FEVER	Asymmetric Paralysis	Rapid Progression	REFUSAL	FUP	WPV TYPE	GENETICS		
							Routine	SIAs							Cluster	Cluster	Sub-Cluster
1	FATA	BAJOUR †	NW/33/10/001	F	9	01/01/2010	0	0	Y	Y	Y	Y		NSL1	B4	A-1	
2	BALUCHISTAN	QUETTA	BN/11/10/001	M	14	07/01/2010	0	7	Y	Y	Y	N		NSL3	B1	C-5	
3	FATA	BAJOUR †	NW/33/10/002	M	34	12/01/2010	0	7	Y	Y	Y	N		NSL3	B1	C-5	
4	SINDH	KHIGULSHAN	SD/65/10/002	M	18	19/01/2010	0	6	Y	N	Y	N	^	NSL3	B1	C-5	
5	NWFP	PESHAWAR	NW/30/10/006	F	5	27/01/2010	1	3	Y	Y	Y	N	^	NSL1	A3	D-2	
6	BALUCHISTAN	QUETTA	BN/11/10/003	F	24	30/01/2010	0	7+	Y	N	Y	N	^	NSL3	B1	C-5	
7	NWFP	SWAT †	NW/24/10/001	M	8	05/02/2010	0	4	Y	Y	Y	N	^	NSL3	B1	C-5	
8	BALUCHISTAN	QUETTA SADDAR	BN/11/10/004	F	35	17/02/2010	0	3	Y	Y	Y	Y	^	NSL3	B1	C-5	
9	FATA	BAJOUR †	NW/33/10/003	M	21	24/02/2010	3	0	Y	Y	Y	N	^	NSL3			
10	FATA	KHYBER †	NW/34/10/007	F	30	27/02/2010	3	7+	Y	Y	Y	N	^	NSL1			

New Cases

€ Based on recall of parents

† From areas having insecurity for long period.

\* Afp.rec Data as of 13-03-2010

FUP = Residual Weakness at 60days FUP

^ 60 days follow up not due

## *Table 3: LAB Update 2010\**

Month of onset	Cases	Cases under process		Negative cases	NPEV positive	NPEV %	Within 14 days results	Positive cases	
		Culture	ITD					Wild	Vaccine
January	398	3	0	314	57	14%	99%	6	18
February	309	54	0	206	20	6%	83%	4	25
March	43	40	1	0	0	0%	0%	0	2
<b>TOTAL AFP</b>	<b>750</b>	<b>97</b>	<b>1</b>	<b>520</b>	<b>77</b>	<b>10%</b>	<b>87%</b>	<b>10</b>	<b>45</b>

\* LAB.rec Data as of 15/03/2010

**Table 4: Urgent Pending Cases 2010\***

S. No.	DISTRICT	TEHSIL	EPID	DONSET	AGE	SEX	DOSSES	DLOPV	Urgent by Field	NSC Criteria	LAB NO.	Date of first stool collection	Date of Inoculation	Culture-update
1	PISHIN	PISHIN	BN/12/10/005	02-Mar-10	34	F	7+	15-Feb-10	Y	N	862	07-Mar-10	10-Mar-10	UP
2	CHARSADA	TANGI	NW/31/10/010	24-Feb-10	8	F	7+	15-Feb-10	Y	N	850	06-Mar-10	10-Mar-10	UP
3	MOHMAND	PINDIALI	NW/35/10/001	01-Mar-10	72	M	7+	UK	Y	N	865	06-Mar-10	10-Mar-10	UP
4	WAZIR-N	MIRAN SHAH	NW/64/10/002	23-Feb-10	12	M	1	UK	N	Y	817	01-Mar-10	06-Mar-10	UP
5	BAHAWALPUR	AHMADPUR EAST	PB/71/10/007	25-Feb-10	42	F	3	16-Feb-10	N	Y	820	02-Mar-10	06-Mar-10	UP
6	RYKHAN	SADIQABAD	PB/72/10/012	15-Jan-10	30	M	7+	16-Feb-10	Y	N	844	04-Mar-10	08-Mar-10	UP

Inadeq specimens - contact specimens collected & under process in Lab

¥ Fever, Rapid Progression, Age < 48months & Doses < 7  
 € Based on recall of parents

UK= Un-known

UP = Under process

\* Data as of 15-03-2010

**Table 5: List of samples from AFP Cases & Contacts pending for ITD\***

S.N o.	DISTRICT	TEHSIL	EPID	DONSET	AGE (m)	SEX	DOS E€	DLOPV	Urge nt by Field	¥ NSC Criteria	LAB NO.	Date of first stool collection	rRT-PCR
1	PESHAWAR	PESHAWAR	NW/30/10/020	04-Mar-10	M	30	7+	15-Feb-10	N	N	892	08-Mar-10	UP

UP=Under process

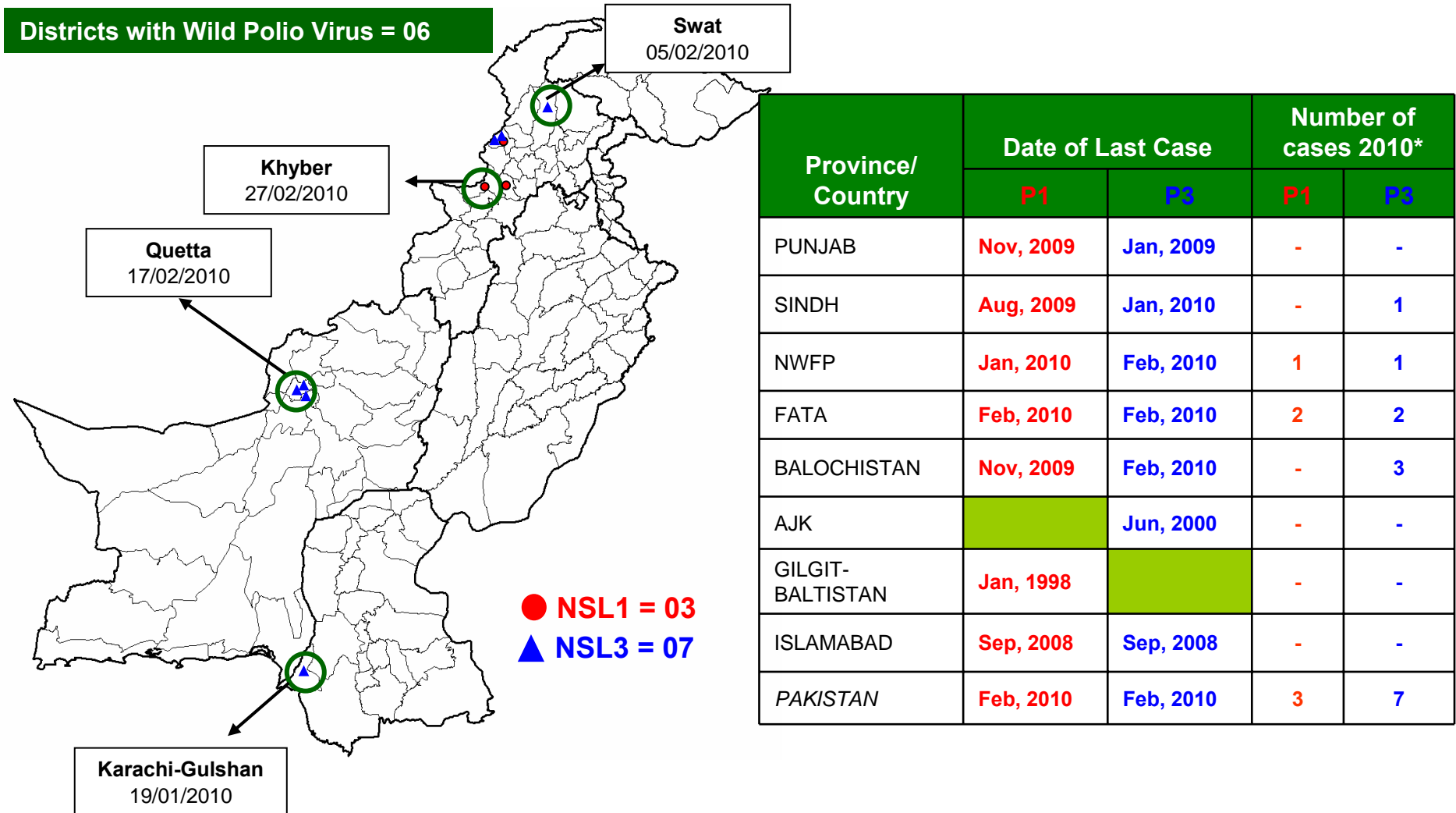
€ Based on recall of parents

¥ NSC Criteria = Fever , Rapid Progress, Age < 48 months and OPV Doses < 7

\* Data as of 15-03-2010



# Map 1.1: Distribution of Wild Polio Virus cases Pakistan 2010\*



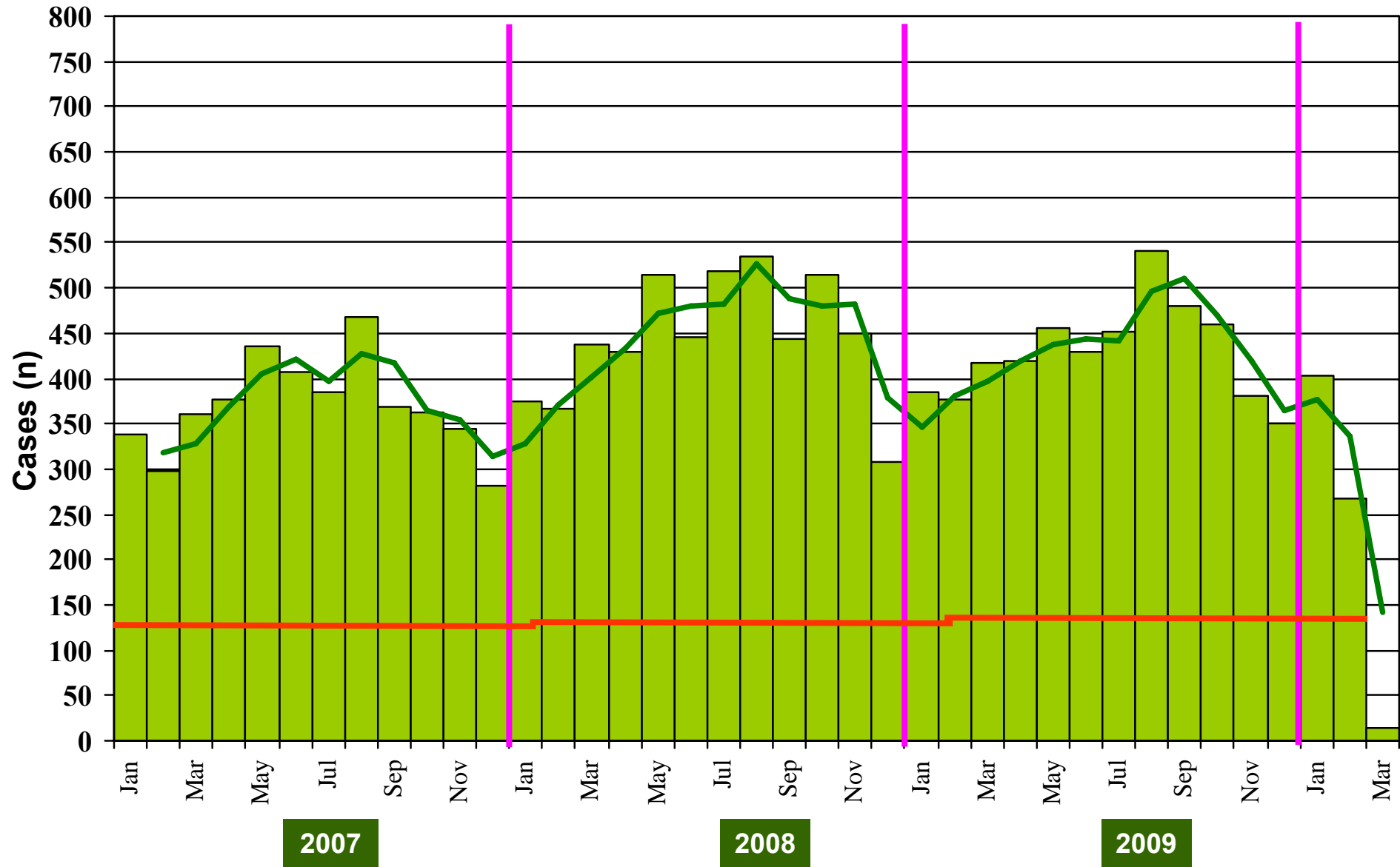
○ District with last polio case in province

Cases randomly placed in districts

— Provincial Boundary  
— Districts Boundary

\* Afp.rec Data as of 13-03-2010

**Graph 1: Distribution of AFP Cases by Month, Pakistan 2007-2010\***



**@ Non-polio AFP rate of 2/100,000 children < 15 years**

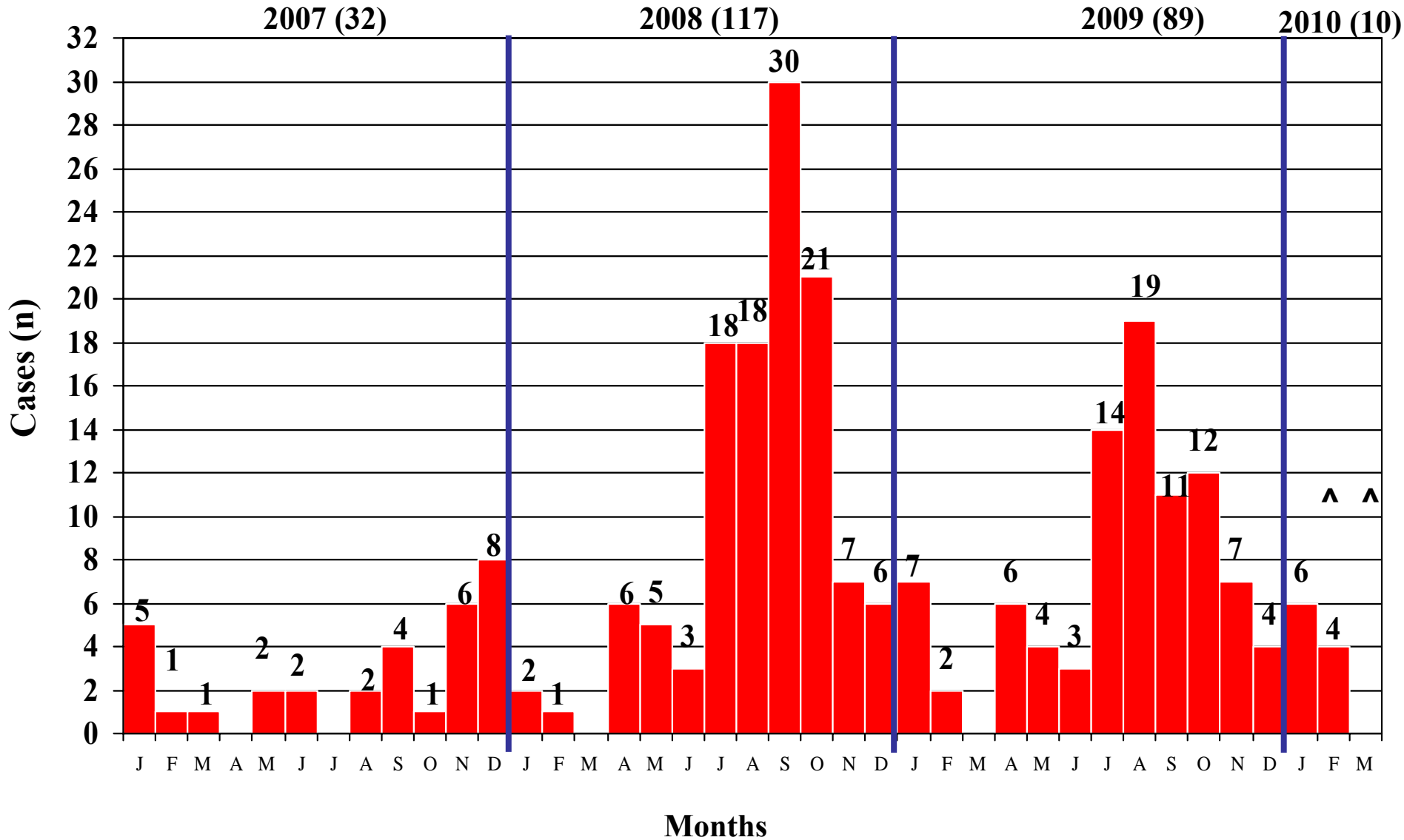
\*Afp.rec Data as of 13-03-2010

**Table 6: Distribution of AFP Cases By Week of Onset <sup>^</sup>  
Pakistan 2009/2010\* [Week number/Ending on]**

PROVINCE	W 47 28 Nov	W 48 05 Dec	W 49 12 Dec	W 50 19 Dec	W 51 26 Dec	W 52 02 Jan 2010	W 01 09 Jan	W 02 16 Jan	W 03 23 Jan	W 04 30 Jan	W 05 06 Feb	W 06 13 Feb	W 07 20 Feb	W 08 26 Feb	W 09 06 Mar	W 10 13 Mar
PUNJAB	37	28	43	30	25	46	41	43	38	31	30	36	39	23	17	2
SINDH	17	24	16	29	20	18	31	32	24	15	25	22	16	20	13	1
NWFP	10	12	20	23	11	11	21	20	22	15	15	13	16	15	10	1
FATA	0	0	2	3	2	5	0	2	2	0	1	3	1	7	1	0
BALUCHISTAN	6	4	2	4	5	5	4	6	6	4	4	6	4	3	2	0
AJK	1	2	1	0	2	2	3	2	1	0	2	0	0	1	0	0
GILGIT/ BILTISTAN	0	1	0	0	0	0	0	0	0	0	0	0	1	0	0	0
ISLAMABAD	0	0	0	0	0	1	0	0	0	0	0	0	0	0	0	0
PAKISTAN	71	71	84	89	65	88	100	105	93	65	77	80	77	69	43	4

\* Pak Lab.rec Data as of 13-03-2010

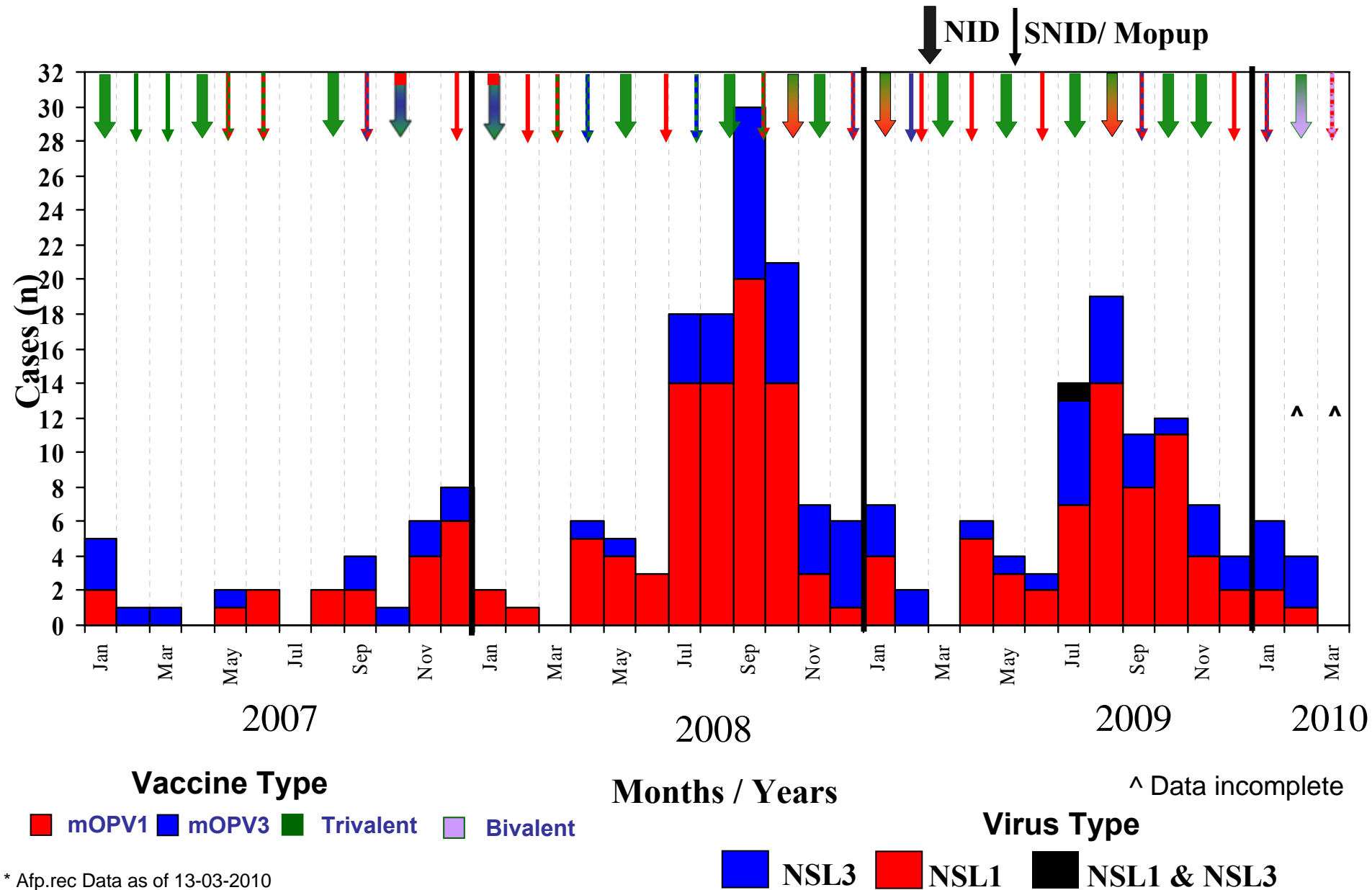
# Graph 2: Wild Polio Cases By Month, 2007- 2010\*



^ Data incomplete

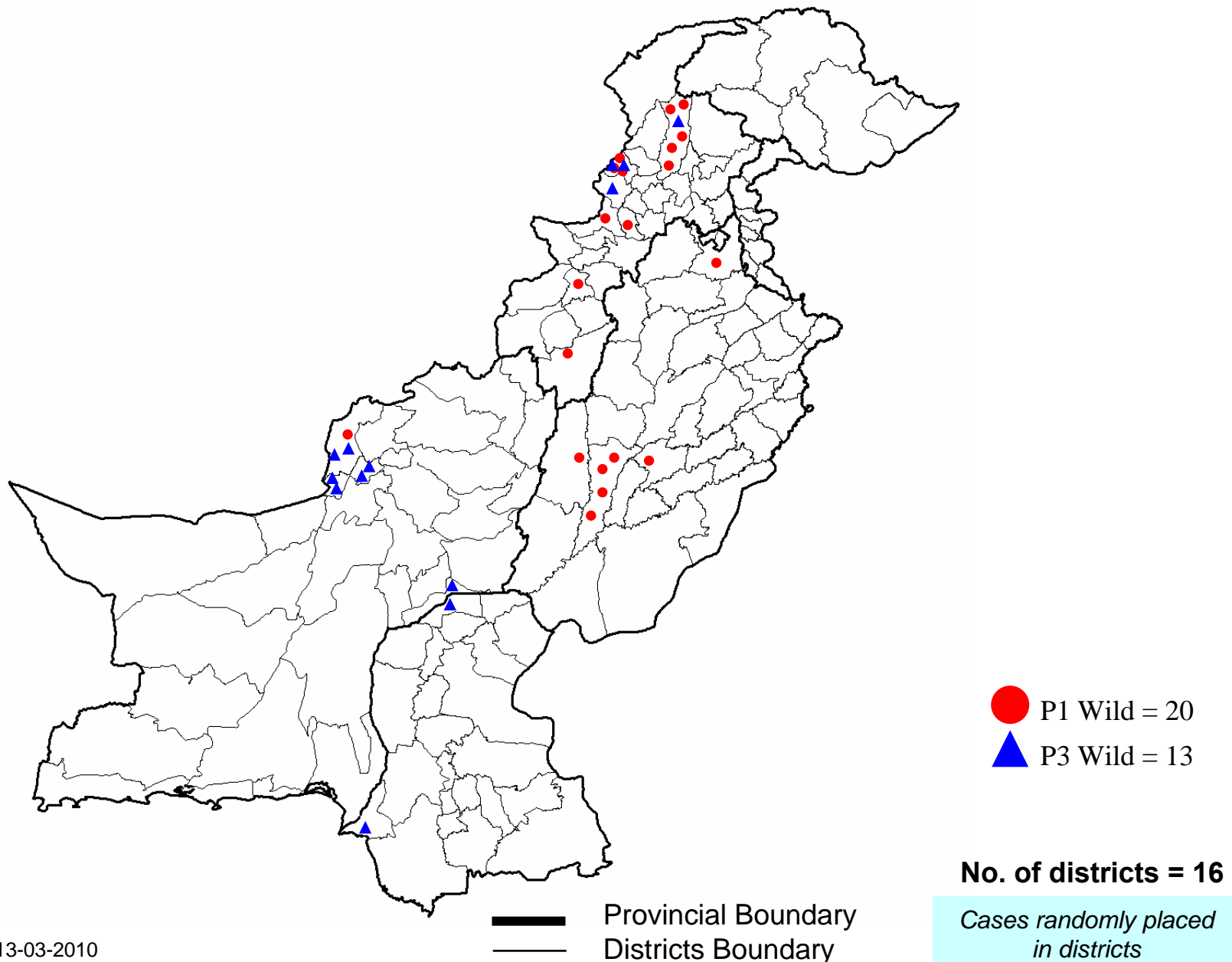
\* Afp.rec Data as of 13-03-2010

**Graph 3: Confirmed Polio Cases By Poliovirus Type, 2007-2010\***



\* Afp.rec Data as of 13-03-2010

# Map 2: Wild Polio cases in the last 6 months October 2009 to March 2010\*

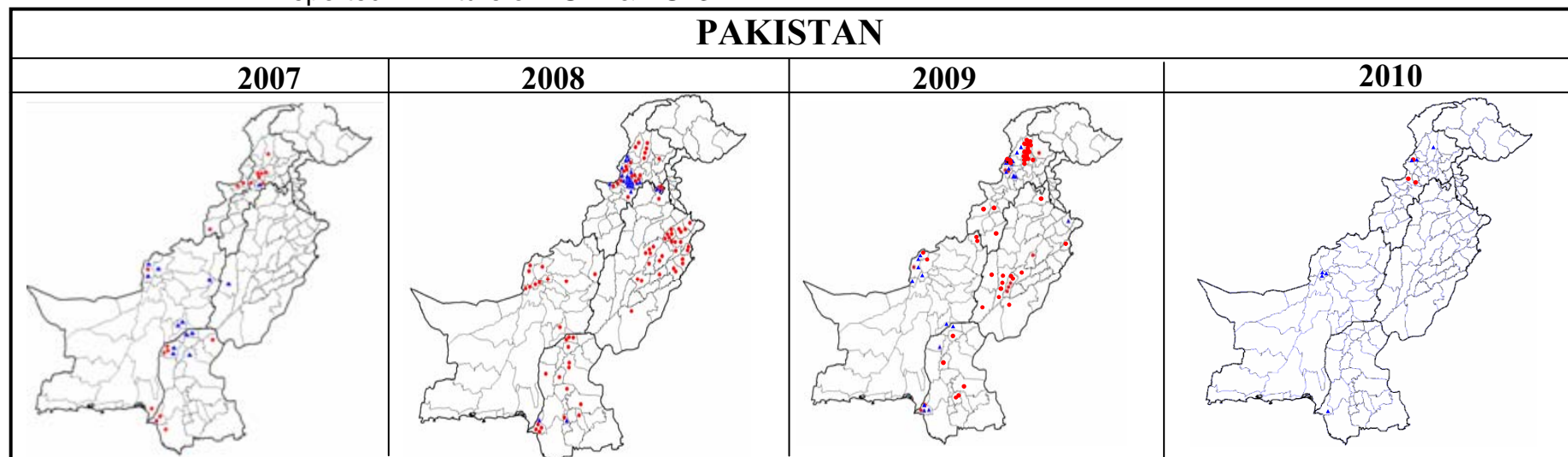


\* Afp.rec Data as of 13-03-2010

# Table 7: Polio Eradication Update, Pakistan 2007-2010\*

Province	Polio 1				Polio 3				Total Wild			
	2007	2008	2009	2010	2007	2008	2009	2010	2007	2008	2009	2010
PUNJAB	0	31	16	0	1	0	1	0	1	31	17	0
SINDH	7	16	7	0	5	2	5	1	12	18	12	1
NWFP	7	15	24	1	1	23	5	1	8	38	29	2
FATA^	3	7	8	2	0	7	11	2	3	14	20^	4
BALUCHISTAN	2	11	5	0	6	0	6	3	8	11	11	3
AJK	0	0	0	0	0	0	0	0	0	0	0	0
Gilgit-Baltistan	0	0	0	0	0	0	0	0	0	0	0	0
ISLAMABAD	0	3	0	0	0	2	0	0	0	5	0	0
<b>PAKISTAN</b>	<b>19</b>	<b>81</b>	<b>60</b>	<b>3</b>	<b>13</b>	<b>36</b>	<b>28</b>	<b>7</b>	<b>32</b>	<b>117</b>	<b>89</b>	<b>10</b>

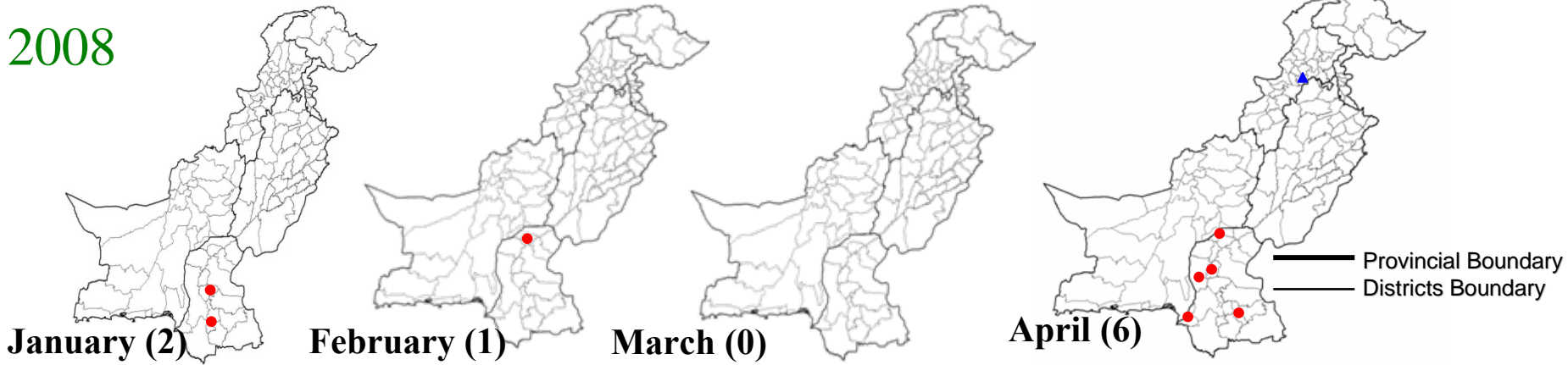
^ FATA reported 1 mixture of NSL1 & NSL3



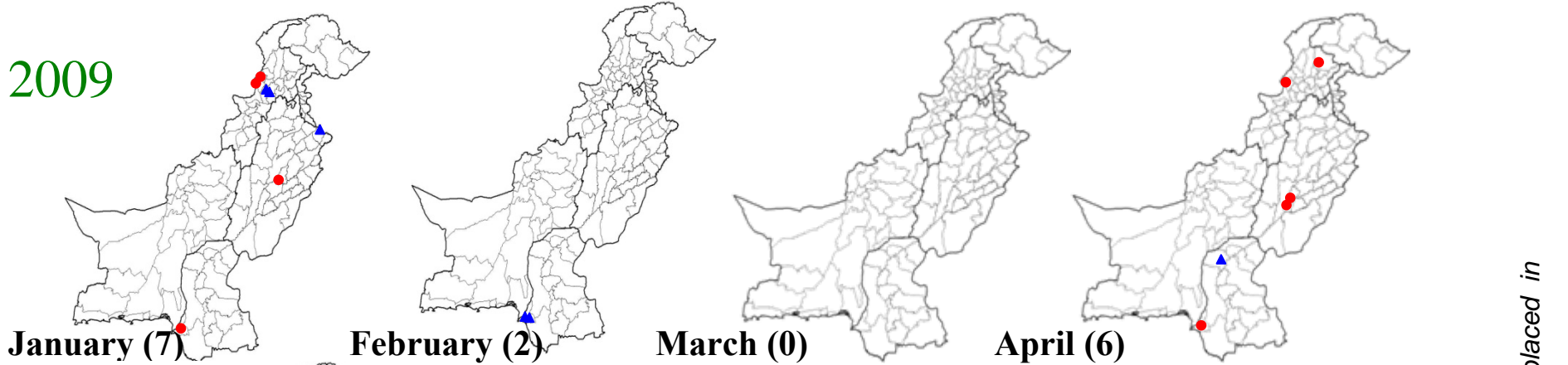
\* Afp.rec Data as of 13-03-2010

# Map 3: Monthly Comparison of P1 & P3 Polio Cases 2008-2010\*

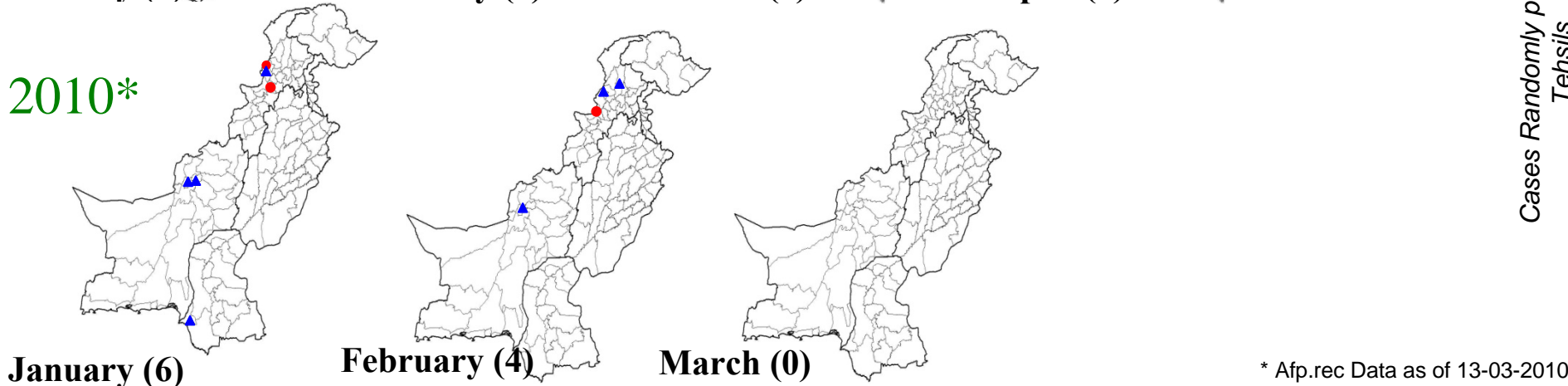
2008



2009



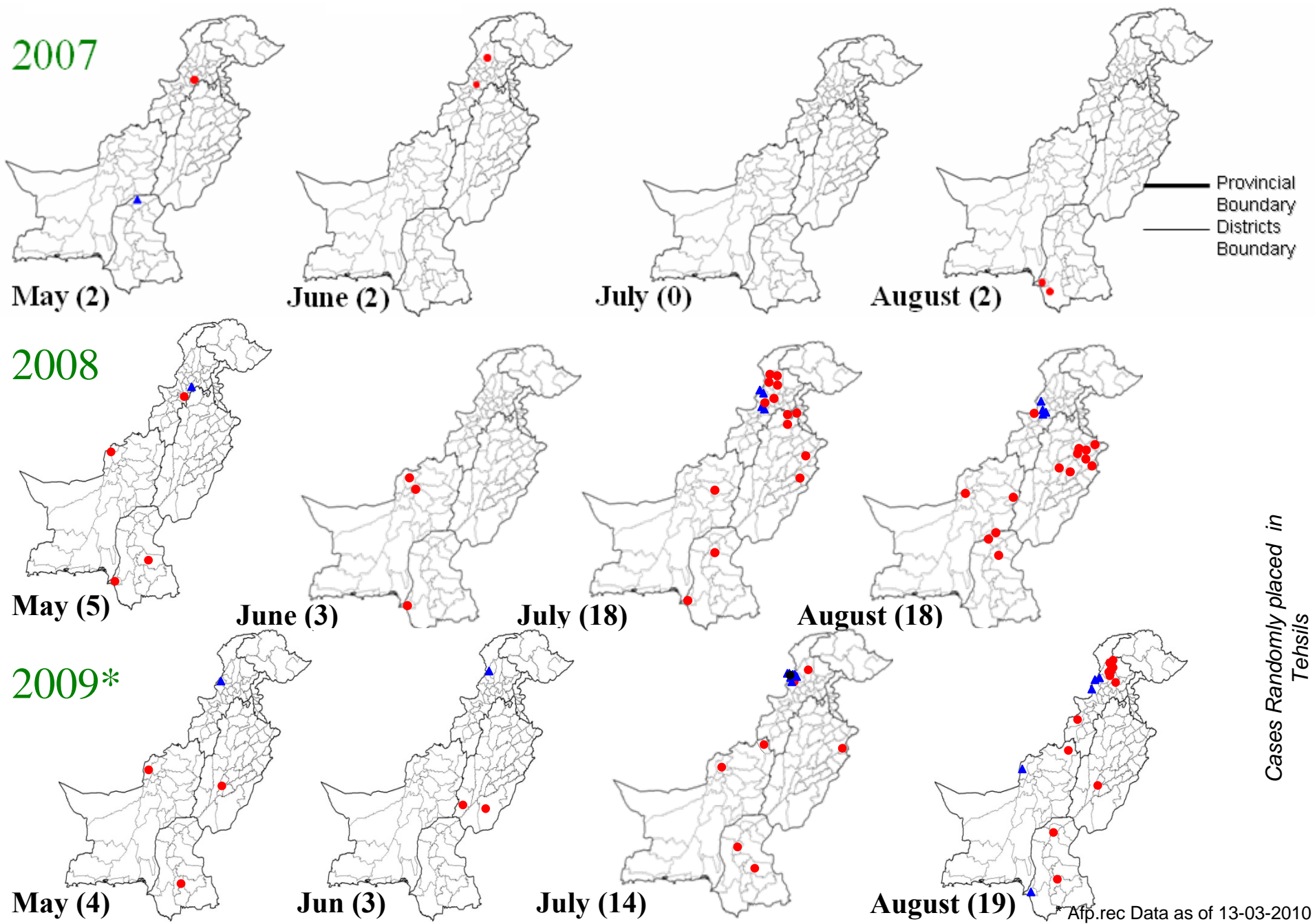
2010\*



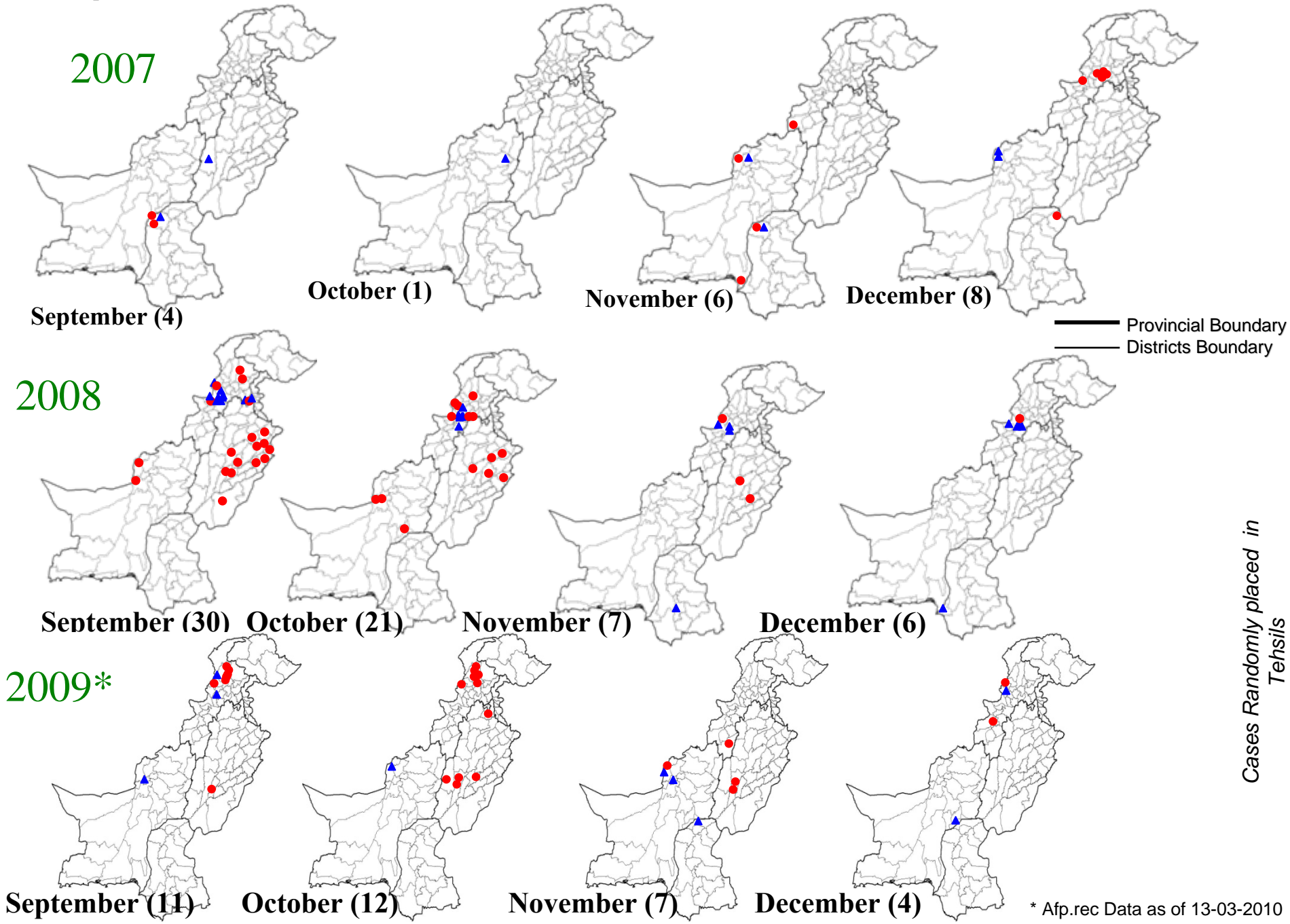
Cases Randomly placed in Tehsils

\* Afp.rec Data as of 13-03-2010

# Map 3.1: Monthly Comparison of P1 & P3 Polio Cases 2007-2009\*



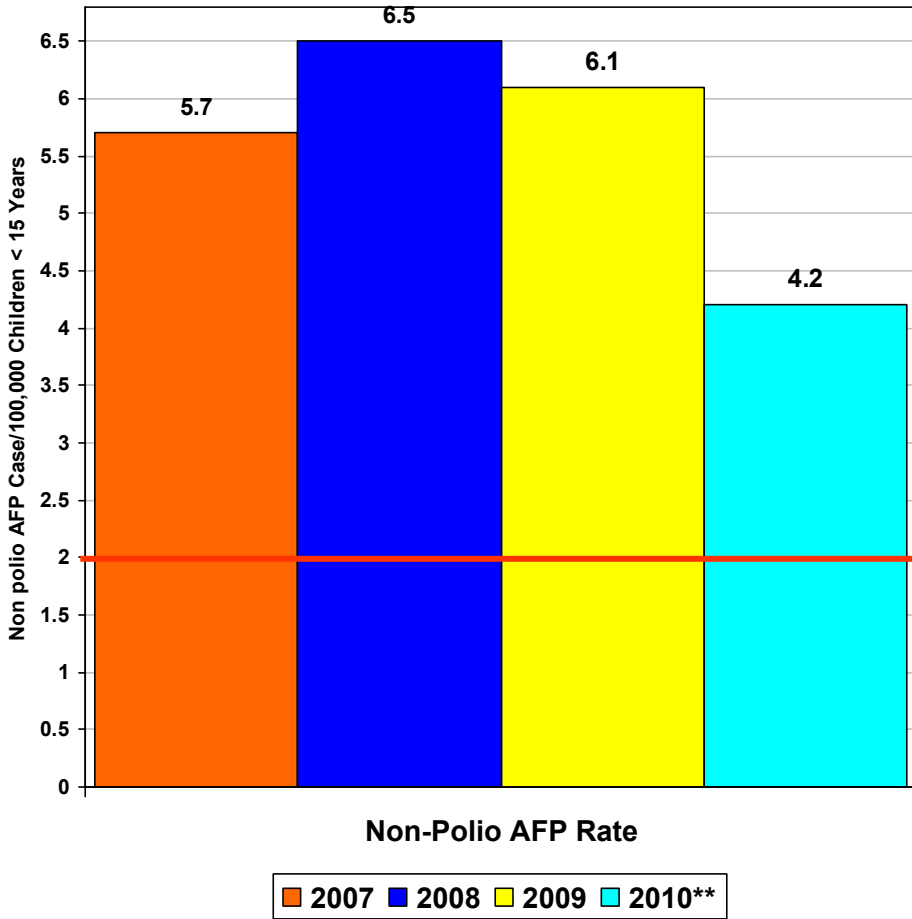
# Map 3.2: Monthly Comparison of P1 & P3 Polio Cases 2007-2009\*



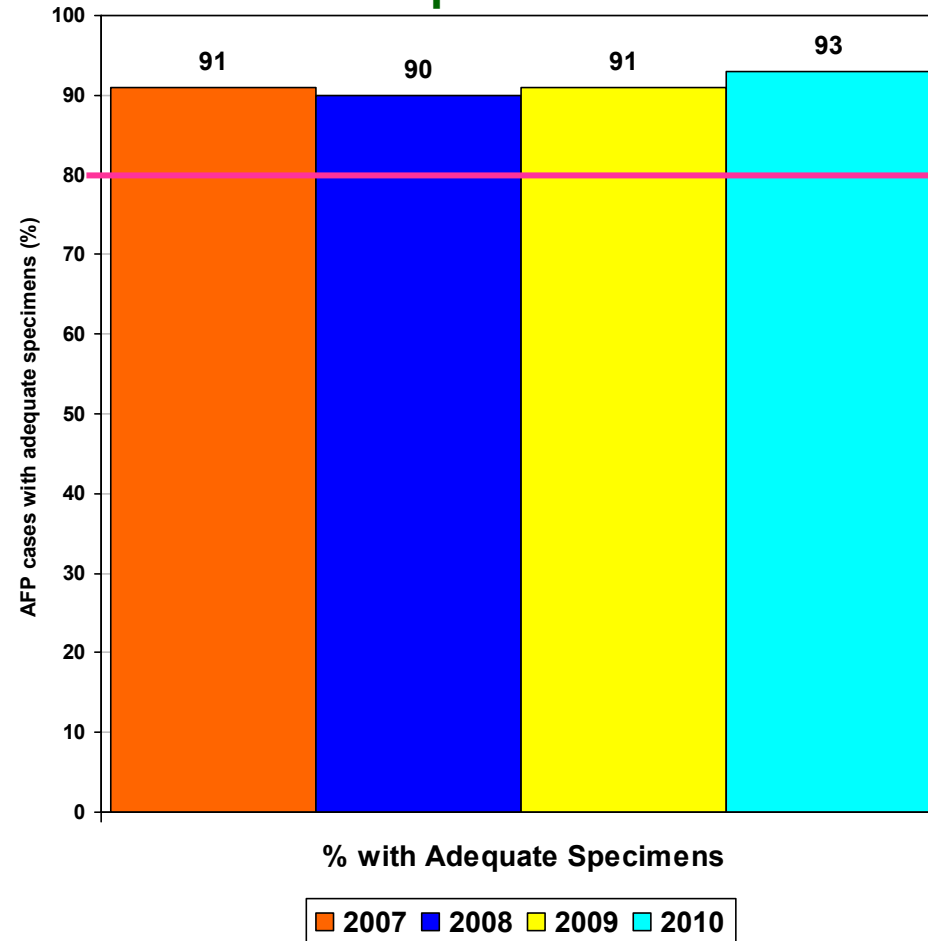
\* Afp.rec Data as of 13-03-2010

# Key Surveillance Indicators 2007-2010\*

## Graph 4



## Graph 5

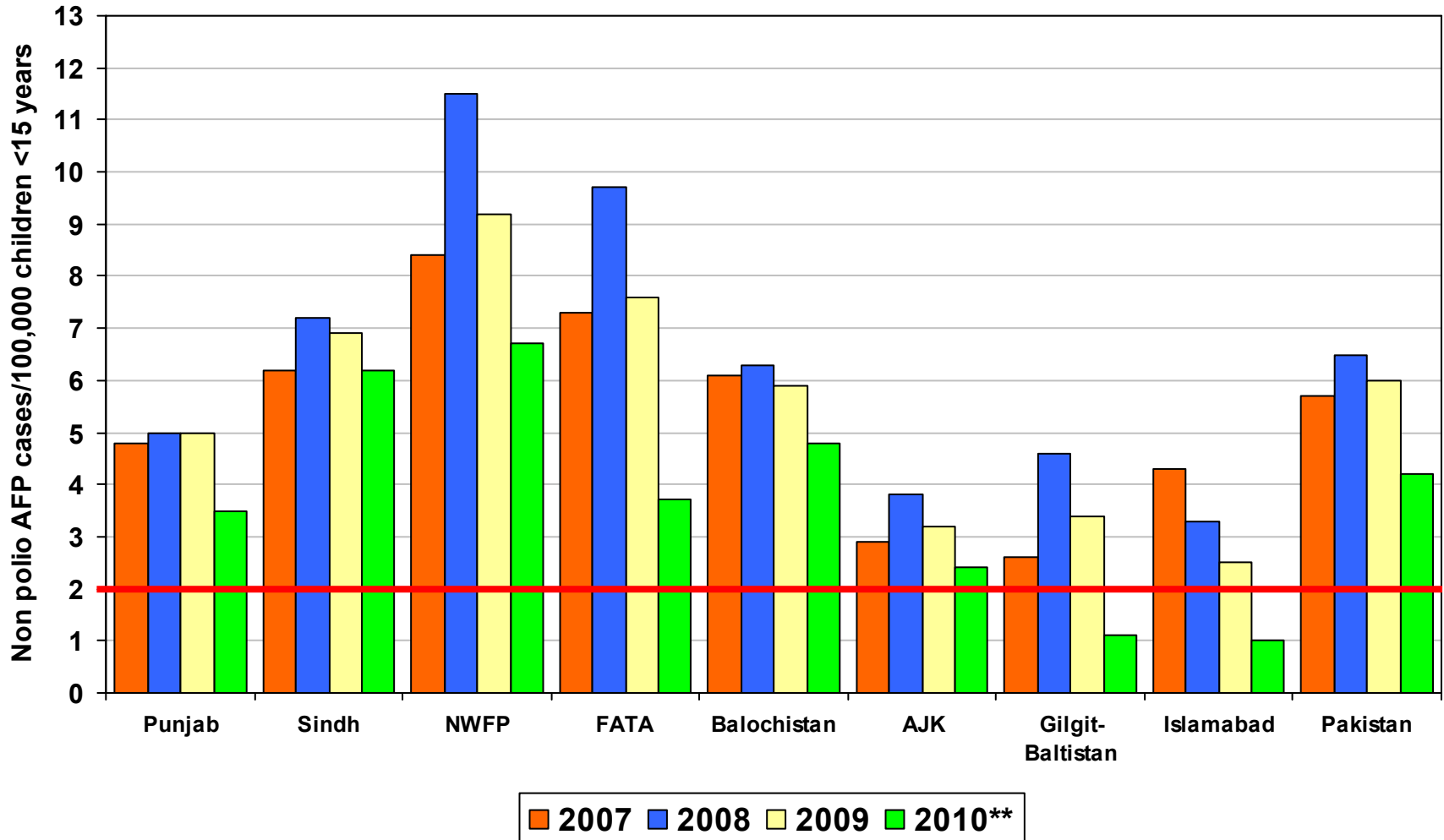


Non Polio Up to Week No. 9 ended on 06<sup>th</sup> March 2010

\* Afp.rec Data as of 13-03-2010

\*\* 2010 data is based on 2009 population

# Graph 4.1 :Non Polio AFP Rate By Province, 2007-2010\*



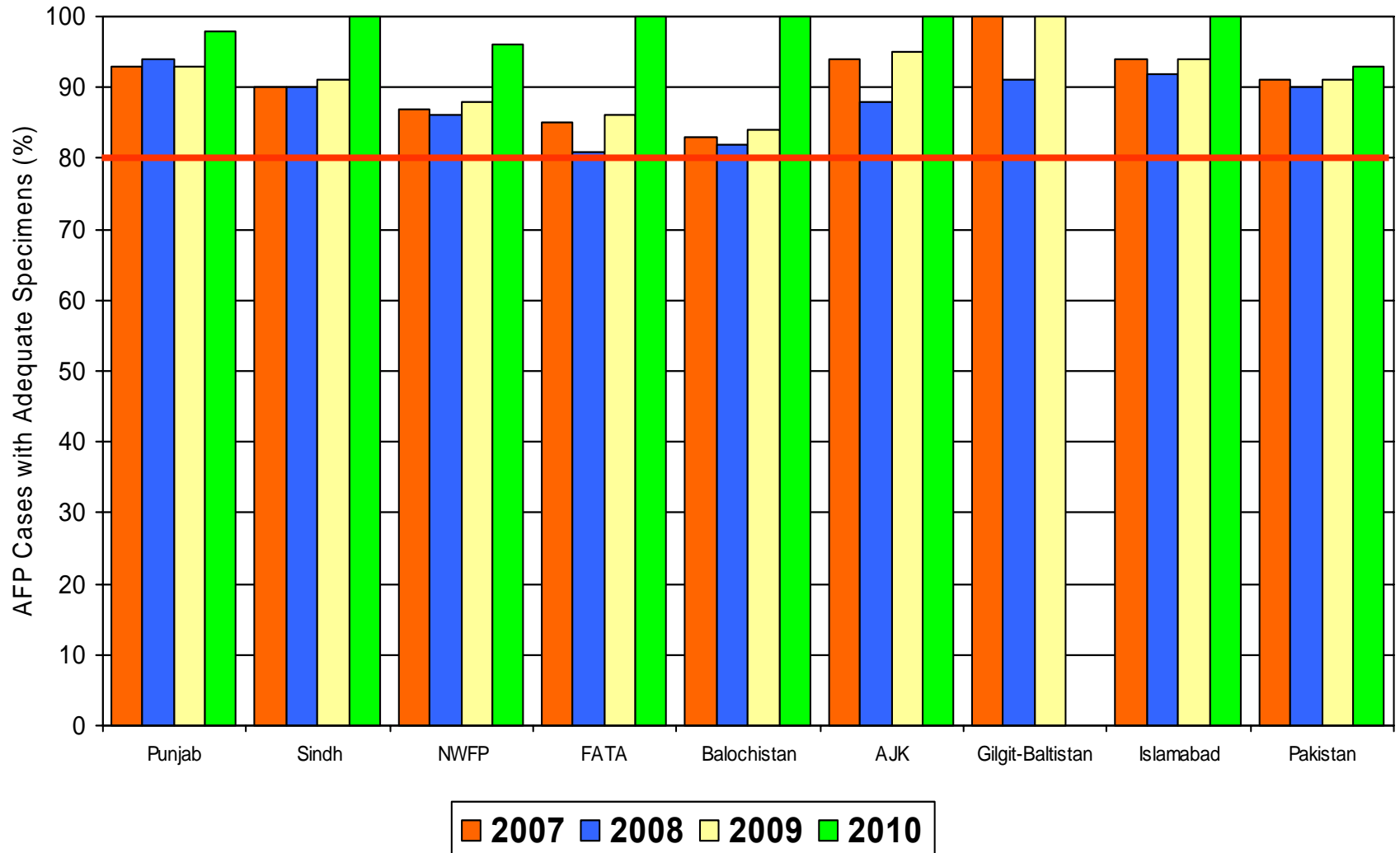
Non Polio Up to Week No. 9 ended on 06<sup>th</sup> March 2010

Target Non-Polio AFP Rate 2/ 100000

\* Afp.rec Data as of 13-03-2010

\*\* 2010 data is based on 2009 population

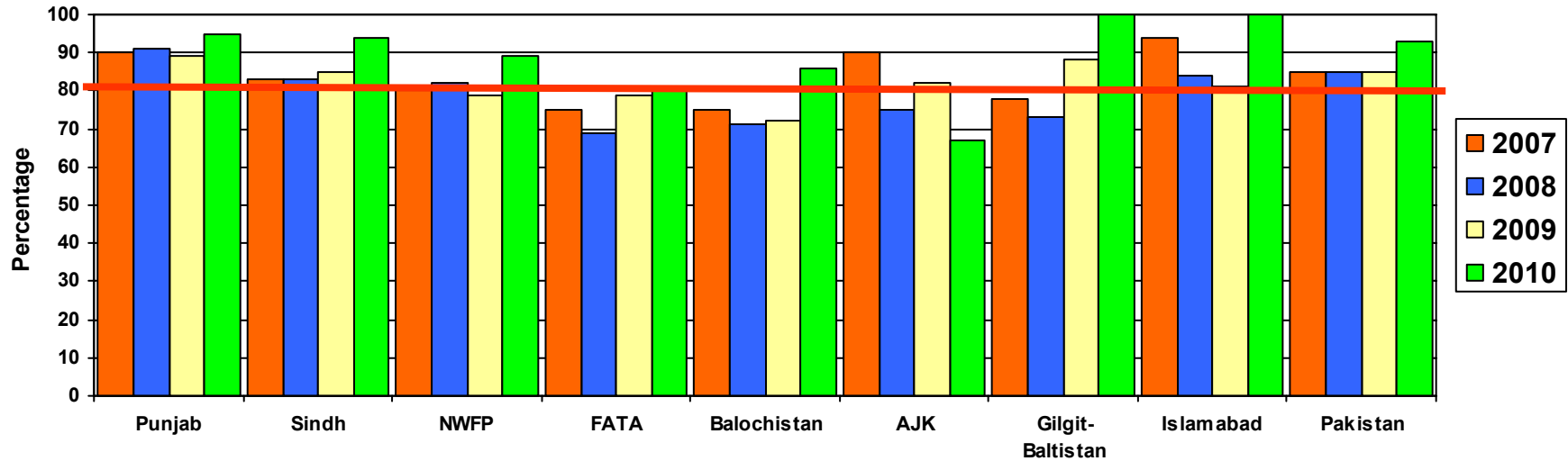
# Graph 5.1: Percent AFP Cases with Adequate Specimens By Province, 2007-2010\*



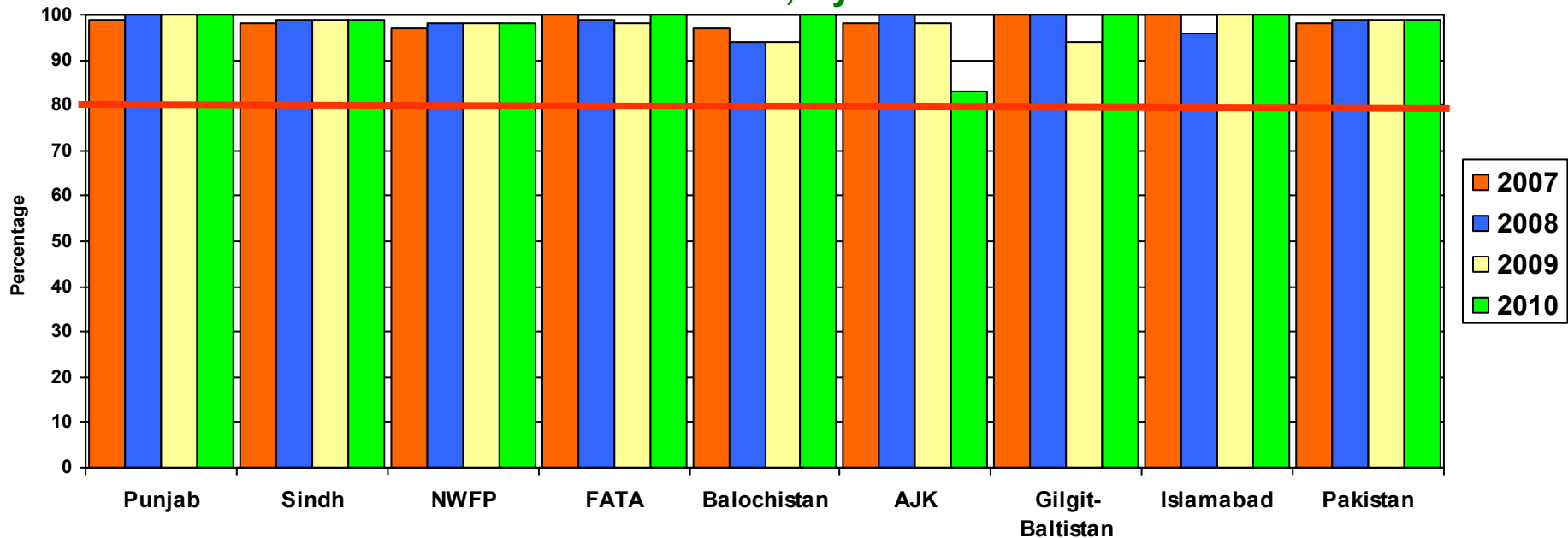
\* Afp.rec Data as of 13-03-2010

**Target Adequate Sample cases = 80%**

**Graph 6: Percent AFP Cases Notified within 07 days of paralysis onset  
2007 ~ 2010\*, By Province**



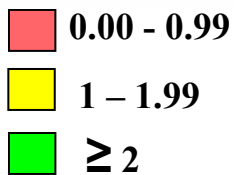
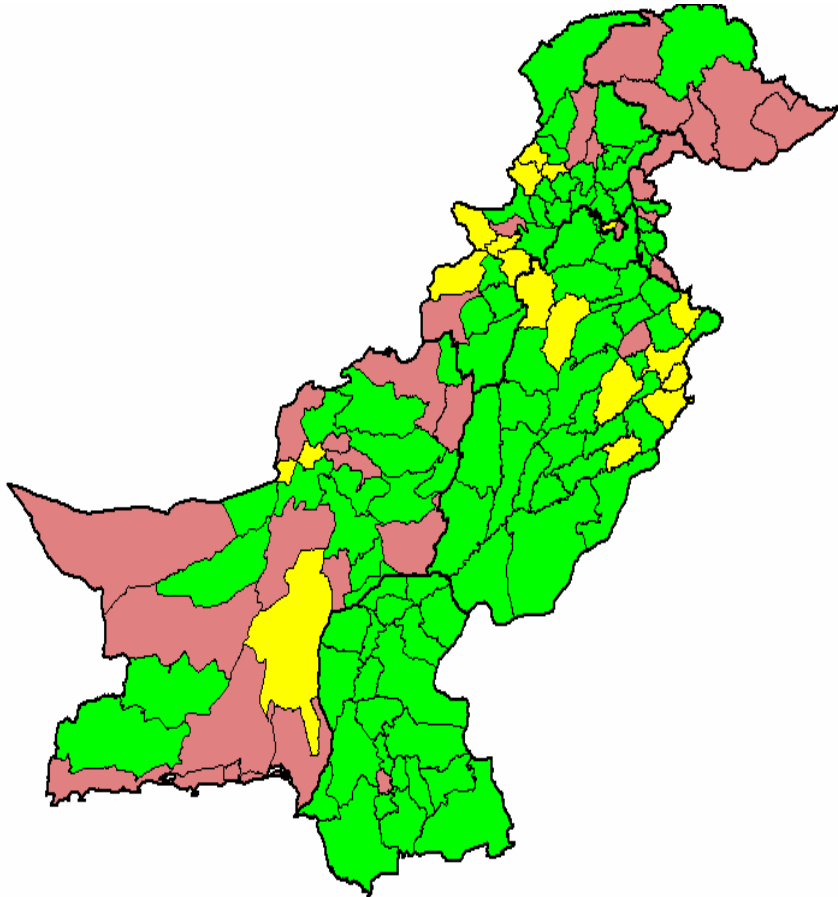
**Graph 7: Percent AFP Cases Investigated within 48 hours of notification  
2007 ~ 2010\*, By Province**



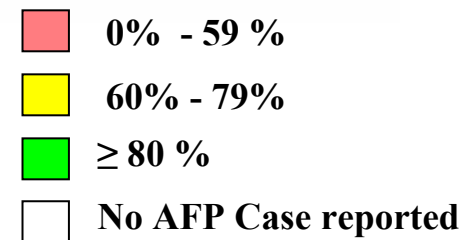
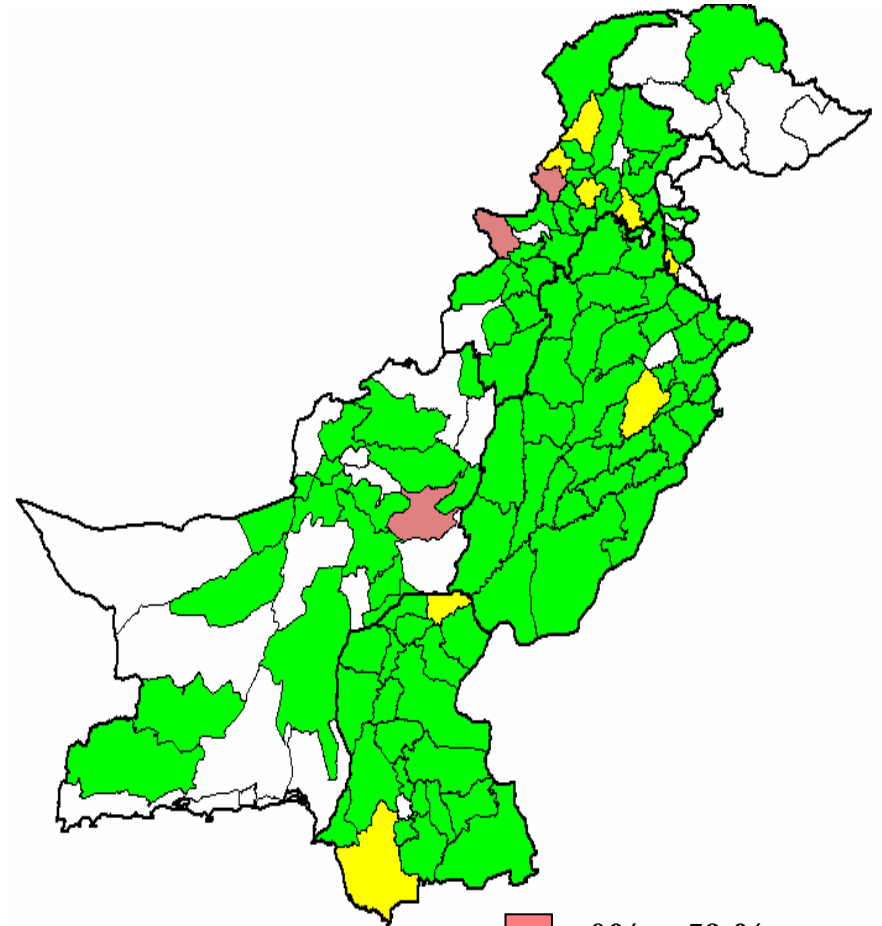
\* Afp.rec Data as of 13-03-2010

— Target Investigated within 48 hours = 80%

**Map 4: *Non-Polio AFP Rate by District 2010\****



**Map 5: *Percent AFP Cases with Adequate Specimens, By District – 2010\****



\* Afp.rec Data as of 13-03-2010

**Table 8: AFP CASES PENDING FOR CLASSIFICATION WITH DATE OF ONSET MORE THAN 90 DAYS\***

S. No	DISTRICT	TEHSIL	EPID	SEX	AGE	DONSET	D O S E S€	DSTOOL1	DSTOOL2	LAB	FEVER	ASYM	PRO G	FU P	PEND (DAYS)
1	KOHLU	MAWAND	BN/34/09/004	M	120	05-Nov-09	0	30-Dec-09	31-Dec-09	NVI	Y	N	Y	Y	120

€ Based on recall of parents

FUP = Residual Weakness at 60 days follow up,

\* Afp.rec Data as of 13-03-2010