



**World Health  
Organization**

**Weekly  
AFP Surveillance Update  
Pakistan**

**Week 08** (*Ended on 26<sup>th</sup> February , 2010*)

AFP Surveillance



***National Surveillance Cell  
Federal EPI***

World Health Organization Country Office,  
Chak Shahzad, Park Road,  
Islamabad, Pakistan

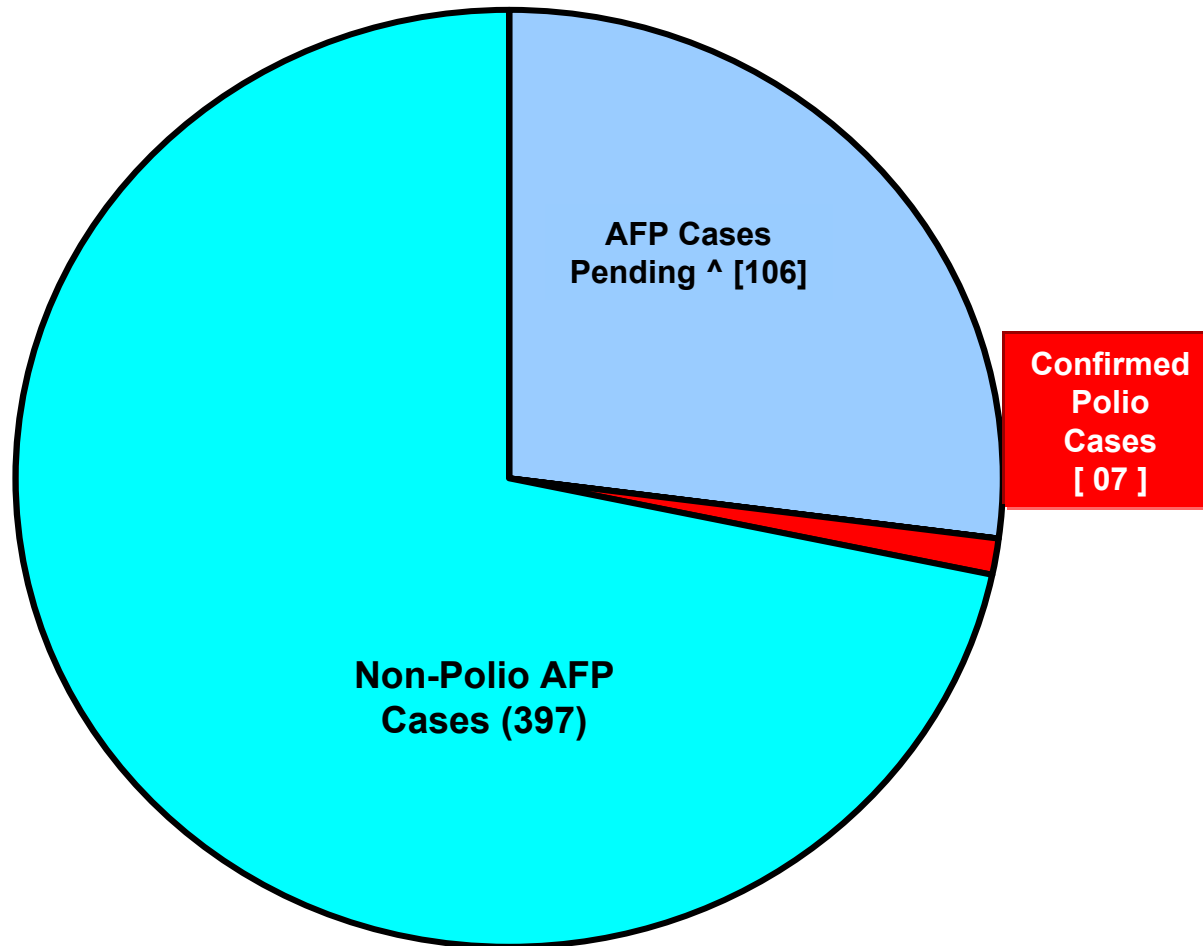
Tel: +92-51 9255123 / 9255282 /9255184

Fax: +92-51 9255192

Email: [epidata@pak.emro.who.int](mailto:epidata@pak.emro.who.int)

Web site: [www.who.org/polioeradication](http://www.who.org/polioeradication)

## AFP Case Profile 2010\*



**Total AFP Cases Reported in 2010 = 510**

**^8 Inadequate cases pending ERC;  
20 Inadequate cases pending FUP  
78 Pending Lab**

*Note: 36 AFP cases of 2009 are pending for classification (25 for ERC and 11 for 60-day follow up)*

\* Afp.rec Data as of 26-02-2010

# Table 1: List of Confirmed Polio Cases, Pakistan 2009\* 1/5

S. NO.	PROVINCE	DISTRICT	EPID NO.	SEX	AGE (m)	DATE ONSET OF PARALYSIS	NO. OPV DOSES €		FEVER	Asymmetric Paralysis	Rapid Progression	REFUSAL	FUP	WPV TYPE	GENETICS	
							Routine <sup>e</sup>	SIAs							Cluster <sup>f</sup>	Sub-Cluster <sup>f</sup>
1	PUNJAB	SIALKOT	PB/25/09/001	F	25	11/01/2009	1	7+	Yes	Yes	Yes	No	Y	NSL3	B1	C-7
2	NWFP	CHARSADA <sup>^^</sup>	NW/31/09/002	M	30	11/01/2009	1	7+	Yes	Yes	Yes	No	Y	NSL3	B1	C-7
3	FATA	MOHMAND <sup>¥</sup>	NW/35/09/001	M	12	12/01/2009	0	1	Yes	Yes	Yes	No	N	NSL1	A3	D-2
4	NWFP	CHARSADA <sup>^^</sup>	NW/31/09/005	M	32	19/01/2009	1	7+	Yes	Yes	Yes	No	Y	NSL3	B1	C-7
5	SINDH	KHI GADAP	SD/63/09/003	M	16	27/01/2009	0	4	Yes	No	Yes	No	Lost	NSL1	A3	A-1A
6	PUNJAB	TT SINGH	PB/52/09/006	M	60	31/01/2009	3	7+	Yes	No	Yes	No	Y	NSL1	B4	A-1
7	FATA	BAJOUR <sup>¥</sup>	NW/33/09/002	F	12	29/01/2009	0	3	Yes	Yes	Yes	No	Y	NSL1	B4	A-1
8	SINDH	KHI BALDIA <sup>^^</sup>	SD/61/09/003	M	24	11/02/2009	0	4	Yes	Yes	Yes	No	Y	NSL3	B1	C-5
9	SINDH	KHI BALDIA	SD/61/09/006	F	18	25/02/2009	0	7+	Yes	Yes	Yes	No	Y	NSL3	B1	C-5
10	FATA	MOHMAND <sup>¥^^</sup>	NW/35/09/007	F	24	12/04/2009	0	6	Yes	Yes	Yes	No	Y	NSL1	B4	A-1
11	SINDH	KAMBAR	SD/55/09/009	M	21	10/04/2009	1	7+	Yes	Yes	Yes	No	Y	NSL3	B1	C-5
12	PUNJAB	MULTAN	PB/61/09/037	M	10	21/04/2009	3	7	Yes	Yes	Yes	No	Y	NSL1	A3	D-2
13	PUNJAB	MULTAN	PB/61/09/043	M	8	27/04/2009	3	5	Yes	Yes	Yes	No	Y	NSL1	A3	D-2
14	BALUCHISTAN	KABDULAH	BN/14/09/006	M	17	03/05/2009	0	2	Yes	Yes	Yes	No	Y	NSL1	A3	A-1A
15	FATA	BAJOUR <sup>¥</sup>	NW/33/09/017	F	8	06/05/2009	0	0	Yes	Yes	Yes	No	Y	NSL3	B1	C-6B
16	NWFP	KOHISTAN <sup>§^^</sup>	NW/13/09/001	F	54	23/04/2009	0	7+	No	No	Yes	No	Y	NSL1	B4	A-1
17	SINDH	KHI G IQBAL	SD/65/09/011	F	30	28/04/2009	3	7+	No	No	Yes	No	Died	NSL1	A3	A-1A
18	PUNJAB	MULTAN	PB/61/09/055	F	11	26/05/2009	3	7+	No	Yes	Yes	No	Y	NSL1	B4	A-1
19	SINDH	T. ALLAH YAR	SD/27/09/011	M	18	28/05/2009	3	7	Yes	Yes	Yes	No	Y	NSL1	A3	A-1A
20	PUNJAB	RAJANPUR	PB/82/09/031	M	8	01/06/2009	1	4	No	Yes	Yes	No	Y	NSL1	A3	D-2

<sup>^^</sup> Afghan Refugees

<sup>^^</sup> Nomad

<sup>§</sup> Contact had WPV

<sup>€</sup> Based on recall of parents

<sup>¥</sup> From areas having insecurity for long period.

\* Afp.rec Data as of 26-02-2010

FUP = Residual Weakness at 60days FUP

# Table 1.1: List of Confirmed Polio Cases, Pakistan 2009\* 2/5

S.NO	PROVINCE	DISTRICT	EPID NO.	SEX	AGE (m)	DATE ONSET OF PARALYSIS	NO. OPV DOSES €		FEVER	Asymmetric Paralysis	Rapid Progression	REFUSAL	FUP	WPV TYPE	GENETICS	
							Routine	SIA's							Cluster	Sub-Cluster
21	PUNJAB	BAHAWALPUR	PB/71/09/024	F	30	13/06/2009	3	7+	No	No	Yes	No	Y	NSL1	A3	A-1A
22	FATA	BAJOUR*	NW/33/09/026	M	23	01/07/2009	0	2	Yes	Yes	Yes	No	Y	NSL3	B1	C-6B
23	BALUCHISTAN	SHERANI	BN/26/09/002	M	3	04/07/2009	0	0	Yes	Yes	Yes	Yes	Y	NSL1	A3	A-1A
24	FATA	BAJOUR	NW/33/09/025	M	16	03/07/2009	0	7	Yes	Yes	Yes	No	Y	NSL1	B4	A-1
25	NWFP	DIR UPPER	NW/25/09/014	M	18	28/06/2009	0	2	Yes	Yes	Yes	No	Y	NSL3	B1	C-7
26	BALUCHISTAN	PISHIN	BN/12/09/007	M	6	13/07/2009	0	0	Yes	Yes	Yes	Yes	Y	NSL1	A3	A-1A
27	PUNJAB	LAHORE	PB/31/09/064	F	18	23/07/2009	0	0	Yes	Yes	Yes	No	Y	NSL1	B4	A-1
28	FATA	BAJOUR *	NW/33/09/031	F	9	08/07/2009	0	0	Yes	Yes	Yes	No	Y	NSL3	B1	C-5
29	FATA	BAJOUR *	NW/33/09/034	F	24	20/07/2009	0	0	Yes	Yes	Yes	No	Y	NSL3	B1	C-6B
30	FATA	BAJOUR	NW/33/09/035	F	14	22/07/2009	0	0	Yes	Yes	Yes	No	Y	NSL3	B1	C-5
31	FATA	BAJOUR	NW/33/09/036	F	26	17/07/2009	0	0	Yes	Yes	Yes	No	Y	NSL3	B1	C-5
32	SINDH	NOSHERO FERAZ	SD/45/09/024	M	54	28/07/2009	0	7+	Yes	Yes	Yes	No	Y	NSL1	A3	A-1A
33	NWFP	SWAT *	NW/24/09/014	F	10	25/07/2009	0	0	Yes	Yes	Yes	No	Y	NSL1	A3	A-2
34	FATA	BAJOUR *	NW/33/09/032	F	18	14/07/2009	0	2	Yes	Yes	Yes	No	Y	NSL3	B1	C-7
35	SINDH	SANGHAR	SD/32/09/034	M	11	20/07/2009	3	5	Yes	Yes	Yes	No	Y	NSL1	A3	A-2
36	SINDH	SHIKARPUR	SD/52/09/040	F	12	02/08/2009	3	4	Yes	Yes	Yes	No	Y	NSL1	A3	A-1A
37	NWFP	SWAT *	NW/24/09/020	F	11	03/08/2009	1	0	Yes	No	Yes	No	Y	NSL1	A3	A-1A
38	NWFP	SWAT *	NW/24/09/019	F	12	01/08/2009	0	0	Yes	No	Yes	No	Y	NSL1	A3	A-1A
39	FATA	BAJOUR *	NW/33/09/042	M	20	08/08/2009	0	4	Yes	Yes	Yes	No	Y	NSL3	B1	C-7
40	FATA	BAJOUR	NW/33/09/039	F	5	29/07/2009	0	0	Yes	Yes	UK	No	Y	NSL1+ NSL3	B4 B1	A-1 C-6B

¥ From areas having insecurity for long period.

€ Based on recall of parents

\* Afp.rec Data as of 26-02-2010

FUP = Residual Weakness at 60days FUP

UK =UNKNOWN

**Table 1.2: List of Confirmed Polio Cases, Pakistan 2009\*** 3/5

S.NO	PROVINCE	DISTRICT	EPID NO.	SEX	AGE (m)	DATE ONSET OF PARALYSIS	NO. OPV DOSES €		FEVER	Asymmetric Paralysis	Rapid Progression	REFUSAL	FUP	WPV TYPE	GENETICS	
							Routine	SIA's							Cluster	Sub-Cluster
41	NWFP	SWAT ‡	NW/24/09/021	M	9	04/08/2009	0	0	Yes	No	No	No	Y	NSL1	A3	A-1A
42	FATA	BAJOUR	NW/33/09/041	F	24	03/08/2009	0	0	Yes	No	Yes	No	Y	NSL3	B1	C-6B
43	NWFP	SHANGLA ‡	NW/26/09/008	M	12	13/08/2009	0	0	Yes	Yes	Yes	No	Y	NSL1	A3	A-1A
44	SINDH	T.ALLAHYAR	SD/27/09/022	M	8	14/08/2009	0	0	Yes	Yes	Yes	No	Y	NSL1	A3	A-1A
45	BALUCHISTAN	KABDULAH	BN/14/09/010	M	32	13/08/2009	0	7+	Yes	UK	Yes	No	Y	NSL3	B1	C-5
46	BALUCHISTAN	SHERANI ^^	BN/26/09/003	F	14	20/08/2009	0	3	Yes	No	Yes	No	Lost	NSL1	A3	A-1A
47	NWFP	SWAT‡	NW/24/09/029	M	12	22/08/2009	0	0	Yes	Yes	No	No	Y	NSL1	A3	A-1A
48	FATA	WAZIR-N ‡	NW/64/09/015	M	11	23/08/2009	0	0	Yes	No	Yes	No	Y	NSL1	A3	A-1A
49	FATA	MOHMAND	NW/35/09/017	M	14	24/08/2009	0	1	Yes	Yes	Yes	No	Y	NSL3	B1	C-5
50	NWFP	SWAT ‡	NW/24/09/030	F	9	17/08/2009	0	0	Yes	Yes	No	No	Y	NSL1	A3	A-1A
51	NWFP	SWAT ‡	NW/24/09/031	M	24	17/08/2009	3	7+	Yes	Yes	No	No	Y	NSL1	A3	A-1A
52	NWFP	SWAT ‡	NW/24/09/034	M	24	02/09/2009	0	0	UK	Yes	Yes	No	Y	NSL1	A3	A-1A
53	NWFP	SWAT ‡	NW/24/09/033	F	10	30/08/2009	0	0	Yes	No	No	No	Y	NSL1	A3	A1A
54	NWFP	SWAT ‡	NW/24/09/041	F	18	29/08/2009	0	0	Yes	No	No	No	Y	NSL1	A3	A-1A
55	NWFP	SWAT ‡	NW/24/09/042	M	12	07/09/2009	0	0	Yes	Yes	No	No	Y	NSL1	A3	A-1A
56	FATA	BAJOUR	NW/33/09/048	M	18	01/09/2009	0	7+	Yes	Yes	Yes	No	Y	NSL1	A3	D-2
57	NWFP	CHARSADA ‡	NW/31/09/047	F	46	09/09/2009	3	7+	Yes	Yes	Yes	No	Y	NSL3	B1	C-5
58	PUNJAB	MULTAN	PB/61/09/081	M	15	27/08/2009	3	7+	No	Yes	Yes	No	Y	NSL1	A3	D-2
59	NWFP	SWAT‡	NW/24/09/038	F	24	05/09/2009	0	2	Yes	No	Yes	No	Y	NSL1	A3	A1A
60	NWFP	SWAT‡	NW/24/09/044	F	10	11/09/2009	0	1	Yes	No	Yes	No		NSL1	A3	A-1A

‡ From areas having insecurity for long period.

€ Based on recall of parents

\* Afp.rec Data as of 26-02-2010

^^ Nomad

FUP = Residual Weakness at 60days FUP

UK =UNKNOWN

# Table 1.3: List of Confirmed Polio Cases, Pakistan 2009\* 4/5

S.NO	PROVINCE	DISTRICT	EPID NO.	SEX	AGE (m)	DATE ONSET OF PARALYSIS	NO. OPV DOSES €		FEVER	Asymmetric Paralysis	Rapid Progression	REFUSAL	FUP	WPV TYPE	GENETICS	
							Routine	SIA's							Cluster	Sub-Cluster
61	SINDH	KHIGADAP <sup>^^</sup> §	SD/63/09/022	M	2	24/08/2009	0	2	No	Yes	Yes	No	N	NSL3	B1	C-5
62	BALUCHISTAN	QUETTA <sup>^^</sup>	BN/11/09/018	M	5	14/09/2009	0	3	Yes	Yes	Yes	No	Y	NSL3	B1	C-5
63	PUNJAB	KHANEWAL	PB/62/09/070	M	17	2/10/2009	3	7+	Yes	Yes	Yes	No	Y	NSL1	A3	D-2
64	PUNJAB	MUZAFARGARH	PB/83/09/090	M	72	4/10/2009	0	7+	No	No	Yes	No	Died	NSL1	A3	D-2
65	NWFP	SWAT ¥	NW/24/09/064	M	24	9/10/2009	0	0	Yes	Yes	Yes	No	Y	NSL1	A3	A-1A
66	BALUCHISTAN	K ABDULLAH	BN/14/09/011	M	13	7/10/2009	0	3	Yes	Yes	Yes	No	Died	NSL3	B1	C-5
67	NWFP	DIR UPPER	NW/25/09/017	M	25	26/09/2009	0	0	Yes	No	No	No	Y	NSL3	B1	C-7
68	NWFP	SWAT ¥	NW/24/09/061	M	12	2/10/2009	0	2	Yes	No	No	No	Y	NSL1	A3	A-1A
69	NWFP	SWAT ¥	NW/24/09/062	F	18	28/09/2009	0	0	Yes	No	No	No	Y	NSL1	A3	A-1A
70	NWFP	SWAT ¥	NW/24/09/058	M	24	29/09/2009	0	0	Yes	Yes	Yes	No	Y	NSL1	A3	A-1A
71	NWFP	SWAT ¥	NW/24/09/063	M	18	9/10/2009	0	0	Yes	No	Yes	No	Y	NSL1	A3	A-1A
72	PUNJAB	MULTAN	PB/61/09/086	F	9	27/09/2009	2	7	Yes	No	Yes	No	Y	NSL1	A3	D-2
73	NWFP	SWAT ¥	NW/24/09/066	M	46	17/10/2009	3	7+	Yes	No	Yes	No	Y	NSL1	A3	A-1A
74	PUNJAB	RAWALPINDI	PB/11/09/063	F	15	03/10/2009	3	7	Yes	Yes	Yes	No	Y	NSL1	A3	D-2
75	PUNJAB	DGKHAN	PB/81/09/085	M	156	05/10/2009	3	UK	Yes	Yes	Yes	No	Y	NSL1	A3	A-1A
76	FATA	BAJOUR¥	NW/33/09/057	F	12	18/10/2009	0	0	Yes	Yes	Yes	No		NSL1	B4	A-1
77	NWFP	SWAT¥	NW/24/09/069	F	9	25/10/2009	0	1	Yes	No	No	No	Y	NSL1	A3	A-1A
78	PUNJAB	MUZAFARGARH	PB/83/09/091	M	5	04/10/2009	0	4	Yes	No	Yes	No	Y	NSL1	A3	D-2
79	BALUCHISTAN	KILLA ABDULLAH	BN/14/09/012	F	12	05/11/2009	0	0	Yes	Yes	Yes	Yes	Died	NSL1	A3	A-1A
80	BALUCHISTAN	KILLA ABDULLAH	BN/14/09/013	F	26	05/11/2009	0	7+	Yes	UK	Yes	No	N	NSL3	B1	C-5

<sup>^^</sup> Afghan Refugees

¥ From areas having insecurity for long period.

§ Contact had WPV

€ Based on recall of parents

FUP = Residual Weakness at 60days FUP

UK =UNKNOWN

\* Afp.rec Data as of 26-02-2010

## Table 1.4: List of Confirmed Polio Cases, Pakistan 2009\*

S.NO	PROVINCE	DISTRICT	EPID NO.	SEX	AGE (m)	DATE ONSET OF PARALYSIS	NO. OPV DOSES €		FEVER	Asymmetric Paralysis	Rapid Progression	REFUSAL	FUP	WPV TYPE	GENETICS	
							Routine	SIA's							Cluster	Sub-Cluster
81	NWFP	DI KHAN <sup>^</sup>	NW/60/09/021	F	24	07/11/2009	0	0	Yes	Yes	Yes	No	Y	NSL1	A3	A1-A
82	PUNJAB	MUZAFFARGRAH	PB/83/09/101	M	7	03/11/2009	0	6	No	Yes	Yes	No	Y	NSL1	A3	D-2
83	SINDH	JACOBABAD	SD/53/09/0800	F	8	16/11/2009	0	0	Yes	Yes	Yes	No	Y	NSL3	B1	C-5
84	PUNJAB	MUZAFFARGRAH	PB/83/09/107	M	18	21/11/2009	0	7+	No	No	Yes	No	Y	NSL1	A3	D-2
85	BALUCHISTAN	QUETTA	BN/11/09/028	M	11	26/11/2009	0	7+	Yes	Yes	Yes	No	Y	NSL3	B1	C-5
86	FATA	BAJOUR <sup>¥</sup>	NW/33/09/066	F	12	06/12/2009	0	0	Yes	No	No	No		NSL1	B4	A-1
87	FATA	MOHMAND	NW/35/09/021	M	11	25/12/2009	0	1	Yes	Yes	Yes	No	Y	NSL3	B1	C6-B
88	BALUCHISTAN	JAFFARABAD	BN/43/09/031	M	84	31/12/2009	1	7+	Yes	Yes	Yes	No	^	NSL3	B1	C-5
89	NWFP	BANNU <sup>§</sup>	NW/61/09/025	M	12	05/12/2009	0	2	Yes	Yes	Yes	Yes	Y	NSL1	A3	A1-A

<sup>^</sup> Nomad

<sup>¥</sup> From areas having insecurity for long period.

<sup>§</sup> Contact had WPV

<sup>€</sup> Based on recall of parents

\* Afp.rec Data as of 26-02-2010

FUP = Residual Weakness at 60days FUP  
<sup>^</sup> 60 days follow up not due

## Table 2: List of Confirmed Polio Cases, Pakistan 2010\* 1/1

S. NO.	PROVINCE	DISTRICT	EPID NO.	SEX	AGE (m)	DATE ONSET OF PARALYSIS	NO. OPV DOSES €		FEVER	Asymmetric Paralysis	Rapid Progression	REFUSAL	FUP	WPV TYPE	GENETICS	
							Routine	SIA's							Cluster	Sub-Cluster
1	FATA	BAJOUR ¥	NW/33/10/001	F	9	01/01/2010	0	0	Y	Y	Y	Y	^	NSL1	B4	A-1
2	BALUCHISTAN	QUETTA	BN/11/10/001	M	14	07/01/2010	0	7	Y	Y	Y	N	^	NSL3	B1	C-5
3	FATA	BAJOUR ¥	NW/33/10/002	M	34	12/01/2010	0	7	Y	Y	Y	N	^	NSL3	B1	C-5
4	SINDH	KHIGULSHAN	SD/65/10/002	M	18	19/01/2010	0	6	Y	N	Y	N	^	NSL3	B1	C-5
5	NWFP	PESHAWAR	NW/30/10/006	F	5	27/01/2010	1	3	Y	Y	Y	N	^	NSL1	A3	D-2
6	BALUCHISTAN	QUETTA	BN/11/10/003	F	24	30/01/2010	0	7+	Y	N	Y	N	^	NSL3	B1	C-5
7	NWFP	SWAT ¥	NW/24/10/001	M	8	05/02/2010	0	4	Y	Y	Y	N	^	NSL3	B1	C-5

New Case

€ Based on recall of parents

¥ From areas having insecurity for long period.

\* Afp.rec Data as of 26-02-2010

FUP = Residual Weakness at 60days FUP  
^ 60 days follow up not due

**Table 3: LAB Update 2010\***

Month of onset	Cases	Cases under process		Negative cases	NPEV positive	NPEV %	Within 14 days results	Positive cases	
		Culture	ITD					Wild	Vaccine
January	393	1	0	312	56	14%	100%	6	18
February	207	142	0	57	6	3%	31%	1	1
<b>TOTAL AFP</b>	<b>600</b>	<b>143</b>	<b>0</b>	<b>369</b>	<b>62</b>	<b>10%</b>	<b>76%</b>	<b>7</b>	<b>19</b>

***Specimens of 2 AFP cases having onset in 2009 are pending in the lab. Cases are late notified.***

\* LAB.rec Data as of 01/03/2010

**Table 4: Urgent Pending Cases 2009-2010\***

S.No.	DISTRICT	TEHSIL	EPID	DONSET	AGE	SEX	DOSESE€	DLOPV	Urgent by Field	¥ NSC Criteria	LAB NO.	Date of first stool collection	Date of Inoculation	Culture-update
1	QUETTA	QUETTA SADDAR	BN/11/10/004	17-Feb-10	35	F	3	Mar-08	Y	Y	719	21-Feb-10	26-Feb-10	UP
2	NFEROZ	MEHRAB PUR	SD/45/10/008	13-Feb-10	4	M	3	18-Jan-10	N	Y	627	16-Feb-10	22-Feb-10	UP

¥ Fever, Rapid Progression, Age < 48months & Doses < 7

€ Based on recall of parents

\* Data as of 01-03-2010

Urgent on both criteria

UP = Under process

**Table 5: List of samples from AFP Cases & Contacts pending for ITD\***

S. No	DISTRICT	TEHSIL	EPID	DONSET	AGE (m)	SEX	DOS ES€	DLOPV	Urgent by Field	¥ NSC Criteria	LABNO.	Date of first stool collection	rRT-PCR
1	KOHAT	KOHAT	NW/50/10/004	14/02/2010	54	M	7	UK	N	N	639	19/02/2010	UP
2	BUNAIR	SOWARI	NW/22/10/003	8/2/2010	13	M	7+	16/12/2009	N	N	659	18/02/2010	UP
3	GUJRANWALA	KHALI SHAPUR	PB/21/10/013	16/02/2010	30	F	7+	15/02/2010	N	N	644	18/02/2010	UP

UK=Uknown

UP=Under process

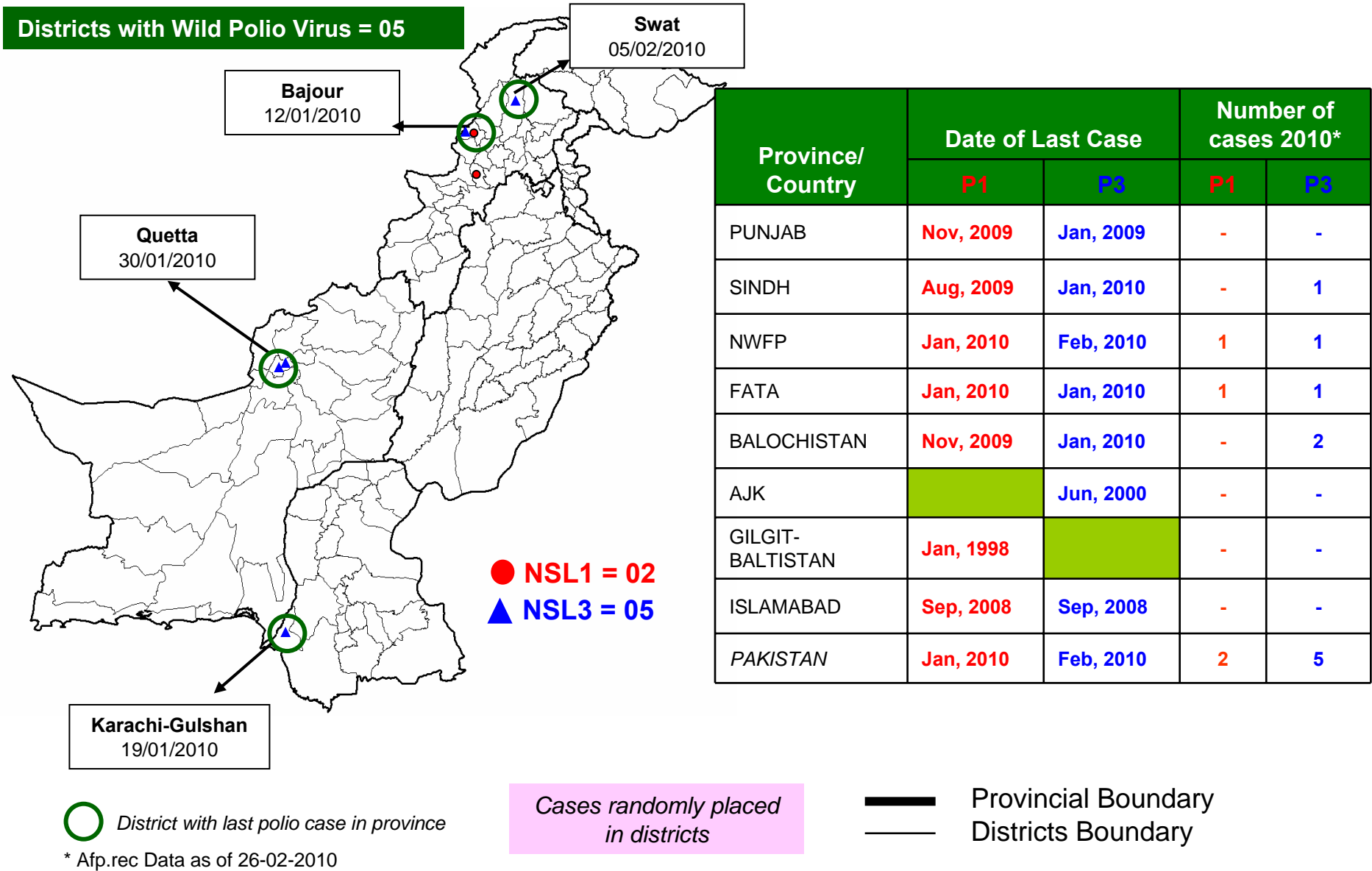
€ Based on recall of parents

¥ NSC Criteria = Fever , Rapid Progress, Age < 48 months and OPV Doses < 7

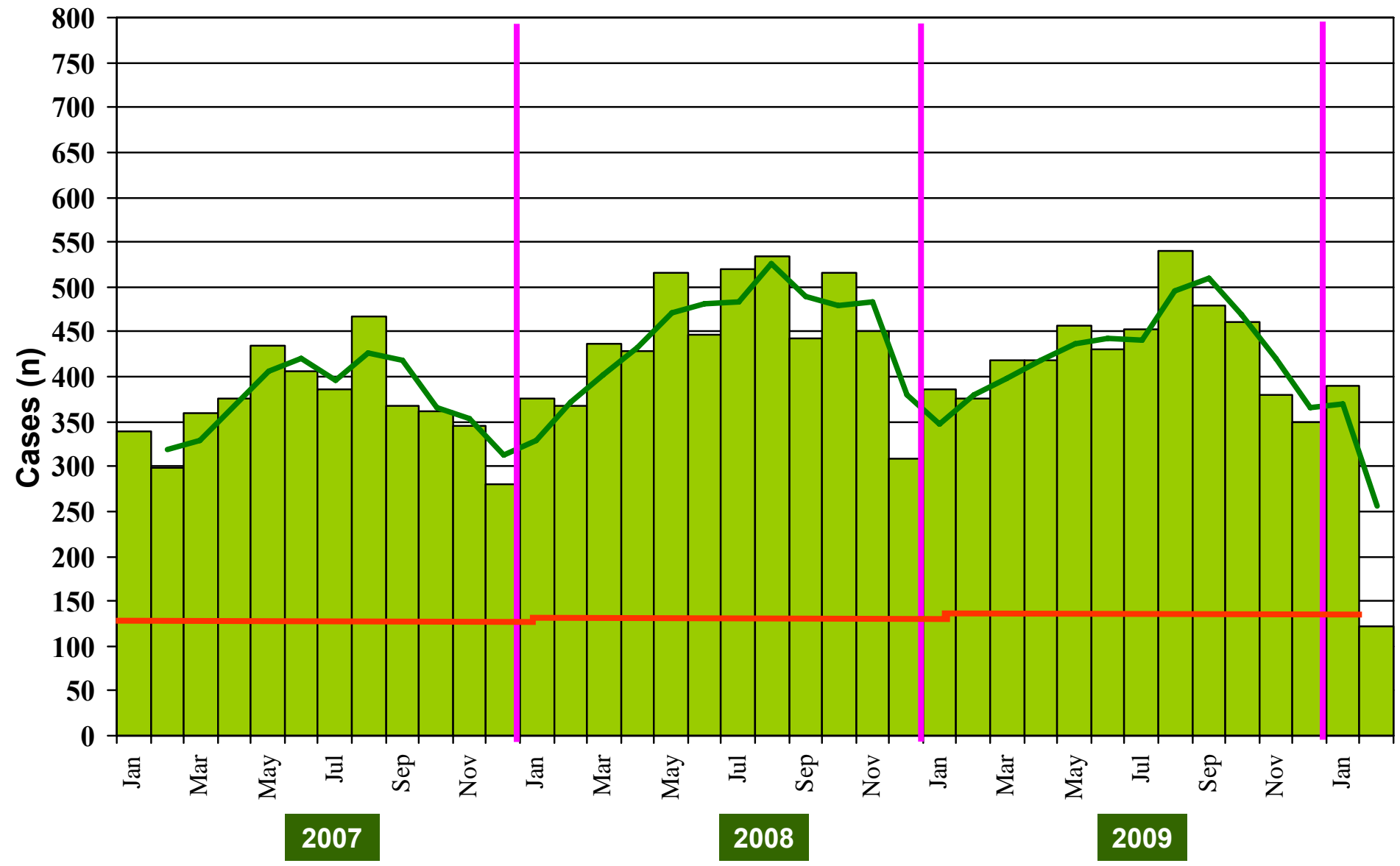
\* Data as of 01-03-2010



# Map1.1: Distribution of Wild Polio Virus cases Pakistan 2010\*



**Graph 1: Distribution of AFP Cases by Month, Pakistan 2007-2010\***



**@ Non-polio AFP rate of 2/100,000 children < 15 years**

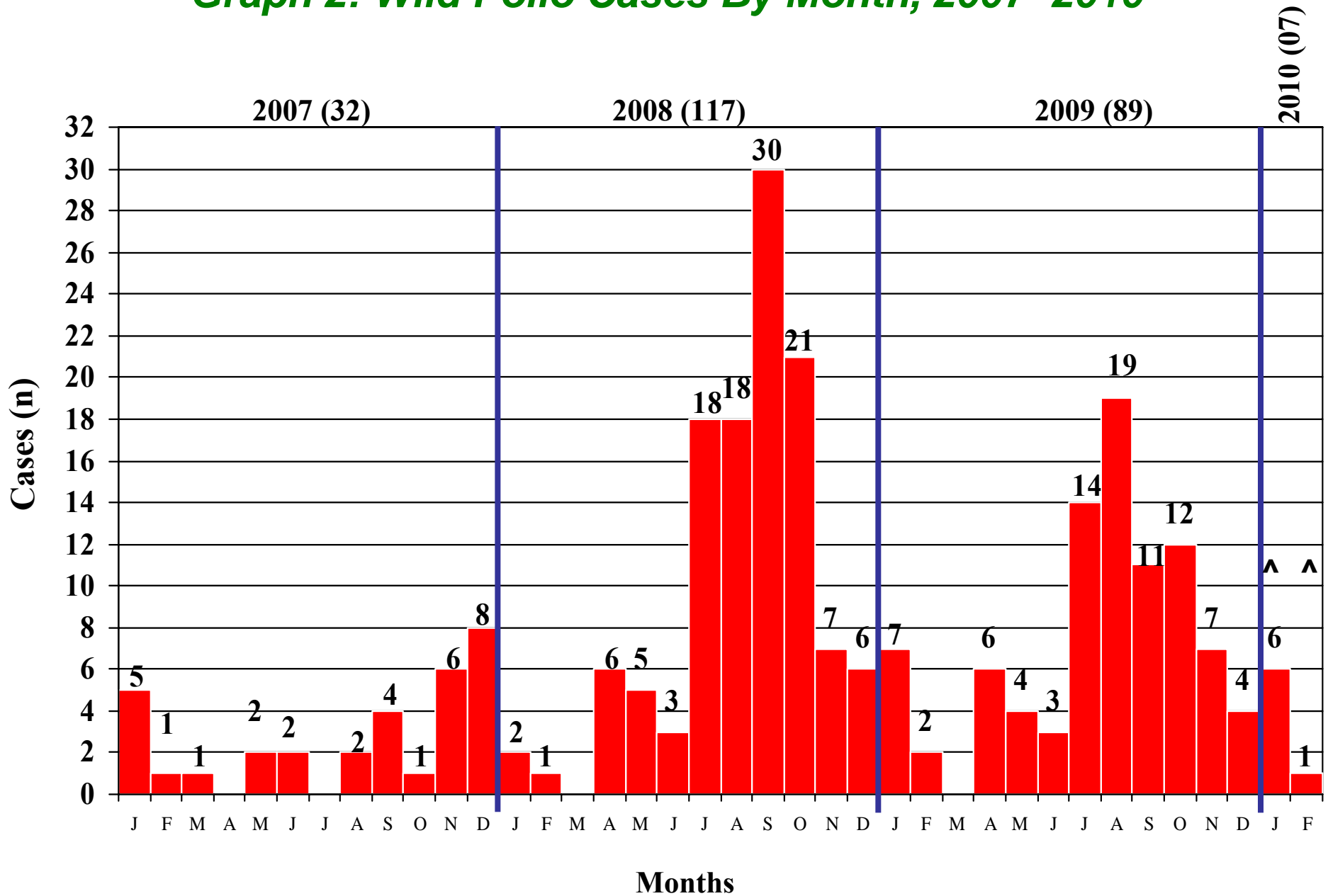
\*Afp.rec Data as of 26-02-2010

**Table 6: Distribution of AFP Cases By Week of Onset <sup>^</sup>  
Pakistan 2009/2010\* [Week number/Ending on]**

PROVINCE	W 45 14 Nov	W 46 21 Nov	W 47 28 Nov	W 48 05 Dec	W 49 12 Dec	W 50 19 Dec	W 51 26 Dec	W 52 02 Jan 2010	W 01 09 Jan	W 02 16 Jan	W 03 23 Jan	W 04 30 Jan	W 05 06 Feb	W 06 13 Feb	W 07 20 Feb	W 08 26 Feb
PUNJAB	37	43	37	28	43	30	25	46	41	42	38	31	30	34	24	0
SINDH	23	25	17	24	16	29	20	18	31	32	22	14	24	18	9	0
NWFP	26	19	10	12	20	23	11	11	22	19	22	15	14	12	10	2
FATA	2	1	0	0	2	3	2	5	0	2	2	0	0	2	0	0
BALUCHISTAN	5	5	6	4	2	4	5	5	4	5	6	4	3	5	2	0
AJK	0	0	1	2	1	0	2	2	3	2	1	0	2	0	0	0
GILGIT/ BILTISTAN	0	1	0	1	0	0	0	0	0	0	0	0	0	0	1	0
ISLAMABAD	1	0	0	0	0	0	0	1	0	0	0	0	0	0	0	0
PAKISTAN	94	94	71	71	84	89	66	88	101	102	91	64	73	71	46	2

\* Pak Lab.rec Data as of 26-02-2010

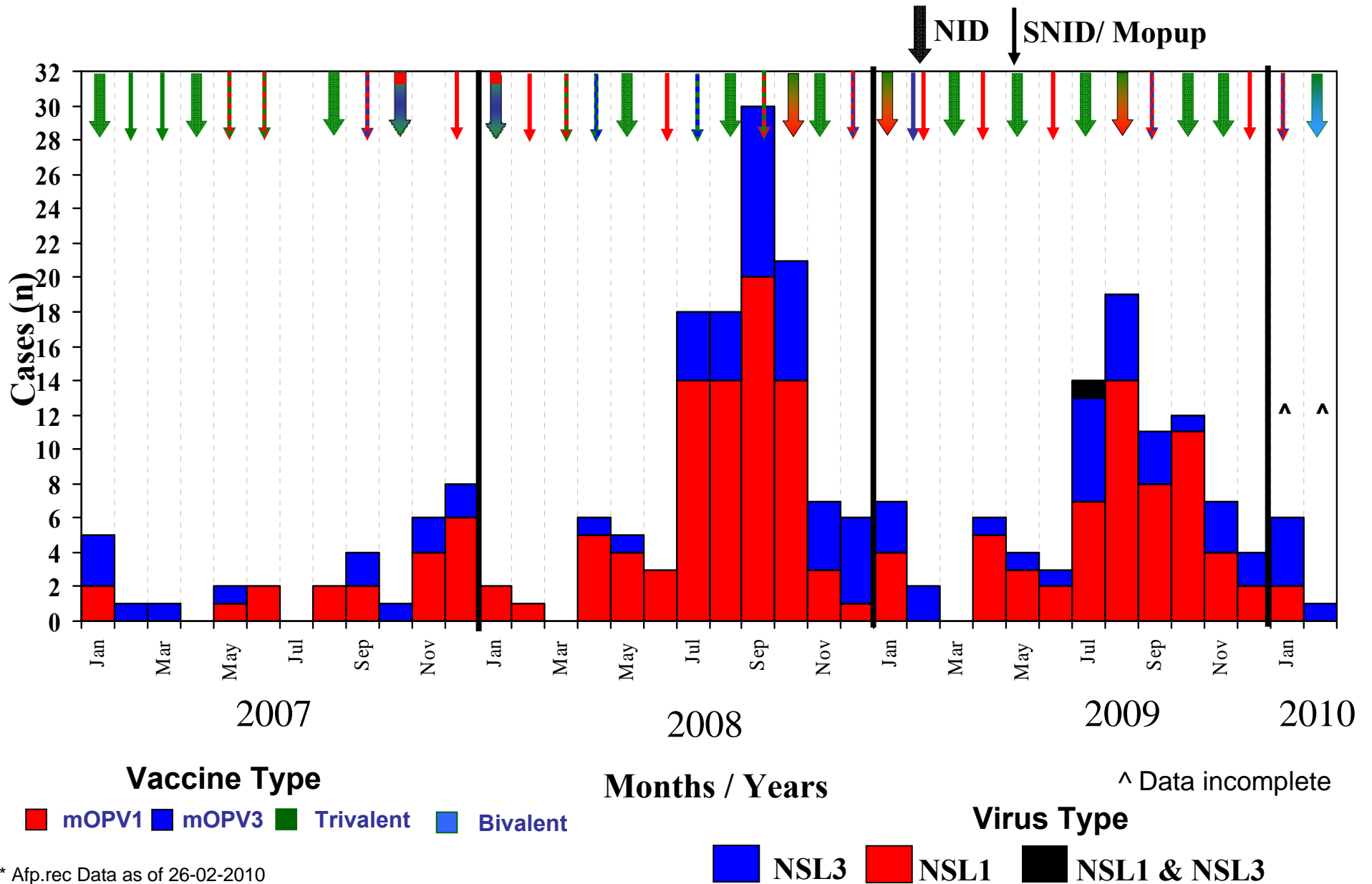
**Graph 2: Wild Polio Cases By Month, 2007- 2010\***



^ Data incomplete

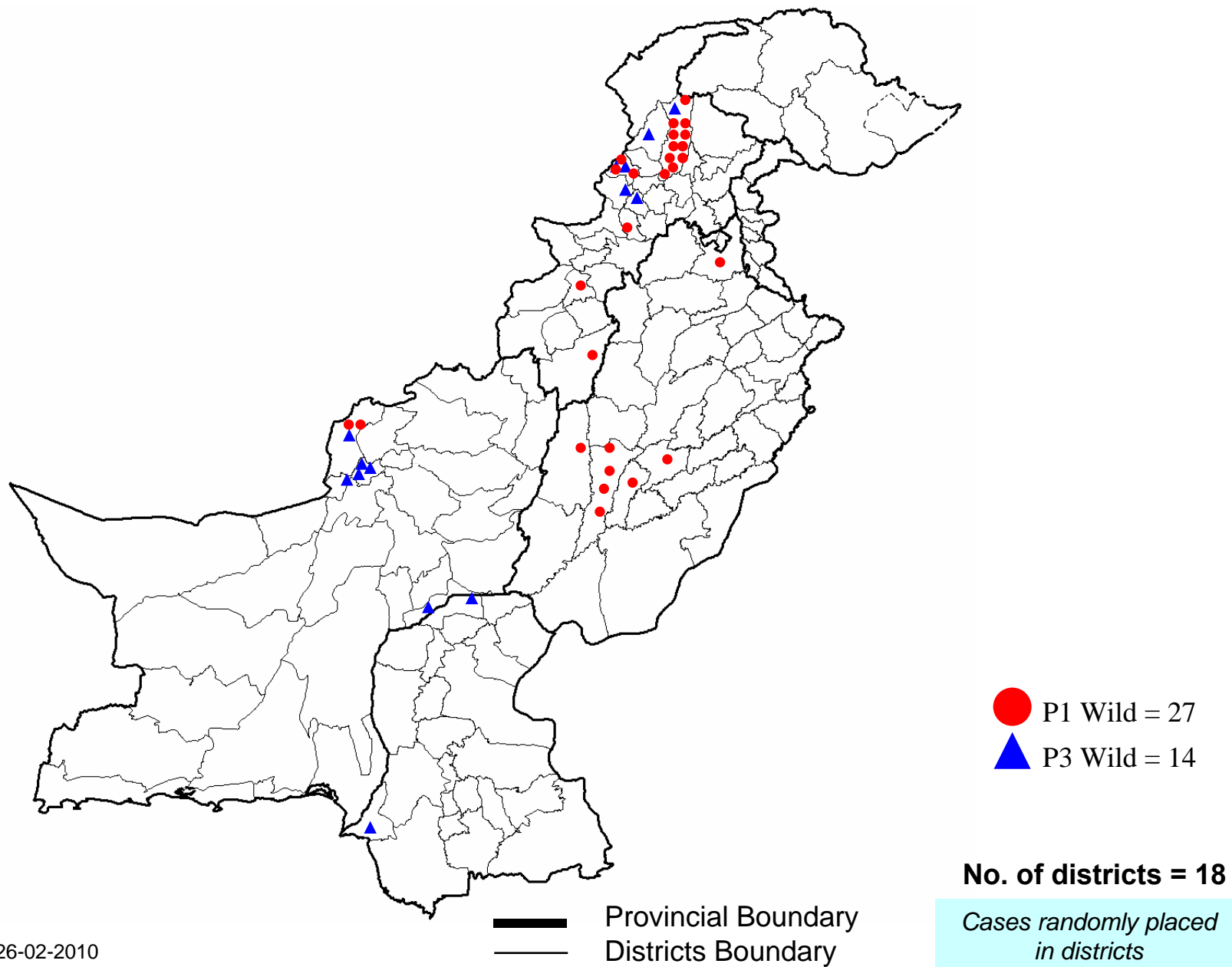
\* Afp.rec Data as of 26-02-2010

**Graph 3: Confirmed Polio Cases By Poliovirus Type, 2007-2010\***



\* Afp.rec Data as of 26-02-2010

## Map 2: Wild Polio cases in the last 6 months September 2009 to February 2010\*

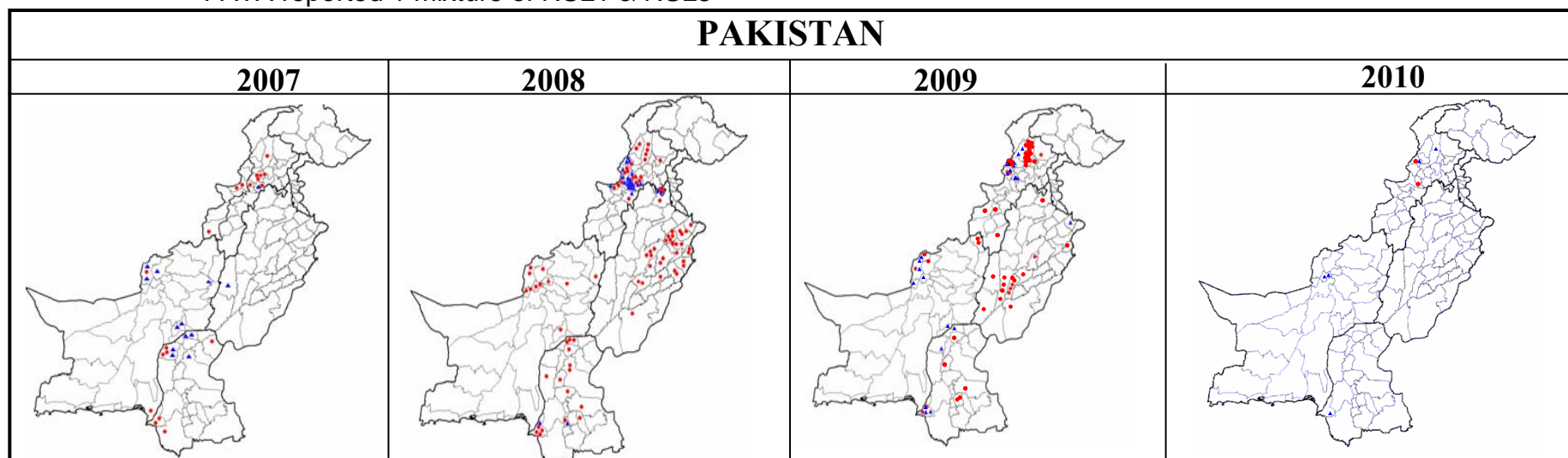


\* Afp.rec Data as of 26-02-2010

## Table 7: Polio Eradication Update, Pakistan 2007-2010\*

Province	Polio 1				Polio 3				Total Wild			
	2007	2008	2009	2010	2007	2008	2009	2010	2007	2008	2009	2010
PUNJAB	0	31	16	0	1	0	1	0	1	31	17	0
SINDH	7	16	7	0	5	2	5	1	12	18	12	1
NWFP	7	15	24	1	1	23	5	1	8	38	29	2
FATA <sup>^</sup>	3	7	8	1	0	7	11	1	3	14	20 <sup>^</sup>	2
BALUCHISTAN	2	11	5	0	6	0	6	2	8	11	11	2
AJK	0	0	0	0	0	0	0	0	0	0	0	0
Gilgit-Baltistan	0	0	0	0	0	0	0	0	0	0	0	0
ISLAMABAD	0	3	0	0	0	2	0	0	0	5	0	0
<b>PAKISTAN</b>	<b>19</b>	<b>81</b>	<b>60</b>	<b>2</b>	<b>13</b>	<b>36</b>	<b>28</b>	<b>5</b>	<b>32</b>	<b>117</b>	<b>89</b>	<b>7</b>

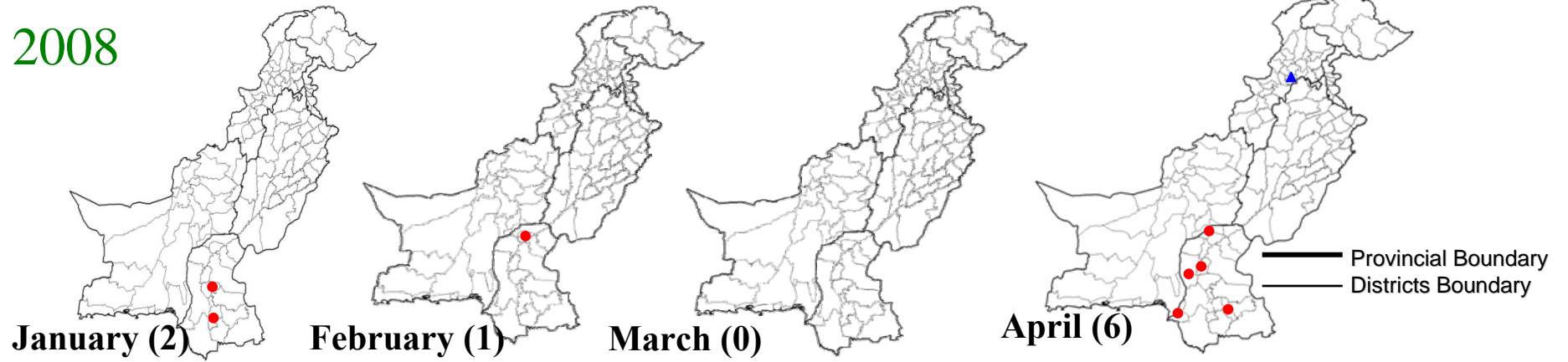
<sup>^</sup> FATA reported 1 mixture of NSL1 & NSL3



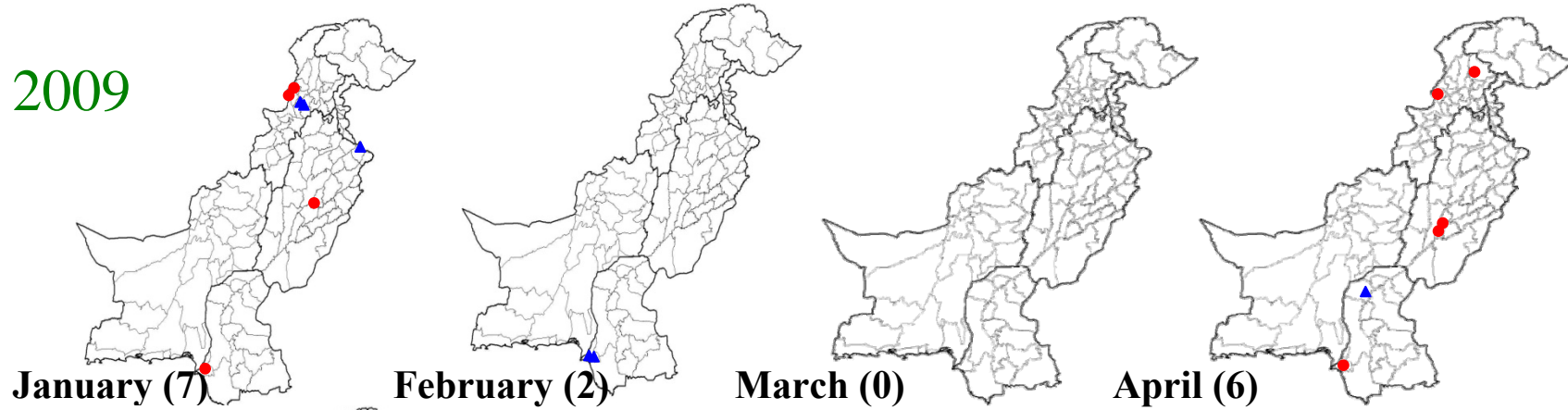
\* Afp.rec Data as of 26-02-2010

# Map 3: Monthly Comparison of P1 & P3 Polio Cases 2008-2010\*

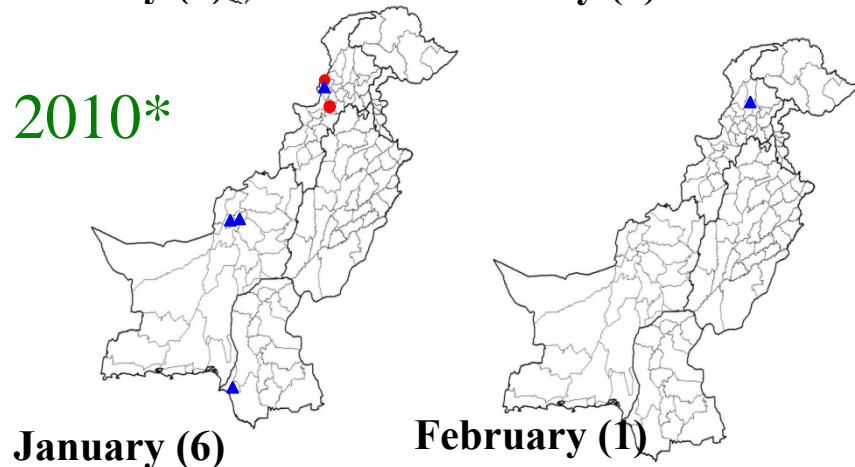
2008



2009



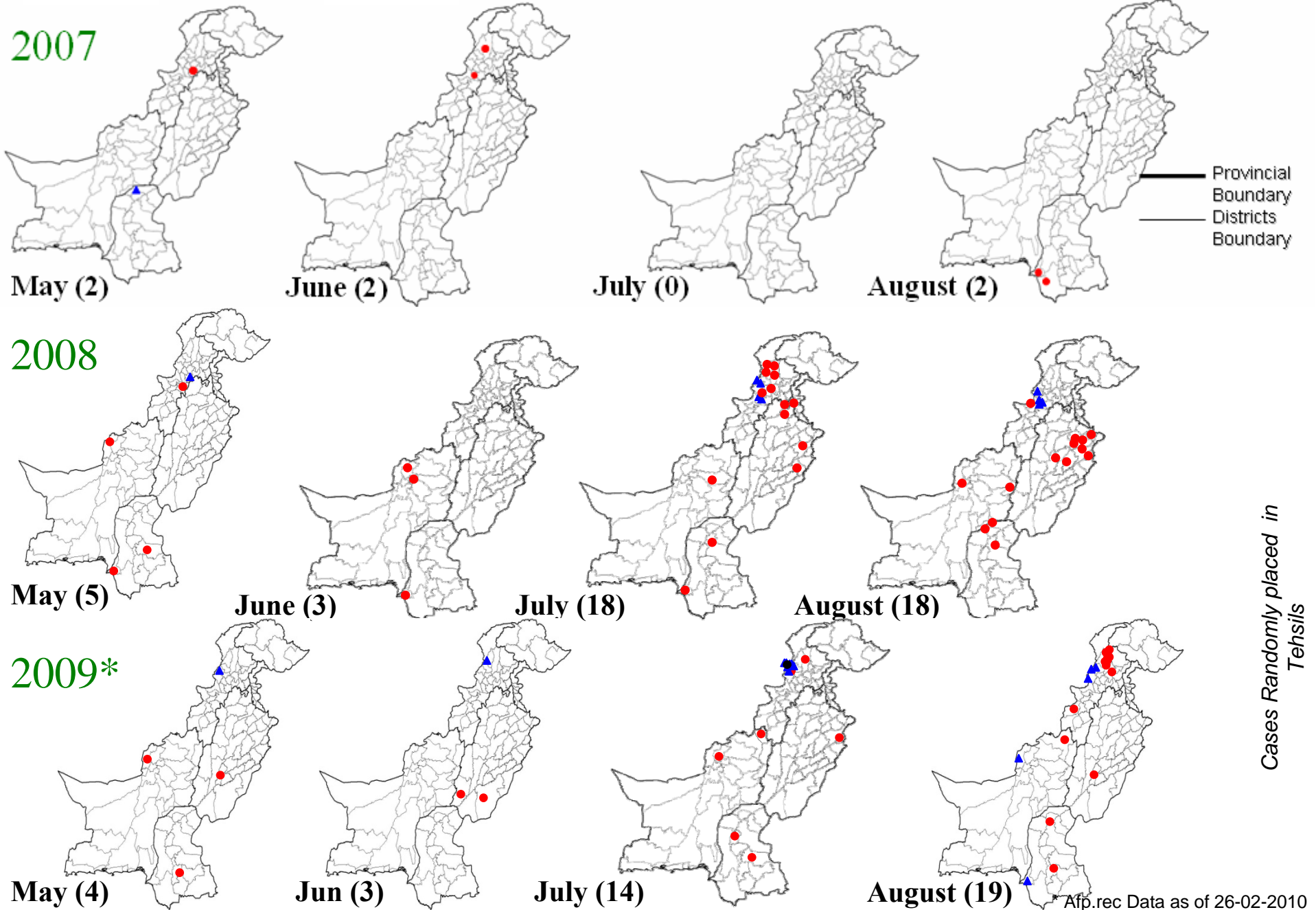
2010\*



Cases Randomly placed in Tehsils

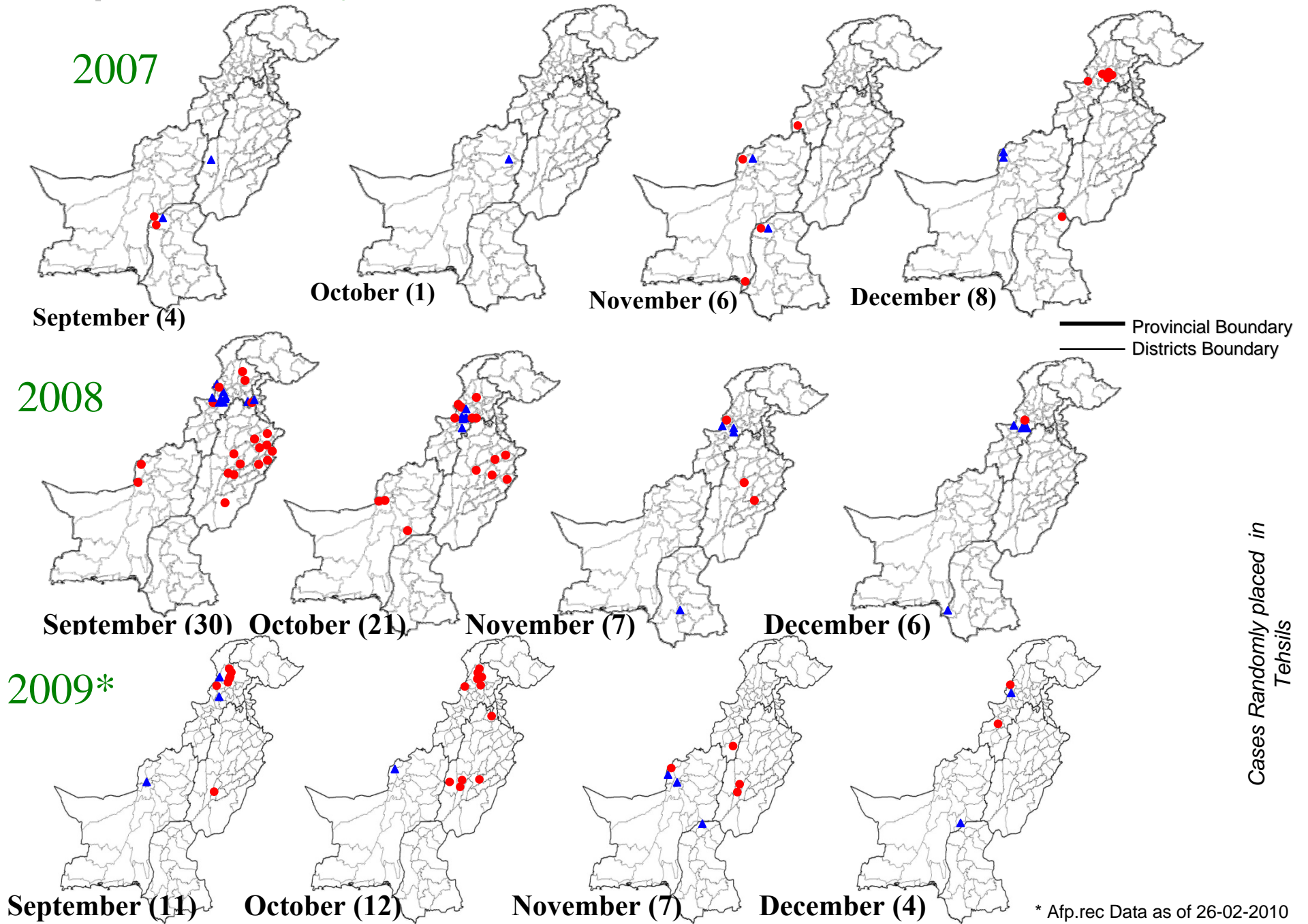
\* Afp.rec Data as of 26-02-2010

# Map 3.1: Monthly Comparison of P1 & P3 Polio Cases 2007-2009\*



\* Afp.rec Data as of 26-02-2010

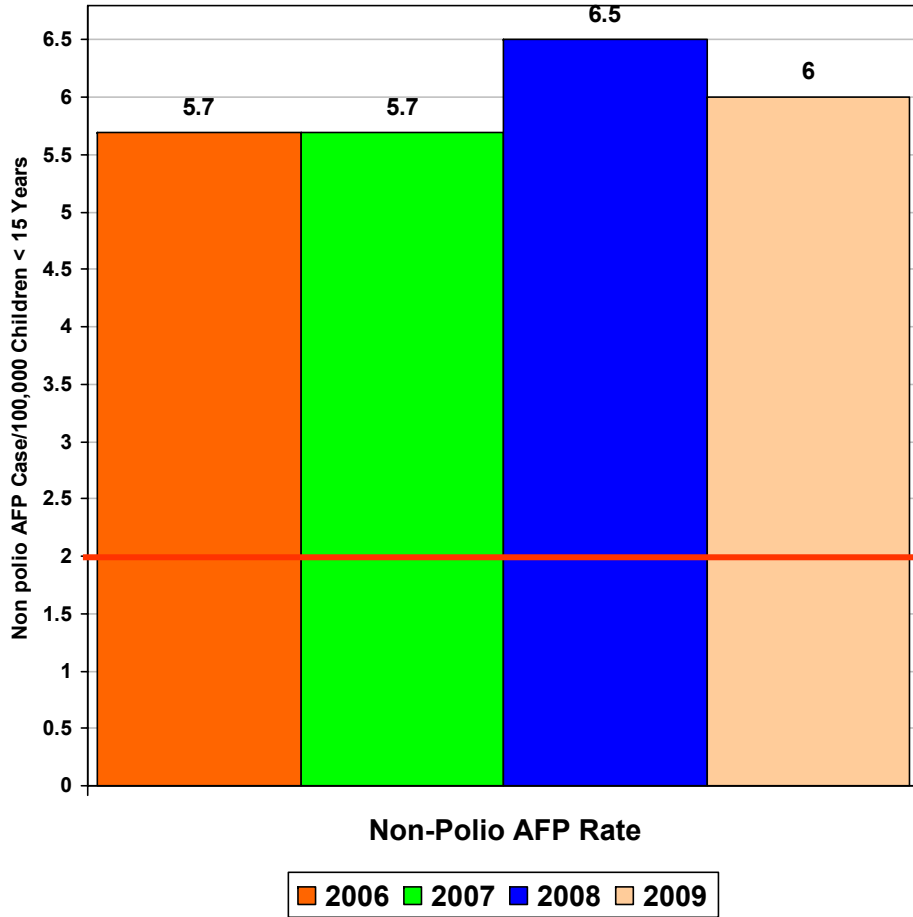
# Map 3.2: Monthly Comparison of P1 & P3 Polio Cases 2007-2009\*



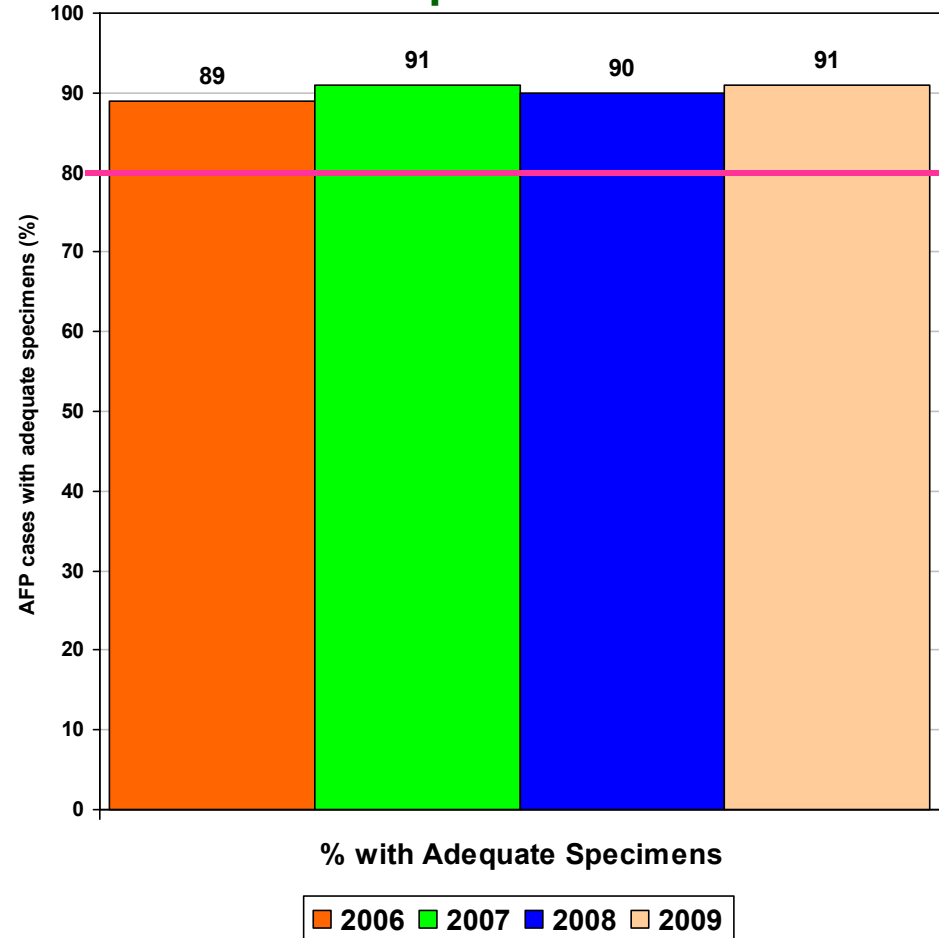
\* Afp.rec Data as of 26-02-2010

# Key Surveillance Indicators 2006-2009\*

## Graph 4\*\*



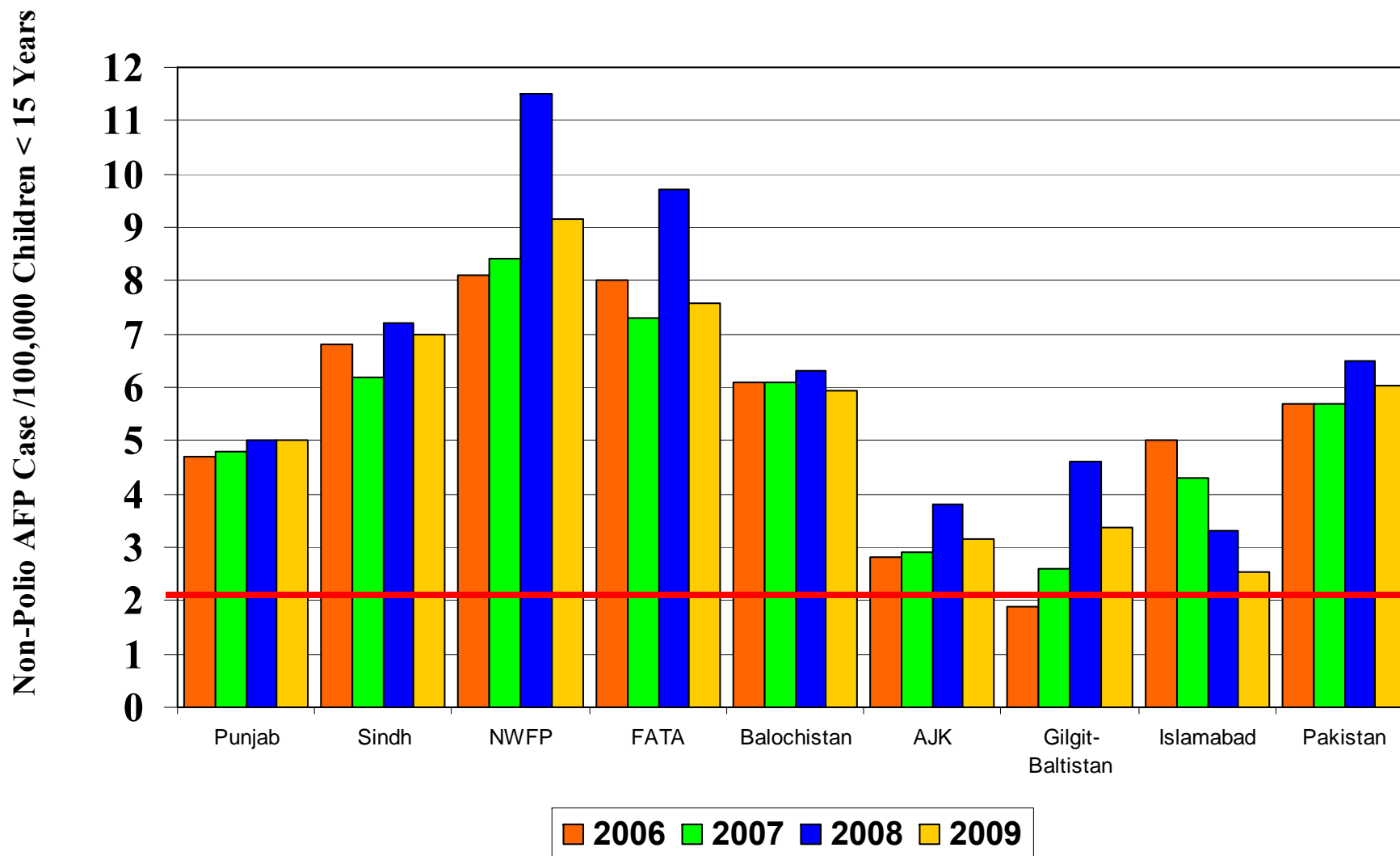
## Graph 5



\* Afp.rec Data as of 26-02-2010

\*\*Up to Week No. 52 ended on 02<sup>nd</sup> January 2009

## Graph 4.1 :Non Polio AFP Rate By Province, 2006-2009\*



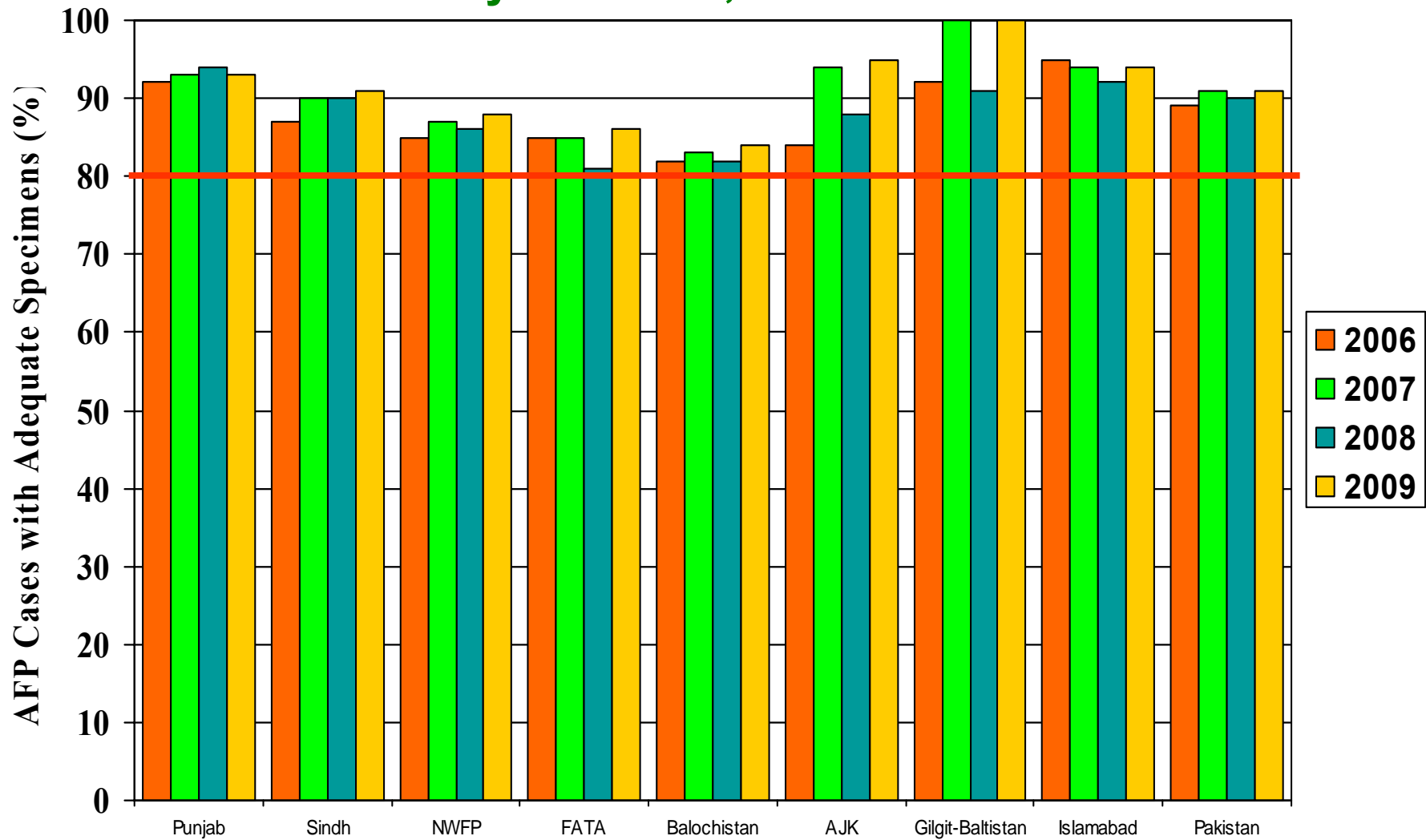
Up to Week No. 52 ended on 02<sup>nd</sup> January 2009

— Target Non-Polio AFP Rate 2/ 100000

\* Afp.rec Data as of 26-02-2010

# Graph 5.1: Percent AFP Cases with Adequate Specimens

## By Province, 2006-2009\*

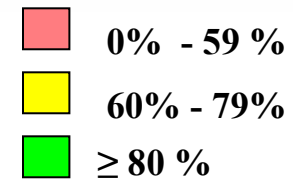
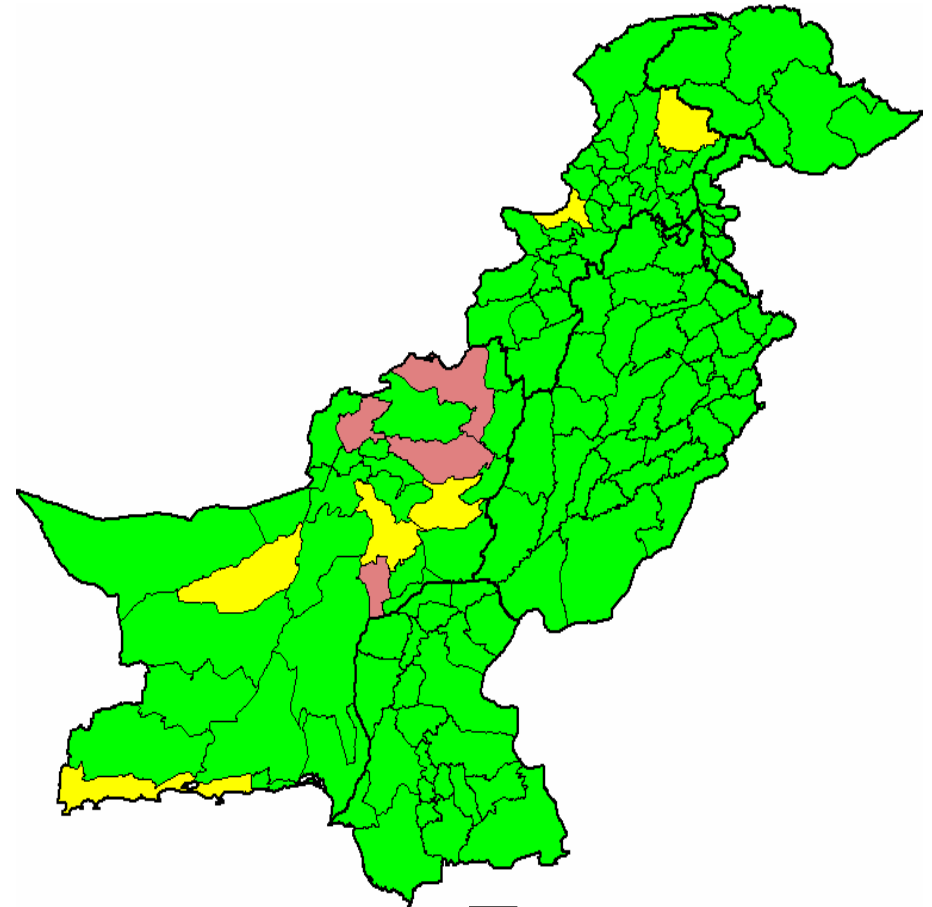
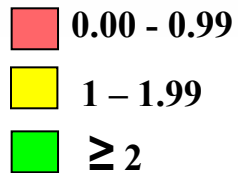
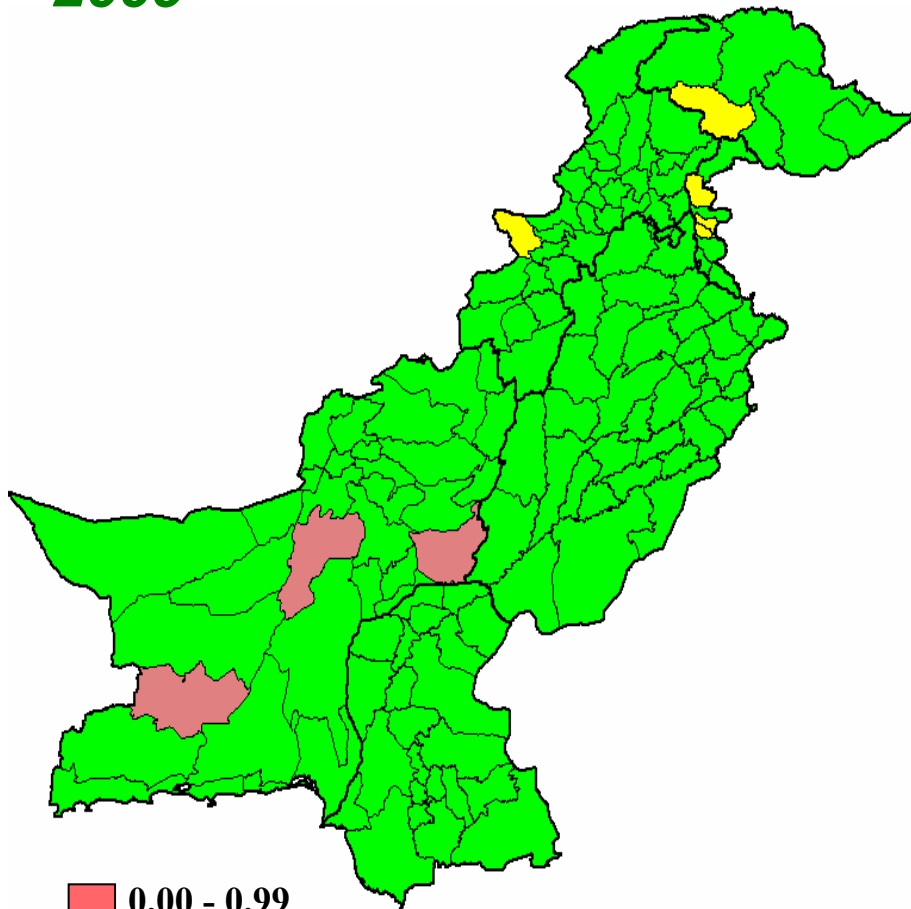


\* Afp.rec Data as of 26-02-2010

**Target Adequate Sample cases = 80%**

**Map 4: Non-Polio AFP Rate by District  
2009\***

**Map 5: Percent AFP Cases with Adequate Specimens, By District – 2009\***

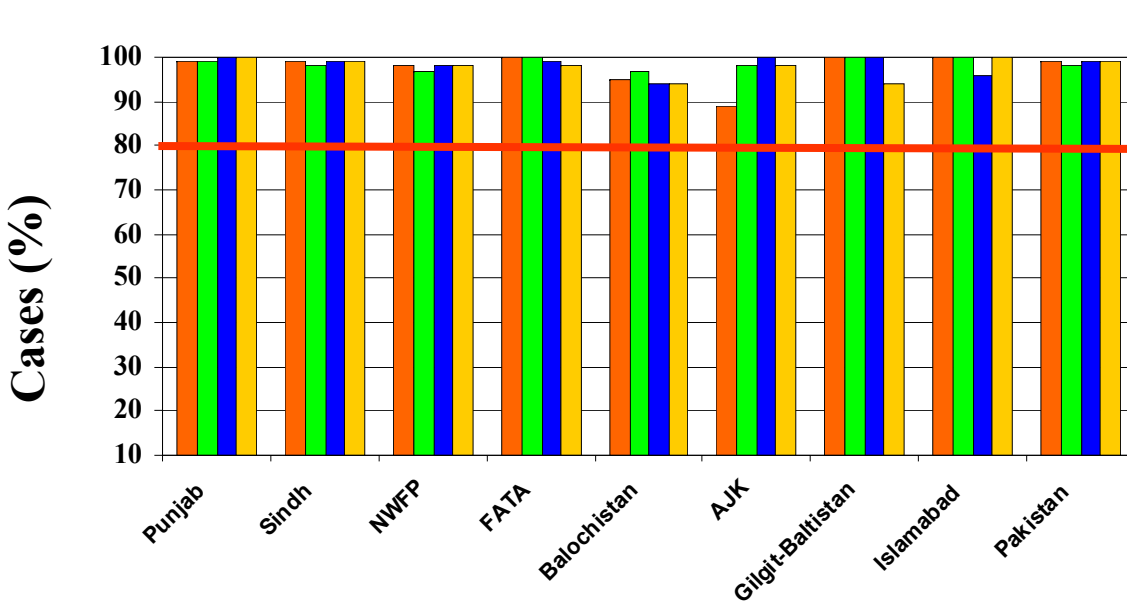
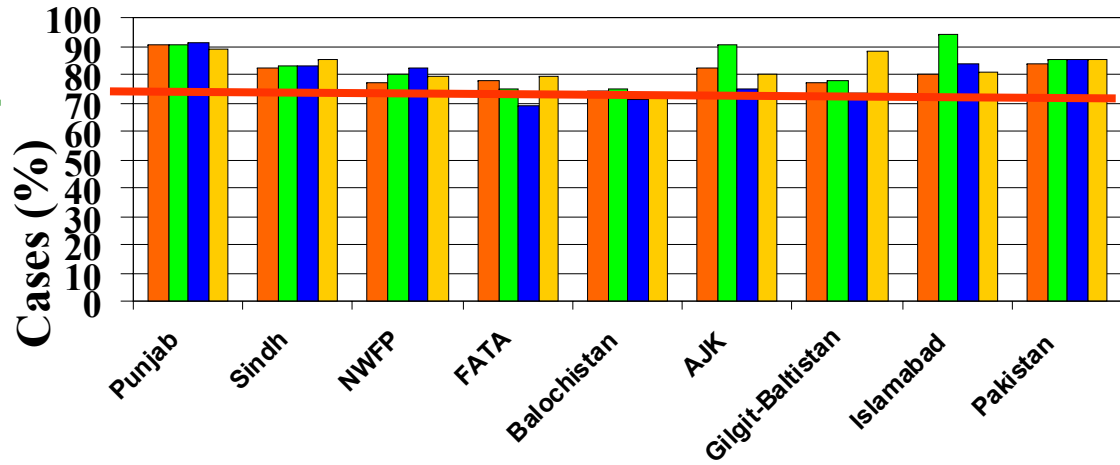


Up to Week No. 52 ended on 2<sup>nd</sup> January 2010

\* Afp.rec Data as of 26-02-2010

# Graph 6: Percent AFP Cases Notified within 07 days of paralysis onset

2006 ~ 2009\*, By Province



Provinces

Target Notified with in 7 days = 80%

# Graph 7: Percent AFP Cases Investigated within 48 hours of notification 2006 ~ 2009\*, By Province

2006 2007 2008 2009

Provinces

Target Investigated within 48 hours = 80%

\* Afp.rec Data as of 26-02-2010

**Table 8: AFP CASES PENDING FOR CLASSIFICATION WITH DATE OF ONSET MORE THAN 90 DAYS\***

S. No	DISTRICT	TEHSIL	EPID	SEX	AGE	DONSET	DOSE €	DSTOOL1	DSTOOL2	LAB	FEVER	ASYM	PROG	FUP	PEND (DAYS)
1	GUJRAT	SARAI ALAMGIR	PB/23/09/059	F	18	28-Oct-09	10	23-Nov-09	24-Nov-09	NVI	Y	Y	Y	Y	120
2	KHAIRPUR	KOT DIJI	SD/43/09/082	F	36	11-Nov-09	11	01-Dec-09	02-Dec-09	NVI	Y	Y	Y	Y	106
3	KHILANDHI	LANDHI	SD/69/09/018	M	59	18-Nov-09	33	02-Dec-09	04-Dec-09	EV	N	N	Y	Y	99
4	KHILANDHI	LANDHI	SD/69/09/019	M	48	23-Nov-09	17	14-Jan-10	15-Jan-10	NVI	Y	Y	Y	Y	94
5	MIRPURKHAS	MIRPUR KHAS	SD/31/09/058	M	60	25-Nov-09	7	Died before stool collection			N	Y	Y	DIED	92
6	CHARSADA	CHARSADA	NW/31/09/066	F	20	25-Sep-09	21	Stool not collected due to late notification			N	Y	N	Y	153
7	SWAT	MATTA	NW/24/09/073	F	12	10-Nov-09	5	02-Dec-09	03-Dec-09	NVI	N	Y	Y		107
8	KOHLU	MAWAND	BN/34/09/004	M	120	05-Nov-09	0	30-Dec-09	31-Dec-09	NVI	Y	N	Y		112

€ Based on recall of parents

\* Afp.rec Data as of 26-02-2010

Follow-up not done

FUP = Residual Weakness at 60 days follow up,  
UK = Unknown