



**World Health  
Organization**

**Weekly  
AFP Surveillance Update  
Pakistan**

**Week 07** (*Ended on 20<sup>th</sup> February , 2010*)

AFP Surveillance



***National Surveillance Cell  
Federal EPI***

World Health Organization Country Office,  
Chak Shahzad, Park Road,  
Islamabad, Pakistan

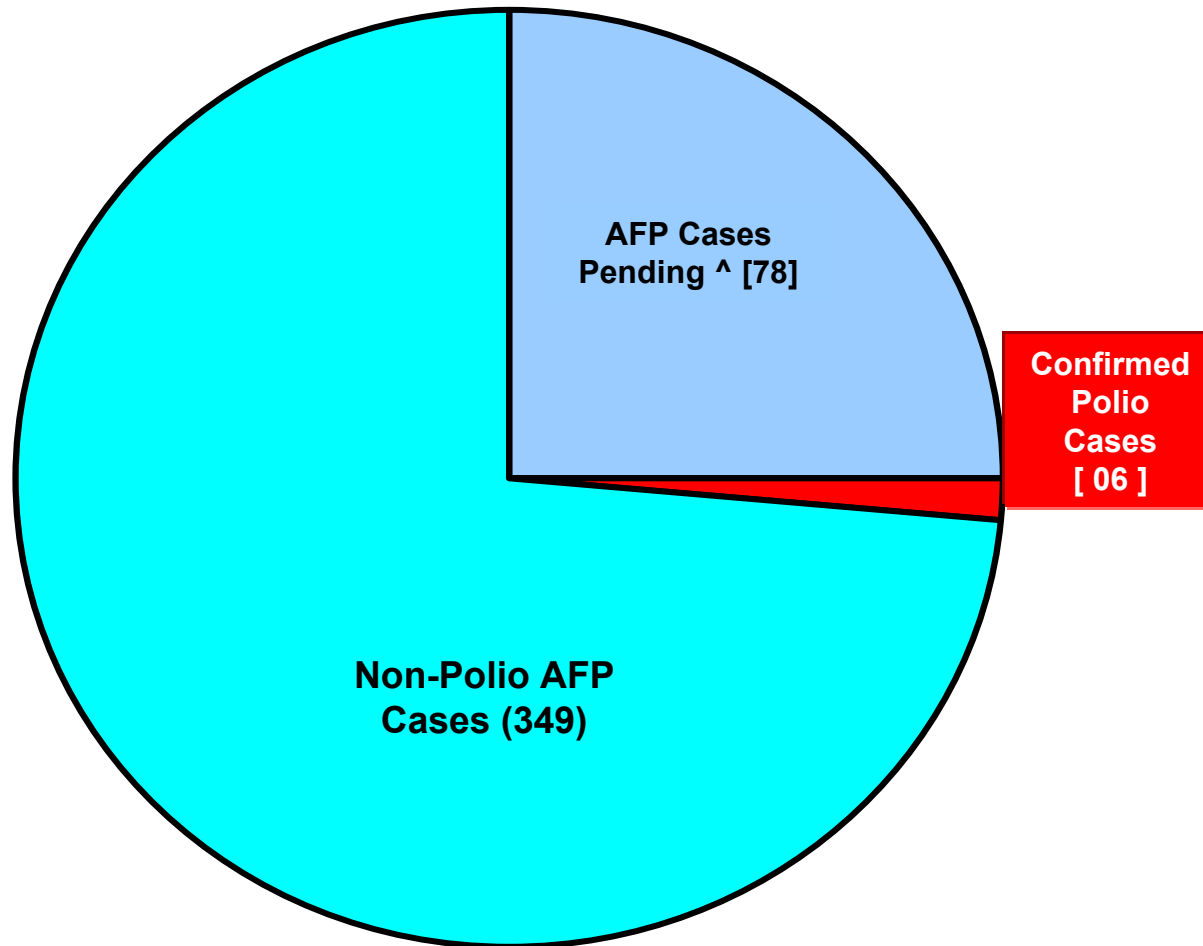
Tel: +92-51 9255123 / 9255282 /9255184

Fax: +92-51 9255192

Email: [epidata@pak.emro.who.int](mailto:epidata@pak.emro.who.int)

Web site: [www.who.org/polioeradication](http://www.who.org/polioeradication)

## AFP Case Profile 2010\*



**Total AFP Cases Reported in 2010 = 433**

**^9 Inadequate cases pending ERC;  
20 Inadequate cases pending FUP  
49 Pending Lab**

*In 2009, 52 cases are pending for classification (38 for ERC & 14 for FUP)*

\* Afp.rec Data as of 20-02-2010

# Table 1: List of Confirmed Polio Cases, Pakistan 2009\* 1/5

S. NO.	PROVINCE	DISTRICT	EPID NO.	SEX	AGE (m)	DATE ONSET OF PARALYSIS	NO. OPV DOSES €		FEVER	Asymmetric Paralysis	Rapid Progression	REFUSAL	FUP	WPV TYPE	GENETICS	
							Routine <sup>e</sup>	SIAs							Cluster <sup>f</sup>	Sub-Cluster <sup>f</sup>
1	PUNJAB	SIALKOT	PB/25/09/001	F	25	11/01/2009	1	7+	Yes	Yes	Yes	No	Y	NSL3	B1	C-7
2	NWFP	CHARSADA ^^*	NW/31/09/002	M	30	11/01/2009	1	7+	Yes	Yes	Yes	No	Y	NSL3	B1	C-7
3	FATA	MOHMAND <sup>‡</sup>	NW/35/09/001	M	12	12/01/2009	0	1	Yes	Yes	Yes	No	N	NSL1	A3	D-2
4	NWFP	CHARSADA ^^*	NW/31/09/005	M	32	19/01/2009	1	7+	Yes	Yes	Yes	No	Y	NSL3	B1	C-7
5	SINDH	KHI GADAP	SD/63/09/003	M	16	27/01/2009	0	4	Yes	No	Yes	No	Lost	NSL1	A3	A-1A
6	PUNJAB	TT SINGH	PB/52/09/006	M	60	31/01/2009	3	7+	Yes	No	Yes	No	Y	NSL1	B4	A-1
7	FATA	BAJOUR <sup>‡</sup>	NW/33/09/002	F	12	29/01/2009	0	3	Yes	Yes	Yes	No	Y	NSL1	B4	A-1
8	SINDH	KHI BALDIA ^^	SD/61/09/003	M	24	11/02/2009	0	4	Yes	Yes	Yes	No	Y	NSL3	B1	C-5
9	SINDH	KHI BALDIA	SD/61/09/006	F	18	25/02/2009	0	7+	Yes	Yes	Yes	No	Y	NSL3	B1	C-5
10	FATA	MOHMAND <sup>‡</sup> ^^	NW/35/09/007	F	24	12/04/2009	0	6	Yes	Yes	Yes	No	Y	NSL1	B4	A-1
11	SINDH	KAMBAR	SD/55/09/009	M	21	10/04/2009	1	7+	Yes	Yes	Yes	No	Y	NSL3	B1	C-5
12	PUNJAB	MULTAN	PB/61/09/037	M	10	21/04/2009	3	7	Yes	Yes	Yes	No	Y	NSL1	A3	D-2
13	PUNJAB	MULTAN	PB/61/09/043	M	8	27/04/2009	3	5	Yes	Yes	Yes	No	Y	NSL1	A3	D-2
14	BALUCHISTAN	KABDULAH	BN/14/09/006	M	17	03/05/2009	0	2	Yes	Yes	Yes	No	Y	NSL1	A3	A-1A
15	FATA	BAJOUR <sup>‡</sup>	NW/33/09/017	F	8	06/05/2009	0	0	Yes	Yes	Yes	No	Y	NSL3	B1	C-6B
16	NWFP	KOHISTAN § ^^	NW/13/09/001	F	54	23/04/2009	0	7+	No	No	Yes	No	Y	NSL1	B4	A-1
17	SINDH	KHI G IQBAL	SD/65/09/011	F	30	28/04/2009	3	7+	No	No	Yes	No	Died	NSL1	A3	A-1A
18	PUNJAB	MULTAN	PB/61/09/055	F	11	26/05/2009	3	7+	No	Yes	Yes	No	Y	NSL1	B4	A-1
19	SINDH	T. ALLAH YAR	SD/27/09/011	M	18	28/05/2009	3	7	Yes	Yes	Yes	No	Y	NSL1	A3	A-1A
20	PUNJAB	RAJANPUR	PB/82/09/031	M	8	01/06/2009	1	4	No	Yes	Yes	No	Y	NSL1	A3	D-2

^^ Afghan Refugees

^^ Nomad

§ Contact had WPV

€ Based on recall of parents

‡ From areas having insecurity for long period.

\* Afp.rec Data as of 20-02-2010

FUP = Residual Weakness at 60days FUP

# Table 1.1: List of Confirmed Polio Cases, Pakistan 2009\* 2/5

S.NO	PROVINCE	DISTRICT	EPID NO.	SEX	AGE (m)	DATE ONSET OF PARALYSIS	NO. OPV DOSES €		FEVER	Asymmetric Paralysis	Rapid Progression	REFUSAL	FUP	WPV TYPE	GENETICS	
							Routine	SIA's							Cluster	Sub-Cluster
21	PUNJAB	BAHAWALPUR	PB/71/09/024	F	30	13/06/2009	3	7+	No	No	Yes	No	Y	NSL1	A3	A-1A
22	FATA	BAJOUR*	NW/33/09/026	M	23	01/07/2009	0	2	Yes	Yes	Yes	No	Y	NSL3	B1	C-6B
23	BALUCHISTAN	SHERANI	BN/26/09/002	M	3	04/07/2009	0	0	Yes	Yes	Yes	Yes	Y	NSL1	A3	A-1A
24	FATA	BAJOUR	NW/33/09/025	M	16	03/07/2009	0	7	Yes	Yes	Yes	No	Y	NSL1	B4	A-1
25	NWFP	DIR UPPER	NW/25/09/014	M	18	28/06/2009	0	2	Yes	Yes	Yes	No	Y	NSL3	B1	C-7
26	BALUCHISTAN	PISHIN	BN/12/09/007	M	6	13/07/2009	0	0	Yes	Yes	Yes	Yes	Y	NSL1	A3	A-1A
27	PUNJAB	LAHORE	PB/31/09/064	F	18	23/07/2009	0	0	Yes	Yes	Yes	No	Y	NSL1	B4	A-1
28	FATA	BAJOUR *	NW/33/09/031	F	9	08/07/2009	0	0	Yes	Yes	Yes	No	Y	NSL3	B1	C-5
29	FATA	BAJOUR *	NW/33/09/034	F	24	20/07/2009	0	0	Yes	Yes	Yes	No	Y	NSL3	B1	C-6B
30	FATA	BAJOUR	NW/33/09/035	F	14	22/07/2009	0	0	Yes	Yes	Yes	No	Y	NSL3	B1	C-5
31	FATA	BAJOUR	NW/33/09/036	F	26	17/07/2009	0	0	Yes	Yes	Yes	No	Y	NSL3	B1	C-5
32	SINDH	NOSHERO FERAZ	SD/45/09/024	M	54	28/07/2009	0	7+	Yes	Yes	Yes	No	Y	NSL1	A3	A-1A
33	NWFP	SWAT *	NW/24/09/014	F	10	25/07/2009	0	0	Yes	Yes	Yes	No	Y	NSL1	A3	A-2
34	FATA	BAJOUR *	NW/33/09/032	F	18	14/07/2009	0	2	Yes	Yes	Yes	No	Y	NSL3	B1	C-7
35	SINDH	SANGHAR	SD/32/09/034	M	11	20/07/2009	3	5	Yes	Yes	Yes	No	Y	NSL1	A3	A-2
36	SINDH	SHIKARPUR	SD/52/09/040	F	12	02/08/2009	3	4	Yes	Yes	Yes	No	Y	NSL1	A3	A-1A
37	NWFP	SWAT *	NW/24/09/020	F	11	03/08/2009	1	0	Yes	No	Yes	No	Y	NSL1	A3	A-1A
38	NWFP	SWAT *	NW/24/09/019	F	12	01/08/2009	0	0	Yes	No	Yes	No	Y	NSL1	A3	A-1A
39	FATA	BAJOUR *	NW/33/09/042	M	20	08/08/2009	0	4	Yes	Yes	Yes	No	Y	NSL3	B1	C-7
40	FATA	BAJOUR	NW/33/09/039	F	5	29/07/2009	0	0	Yes	Yes	UK	No	Y	NSL1+ NSL3	B4 B1	A-1 C-6B

¥ From areas having insecurity for long period.

€ Based on recall of parents

\* Afp.rec Data as of 20-02-2010

FUP = Residual Weakness at 60days FUP

UK =UNKNOWN

**Table 1.2: List of Confirmed Polio Cases, Pakistan 2009\*** 3/5

S.NO	PROVINCE	DISTRICT	EPID NO.	SEX	AGE (m)	DATE ONSET OF PARALYSIS	NO. OPV DOSES €		FEVER	Asymmetric Paralysis	Rapid Progression	REFUSAL	FUP	WPV TYPE	GENETICS	
							Routine	SIA's							Cluster	Sub-Cluster
41	NWFP	SWAT ‡	NW/24/09/021	M	9	04/08/2009	0	0	Yes	No	No	No	Y	NSL1	A3	A-1A
42	FATA	BAJOUR	NW/33/09/041	F	24	03/08/2009	0	0	Yes	No	Yes	No	Y	NSL3	B1	C-6B
43	NWFP	SHANGLA ‡	NW/26/09/008	M	12	13/08/2009	0	0	Yes	Yes	Yes	No	Y	NSL1	A3	A-1A
44	SINDH	T.ALLAHYAR	SD/27/09/022	M	8	14/08/2009	0	0	Yes	Yes	Yes	No	Y	NSL1	A3	A-1A
45	BALUCHISTAN	KABDULAH	BN/14/09/010	M	32	13/08/2009	0	7+	Yes	UK	Yes	No	Y	NSL3	B1	C-5
46	BALUCHISTAN	SHERANI ^^	BN/26/09/003	F	14	20/08/2009	0	3	Yes	No	Yes	No	Lost	NSL1	A3	A-1A
47	NWFP	SWAT‡	NW/24/09/029	M	12	22/08/2009	0	0	Yes	Yes	No	No	Y	NSL1	A3	A-1A
48	FATA	WAZIR-N ‡	NW/64/09/015	M	11	23/08/2009	0	0	Yes	No	Yes	No	Y	NSL1	A3	A-1A
49	FATA	MOHMAND	NW/35/09/017	M	14	24/08/2009	0	1	Yes	Yes	Yes	No	Y	NSL3	B1	C-5
50	NWFP	SWAT ‡	NW/24/09/030	F	9	17/08/2009	0	0	Yes	Yes	No	No	Y	NSL1	A3	A-1A
51	NWFP	SWAT ‡	NW/24/09/031	M	24	17/08/2009	3	7+	Yes	Yes	No	No	Y	NSL1	A3	A-1A
52	NWFP	SWAT ‡	NW/24/09/034	M	24	02/09/2009	0	0	UK	Yes	Yes	No	Y	NSL1	A3	A-1A
53	NWFP	SWAT ‡	NW/24/09/033	F	10	30/08/2009	0	0	Yes	No	No	No	Y	NSL1	A3	A1A
54	NWFP	SWAT ‡	NW/24/09/041	F	18	29/08/2009	0	0	Yes	No	No	No	Y	NSL1	A3	A-1A
55	NWFP	SWAT ‡	NW/24/09/042	M	12	07/09/2009	0	0	Yes	Yes	No	No	Y	NSL1	A3	A-1A
56	FATA	BAJOUR	NW/33/09/048	M	18	01/09/2009	0	7+	Yes	Yes	Yes	No	Y	NSL1	A3	D-2
57	NWFP	CHARSADA ‡	NW/31/09/047	F	46	09/09/2009	3	7+	Yes	Yes	Yes	No	Y	NSL3	B1	C-5
58	PUNJAB	MULTAN	PB/61/09/081	M	15	27/08/2009	3	7+	No	Yes	Yes	No	Y	NSL1	A3	D-2
59	NWFP	SWAT‡	NW/24/09/038	F	24	05/09/2009	0	2	Yes	No	Yes	No	Y	NSL1	A3	A1A
60	NWFP	SWAT‡	NW/24/09/044	F	10	11/09/2009	0	1	Yes	No	Yes	No		NSL1	A3	A-1A

‡ From areas having insecurity for long period.

€ Based on recall of parents

\* Afp.rec Data as of 20-02-2010

^^ Nomad

FUP = Residual Weakness at 60days FUP

UK =UNKNOWN

# Table 1.3: List of Confirmed Polio Cases, Pakistan 2009\* 4/5

S.NO	PROVINCE	DISTRICT	EPID NO.	SEX	AGE (m)	DATE ONSET OF PARALYSIS	NO. OPV DOSES €		FEVER	Asymmetric Paralysis	Rapid Progression	REFUSAL	FUP	WPV TYPE	GENETICS	
							Routine	SIA's							Cluster	Sub-Cluster
61	SINDH	KHIGADAP <sup>^^</sup> §	SD/63/09/022	M	2	24/08/2009	0	2	No	Yes	Yes	No	N	NSL3	B1	C-5
62	BALUCHISTAN	QUETTA <sup>^^</sup>	BN/11/09/018	M	5	14/09/2009	0	3	Yes	Yes	Yes	No	Y	NSL3	B1	C-5
63	PUNJAB	KHANEWAL	PB/62/09/070	M	17	2/10/2009	3	7+	Yes	Yes	Yes	No	Y	NSL1	A3	D-2
64	PUNJAB	MUZAFARGARH	PB/83/09/090	M	72	4/10/2009	0	7+	No	No	Yes	No	Died	NSL1	A3	D-2
65	NWFP	SWAT <sup>¥</sup>	NW/24/09/064	M	24	9/10/2009	0	0	Yes	Yes	Yes	No	Y	NSL1	A3	A-1A
66	BALUCHISTAN	K ABDULLAH	BN/14/09/011	M	13	7/10/2009	0	3	Yes	Yes	Yes	No	Died	NSL3	B1	C-5
67	NWFP	DIR UPPER	NW/25/09/017	M	25	26/09/2009	0	0	Yes	No	No	No	Y	NSL3	B1	C-7
68	NWFP	SWAT <sup>¥</sup>	NW/24/09/061	M	12	2/10/2009	0	2	Yes	No	No	No	Y	NSL1	A3	A-1A
69	NWFP	SWAT <sup>¥</sup>	NW/24/09/062	F	18	28/09/2009	0	0	Yes	No	No	No	Y	NSL1	A3	A-1A
70	NWFP	SWAT <sup>¥</sup>	NW/24/09/058	M	24	29/09/2009	0	0	Yes	Yes	Yes	No	Y	NSL1	A3	A-1A
71	NWFP	SWAT <sup>¥</sup>	NW/24/09/063	M	18	9/10/2009	0	0	Yes	No	Yes	No	Y	NSL1	A3	A-1A
72	PUNJAB	MULTAN	PB/61/09/086	F	9	27/09/2009	2	7	Yes	No	Yes	No	Y	NSL1	A3	D-2
73	NWFP	SWAT <sup>¥</sup>	NW/24/09/066	M	46	17/10/2009	3	7+	Yes	No	Yes	No	Y	NSL1	A3	A-1A
74	PUNJAB	RAWALPINDI	PB/11/09/063	F	15	03/10/2009	3	7	Yes	Yes	Yes	No	Y	NSL1	A3	D-2
75	PUNJAB	DGKHAN	PB/81/09/085	M	156	05/10/2009	3	UK	Yes	Yes	Yes	No	Y	NSL1	A3	A-1A
76	FATA	BAJOUR <sup>¥</sup>	NW/33/09/057	F	12	18/10/2009	0	0	Yes	Yes	Yes	No		NSL1	B4	A-1
77	NWFP	SWAT <sup>¥</sup>	NW/24/09/069	F	9	25/10/2009	0	1	Yes	No	No	No	Y	NSL1	A3	A-1A
78	PUNJAB	MUZAFARGARH	PB/83/09/091	M	5	04/10/2009	0	4	Yes	No	Yes	No	Y	NSL1	A3	D-2
79	BALUCHISTAN	KILLA ABDULLAH	BN/14/09/012	F	12	05/11/2009	0	0	Yes	Yes	Yes	Yes	Died	NSL1	A3	A-1A
80	BALUCHISTAN	KILLA ABDULLAH	BN/14/09/013	F	26	05/11/2009	0	7+	Yes	UK	Yes	No	N	NSL3	B1	C-5

<sup>^^</sup> Afghan Refugees

<sup>¥</sup> From areas having insecurity for long period.

<sup>§</sup> Contact had WPV

<sup>€</sup> Based on recall of parents

FUP = Residual Weakness at 60days FUP

UK =UNKNOWN

\* Afp.rec Data as of 20-02-2010

## Table 1.4: List of Confirmed Polio Cases, Pakistan 2009\* 5/5

S.NO	PROVINCE	DISTRICT	EPID NO.	SEX	AGE (m)	DATE ONSET OF PARALYSIS	NO. OPV DOSES €		FEVER	Asymmetric Paralysis	Rapid Progression	REFUSAL	FUP	WPV TYPE	GENETICS	
							Routine	SIA's							Cluster	Sub-Cluster
81	NWFP	DI KHAN <sup>^</sup>	NW/60/09/021	F	24	07/11/2009	0	0	Yes	Yes	Yes	No	Y	NSL1	A3	A1-A
82	PUNJAB	MUZAFFARGRAH	PB/83/09/101	M	7	03/11/2009	0	6	No	Yes	Yes	No	Y	NSL1	A3	D-2
83	SINDH	JACOBABAD	SD/53/09/0800	F	8	16/11/2009	0	0	Yes	Yes	Yes	No	Y	NSL3	B1	C-5
84	PUNJAB	MUZAFFARGRAH	PB/83/09/107	M	18	21/11/2009	0	7+	No	No	Yes	No	Y	NSL1	A3	D-2
85	BALUCHISTAN	QUETTA	BN/11/09/028	M	11	26/11/2009	0	7+	Yes	Yes	Yes	No	Y	NSL3	B1	C-5
86	FATA	BAJOUR <sup>¥</sup>	NW/33/09/066	F	12	06/12/2009	0	0	Yes	No	No	No		NSL1	B4	A-1
87	FATA	MOHMAND	NW/35/09/021	M	11	25/12/2009	0	1	Yes	Yes	Yes	No	^	NSL3	B1	C6-B
88	BALUCHISTAN	JAFFARABAD	BN/43/09/031	M	84	31/12/2009	1	7+	Yes	Yes	Yes	No	^	NSL3	B1	C-5
89	NWFP	BANNU <sup>§</sup>	NW/61/09/025	M	12	05/12/2009	0	2	Yes	Yes	Yes	Yes	Y	NSL1	A3	A1-A

<sup>^</sup> Nomad

<sup>¥</sup> From areas having insecurity for long period.

<sup>§</sup> Contact had WPV

<sup>€</sup> Based on recall of parents

\* Afp.rec Data as of 20-02-2010

FUP = Residual Weakness at 60days FUP  
<sup>^</sup> 60 days follow up not due

## Table 2: List of Confirmed Polio Cases, Pakistan 2010\*

S. NO.	PROVINCE	DISTRICT	EPID NO.	SEX	AGE (m)	DATE ONSET OF PARALYSIS	NO. OPV DOSES €		FEVER	Asymmetric Paralysis	Rapid Progression	REFUSAL	FUP	WPV TYPE	GENETICS	
							Routine	SIAs							Cluster	Sub-Cluster
1	FATA	BAJOUR ‡	NW/33/10/001	F	9	01/01/2010	0	0	Y	Y	Y	Y	^	NSL1	B4	A-1
2	BALUCHISTAN	QUETTA	BN/11/10/001	M	14	07/01/2010	0	7	Y	Y	Y	N	^	NSL3	B1	C-5
3	FATA	BAJOUR ‡	NW/33/10/002	M	34	12/01/2010	0	7	Y	Y	Y	N	^	NSL3	B1	C-5
4	SINDH	KHIGULSHAN	SD/65/10/002	M	18	19/01/2010	0	6	Y	N	Y	N	^	NSL3	B1	C-5
5	NWFP	PESHAWAR	NW/30/10/006	F	5	27/01/2010	1	3	Y	Y	Y	N	^	NSL1	A3	D-2
6	BALUCHISTAN	QUETTA	BN/11/10/003	F	24	30/01/2010	0	7+	Y	N	Y	N	^	NSL3		

New Case

€ Based on recall of parents

‡ From areas having insecurity for long period.

\* Afp.rec Data as of 20-02-2010

FUP = Residual Weakness at 60days FUP  
^ 60 days follow up not due

**Table 3: LAB Update 2010\***

Month of onset	Cases	Cases under process		Negative cases	NPEV positive	NPEV %	Within 14 days results	Positive cases	
		Culture	ITD					Wild	Vaccine
January	393	7	0	310	53	13%	98%	6	17
February	121	97	1	23	0	0%	19%	0	0
<b>TOTAL AFP</b>	<b>514</b>	<b>104</b>	<b>1</b>	<b>333</b>	<b>53</b>	<b>10%</b>	<b>80%</b>	<b>6</b>	<b>17</b>

**Specimens of 2 AFP cases & 9 Contacts are pending in lab for 2009**

\* LAB.rec Data as of 22-02-2010

**Table 4: Urgent Pending Cases 2010\***

S. No	DISTRICT	TEHSIL	EPID	DONSET	AGE	SEX	DOSE	DLOPV	Urgent by Field	¥ NSC Criteria	LAB NO.	Date of first stool collection	Date of Inoculation	Culture-update
1	SWAT	MATTA	NW/24/10/001	05-Feb-10	8	M	3	15-Jan-10	N	Y	499	08-Feb-10	11-Feb-10	L20B+
2	KHIGADAP	GADAP	SD/63/10/001	03-Feb-10	15	F	3	18-Jan-10	Y	Y	520	11-Feb-10	13-Feb-10	UP

¥ Fever, Rapid Progression, Age < 48months & Doses < 7

€ Based on recall of parents

\* Data as of 22-02-2010

Urgent on both criteria

UP = Under process

**Table 5: List of samples from AFP Cases & Contacts pending for ITD\***

S.No.	DISTRICT	TEHSIL	EPID	DONSET	AGE (m)	SEX	DOSE	DLOPV	Urgent by Field	¥ NSC Criteria	LABNO.	Date of first stool collection	rRT-PCR
1	LODHRAN	DUNIYA PUR	PB/64/10/008	30-Jan-10	30	F	7+	19-Jan-10	N	N	494	06-Feb-10	SL2
2	SWAT	MATTA	NW/24/10/001	05-Jan-10	8	M	4	15-Jan-10	N	Y	499	08-Feb-10	UP

UP=Under process

€ Based on recall of parents

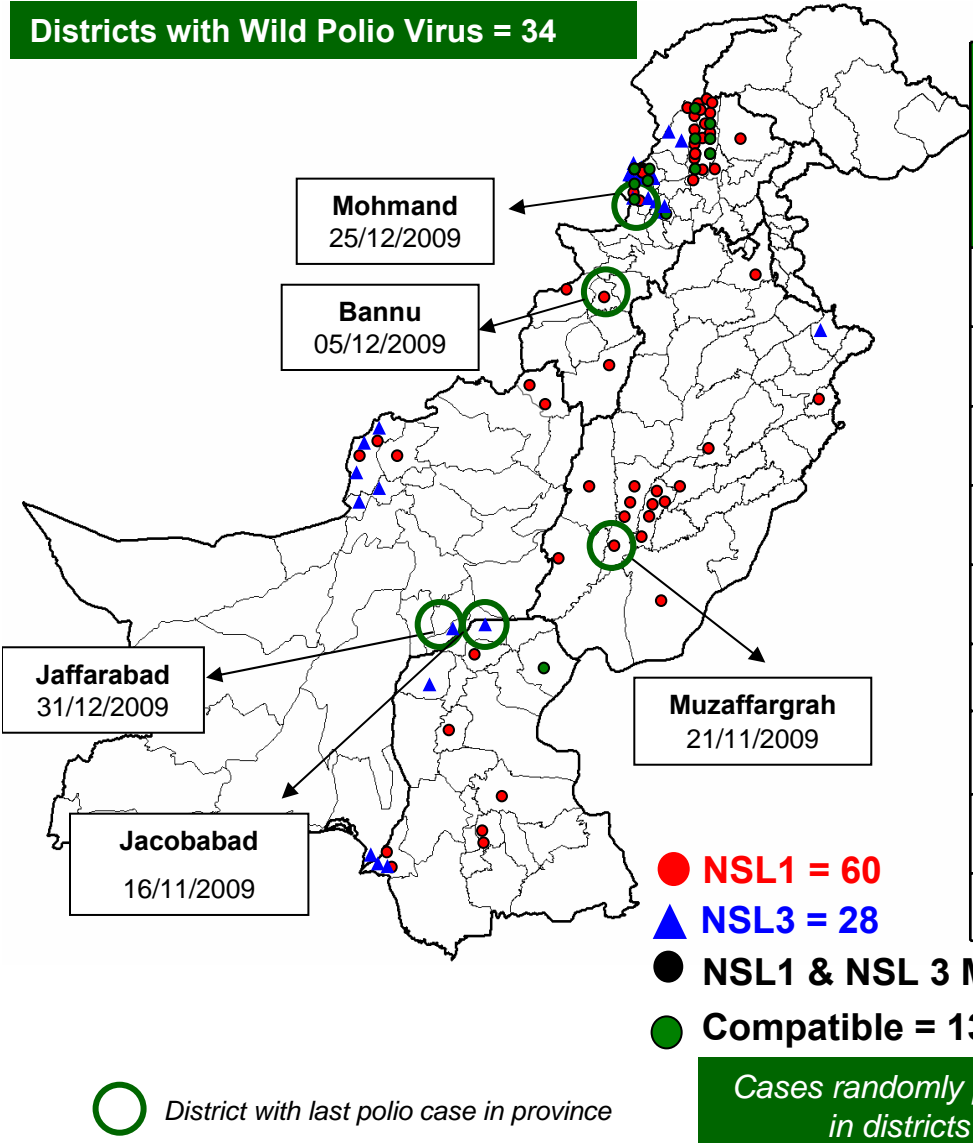
¥ NSC Criteria = Fever , Rapid Progress, Age < 48 months and OPV Doses < 7

\* Data as of 22-02-2010

Discordant, waiting for genomic sequencing results



# Map1: Distribution of Wild Polio Virus cases Pakistan 2009\*

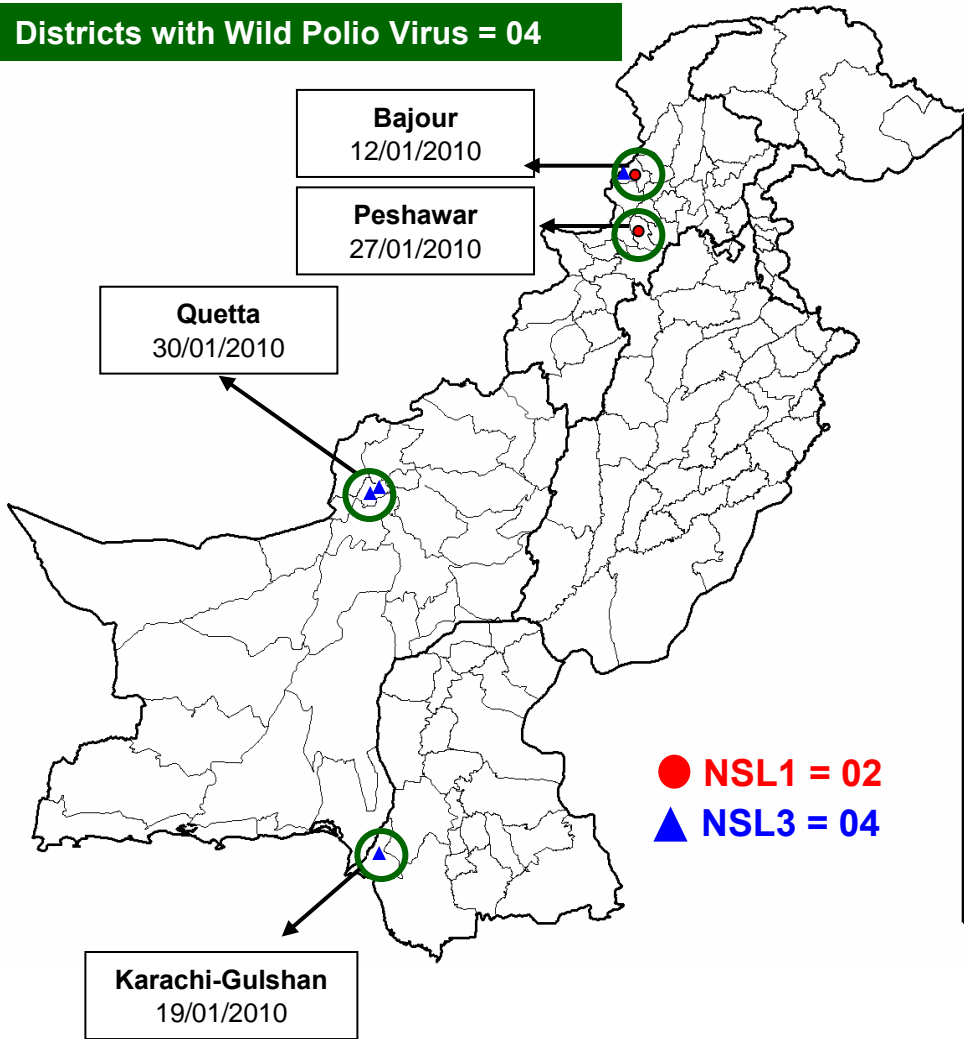


Province/ Country	Date of Last Case		Number of cases 2009*		
	P1	P3	P1	P3	P1 & P3 Mixture
PUNJAB	Nov, 2009	Jan, 2009	16	1	0
SINDH	Aug, 2009	Nov, 2009	7	5	0
NWFP	Dec, 2009	Sep, 2009	24	5	0
FATA	Dec, 2009	Dec, 2009	8	11	1
BALUCHISTAN	Nov, 2009	Dec, 2009	5	6	0
AJK		Jun, 2000	0	0	0
GILGIT-BALTISTAN	Jan, 1998		0	0	0
ISLAMABAD	Sep, 2008	Sep, 2008	0	0	0
PAKISTAN	Dec, 2009	Dec, 2009	60	28	1

\* Afp.rec Data as of 20-02-2010

# Map1.1: Distribution of Wild Polio Virus cases Pakistan 2010\*

Districts with Wild Polio Virus = 04



Province/ Country	Date of Last Case		Number of cases 2010*	
	P1	P3	P1	P3
PUNJAB	Nov, 2009	Jan, 2009	-	-
SINDH	Aug, 2009	Jan, 2009	-	1
NWFP	Jan, 2010	Sep, 2009	1	-
FATA	Jan, 2010	Jan, 2010	1	1
BALUCHISTAN	Nov, 2009	Jan, 2010	-	2
AJK		Jun, 2000	-	-
GILGIT-BALTISTAN	Jan, 1998		-	-
ISLAMABAD	Sep, 2008	Sep, 2008	-	-
PAKISTAN	Jan, 2010	Jan, 2010	2	4

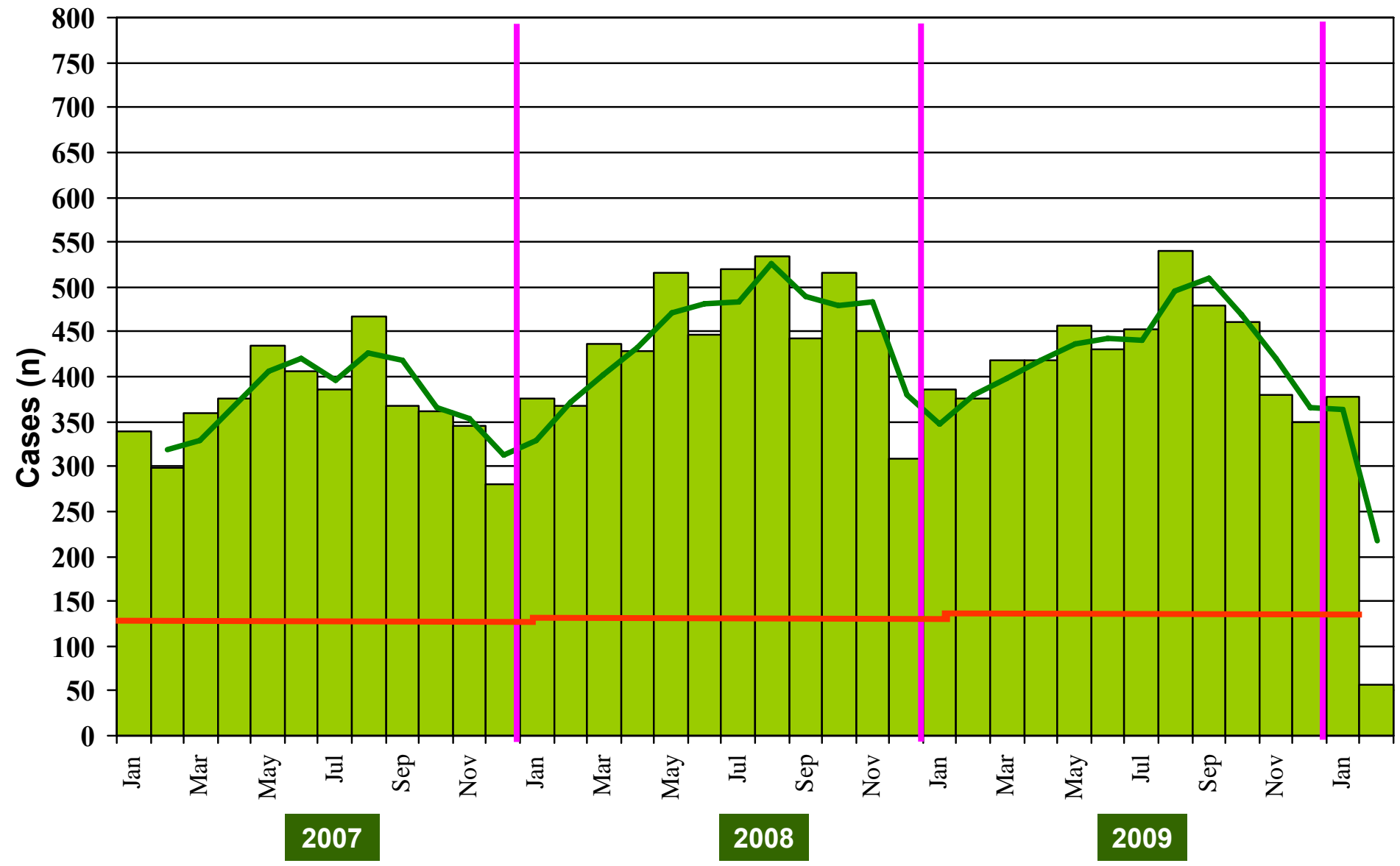
○ District with last polio case in province

\* Afp.rec Data as of 20-02-2010

Cases randomly placed  
in districts

— Provincial Boundary  
— Districts Boundary

**Graph 1: Distribution of AFP Cases by Month, Pakistan 2007-2010\***



**@ Non-polio AFP rate of 2/100,000 children < 15 years**

\*Afp.rec Data as of 20-02-2010

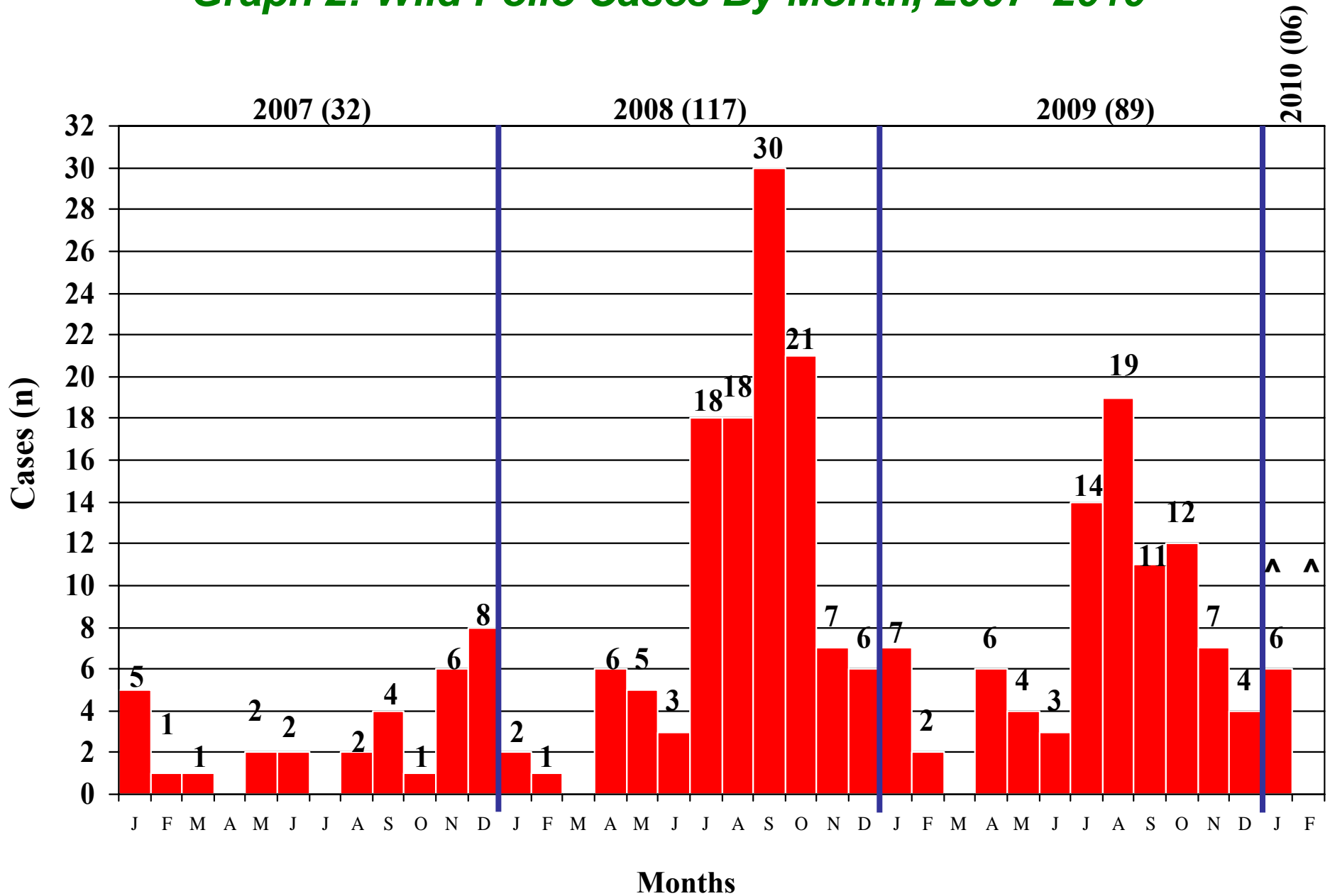
**Table 6: Distribution of AFP Cases By Week of Onset <sup>^</sup>  
Pakistan 2009/2010\* [Week number/Ending on]**

PROVINCE	W 44 07 Nov	W 45 14 Nov	W 46 21 Nov	W 47 28 Nov	W 48 05 Dec	W 49 12 Dec	W 50 19 Dec	W 51 26 Dec	W 52 02 Jan 2010	W 01 09 Jan	W 02 16 Jan	W 03 23 Jan	W 04 30 Jan	W 05 06 Feb	W 06 13 Feb	W 07 20 Feb
PUNJAB	33	37	43	37	28	43	30	25	46	41	42	38	31	29	24	4
SINDH	32	23	25	17	24	16	29	20	18	31	32	22	14	24	11	0
NWFP	21	26	19	10	12	20	23	11	11	22	19	22	15	13	6	0
FATA	2	2	1	0	0	2	3	2	5	0	2	2	0	0	2	0
BALUCHISTAN	10	5	5	6	4	2	4	5	4	4	5	6	4	3	4	0
AJK	0	0	0	1	2	1	0	2	2	3	2	1	0	1	0	0
GILGIT/ BILTISTAN	0	0	1	0	1	0	0	0	0	0	0	0	0	0	0	0
ISLAMABAD	0	1	0	0	0	0	0	0	1	0	0	0	0	0	0	0
PAKISTAN	98	94	94	71	71	84	89	65	87	101	102	91	64	70	47	4

\* Pak Lab.rec Data as of 20-02-2010

<sup>^</sup> MMWR Epidemiological Weeks

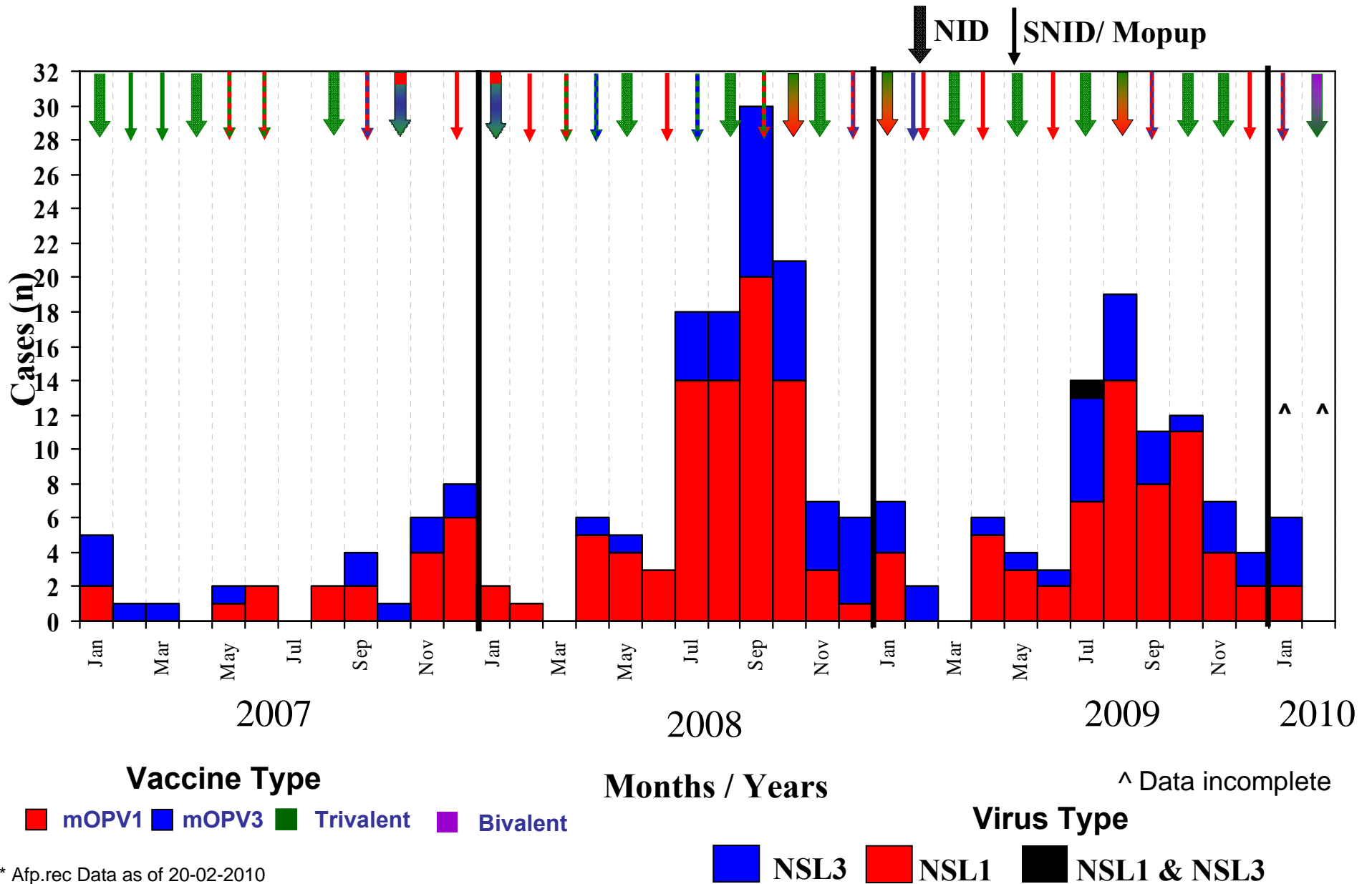
**Graph 2: Wild Polio Cases By Month, 2007- 2010\***



\* Afp.rec Data as of 20-02-2010

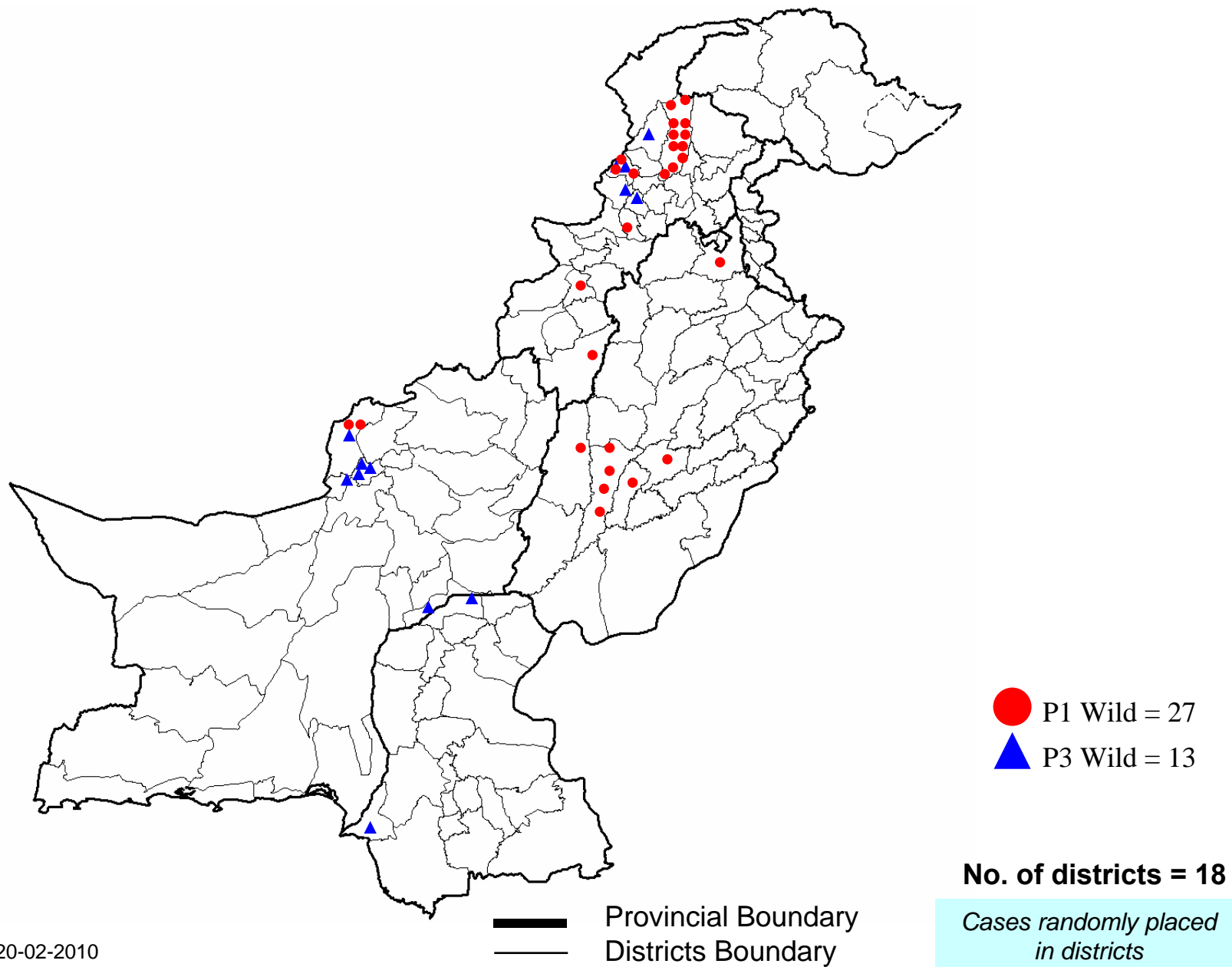
^ Data incomplete

**Graph 3: Confirmed Polio Cases By Poliovirus Type, 2007-2010\***



\* Afp.rec Data as of 20-02-2010

## Map 2: Wild Polio cases in the last 6 months September 2009 to February 2010\*

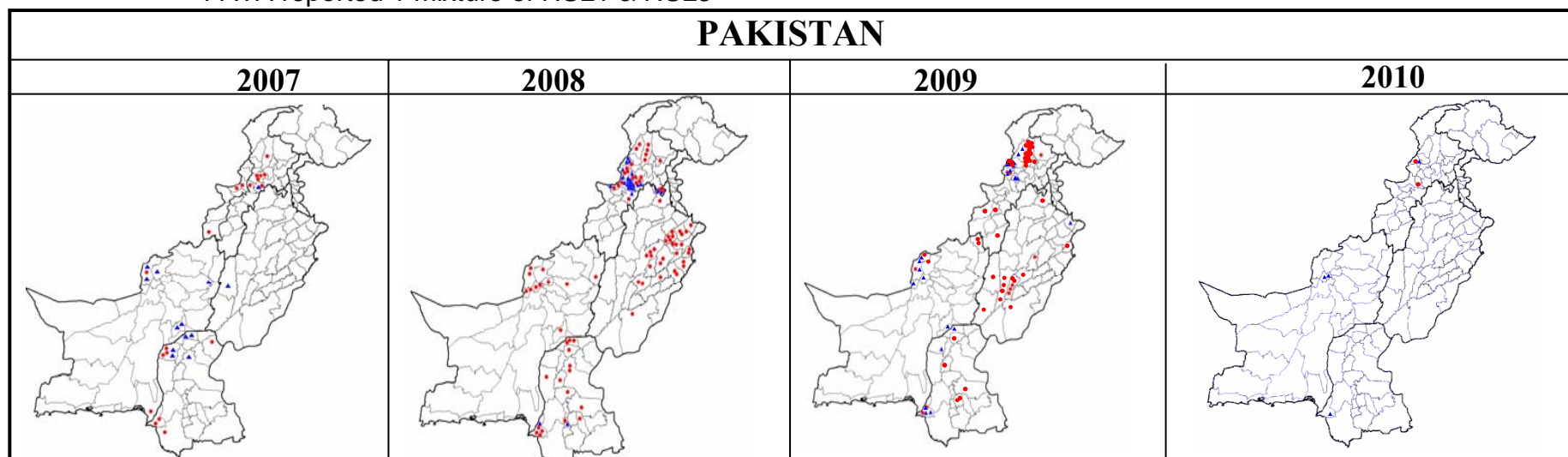


\* Afp.rec Data as of 20-02-2010

## Table 7: Polio Eradication Update, Pakistan 2007-2010\*

Province	Polio 1				Polio 3				Total Wild			
	2007	2008	2009	2010	2007	2008	2009	2010	2007	2008	2009	2010
PUNJAB	0	31	16	0	1	0	1	0	1	31	17	0
SINDH	7	16	7	0	5	2	5	1	12	18	12	1
NWFP	7	15	24	1	1	23	5	0	8	38	29	1
FATA <sup>^</sup>	3	7	8	1	0	7	11	1	3	14	20 <sup>^</sup>	2
BALUCHISTAN	2	11	5	0	6	0	6	2	8	11	11	2
AJK	0	0	0	0	0	0	0	0	0	0	0	0
Gilgit-Baltistan	0	0	0	0	0	0	0	0	0	0	0	0
ISLAMABAD	0	3	0	0	0	2	0	0	0	5	0	0
<b>PAKISTAN</b>	<b>19</b>	<b>81</b>	<b>60</b>	<b>2</b>	<b>13</b>	<b>36</b>	<b>28</b>	<b>4</b>	<b>32</b>	<b>117</b>	<b>89<sup>^</sup></b>	<b>6</b>

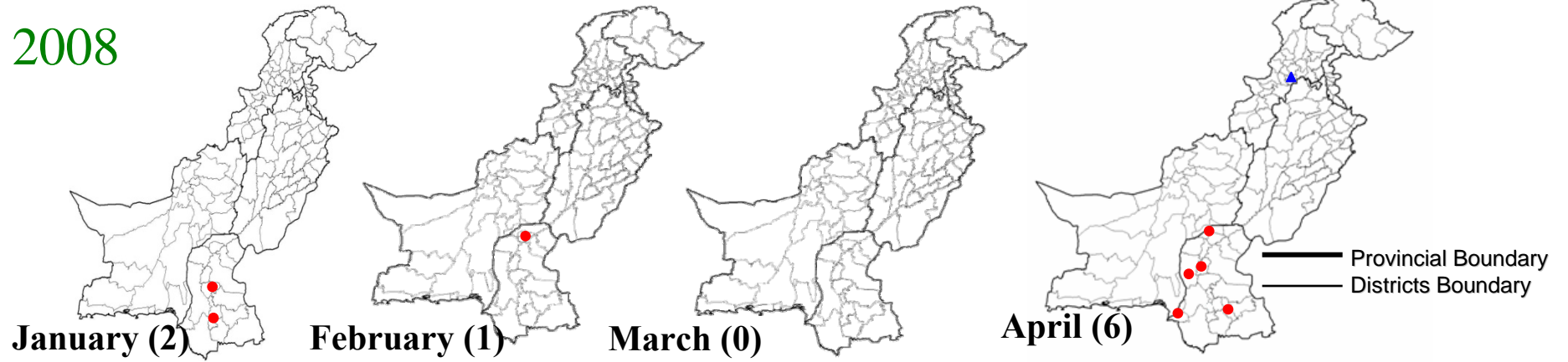
<sup>^</sup> FATA reported 1 mixture of NSL1 & NSL3



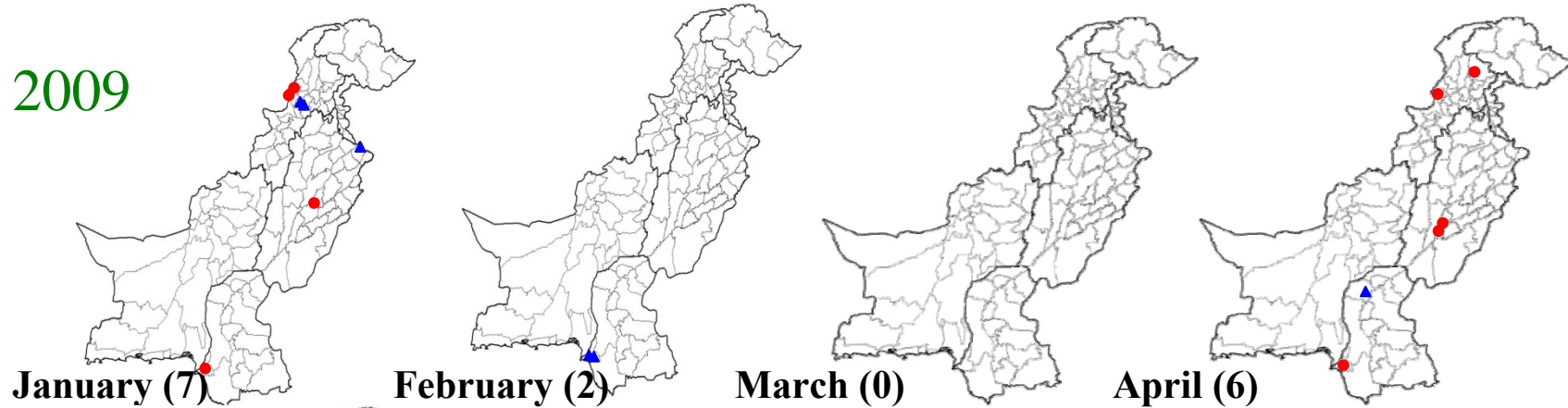
\* Afp.rec Data as of 20-02-2010

# Map 3: Monthly Comparison of P1 & P3 Polio Cases 2008-2010\*

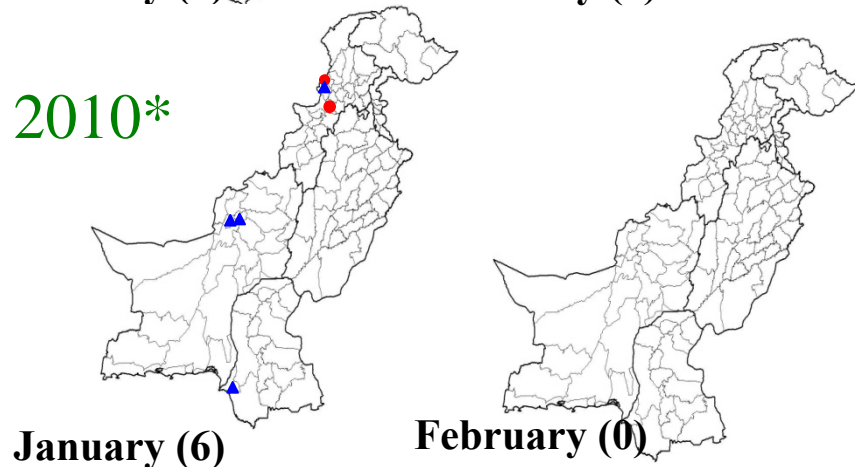
2008



2009



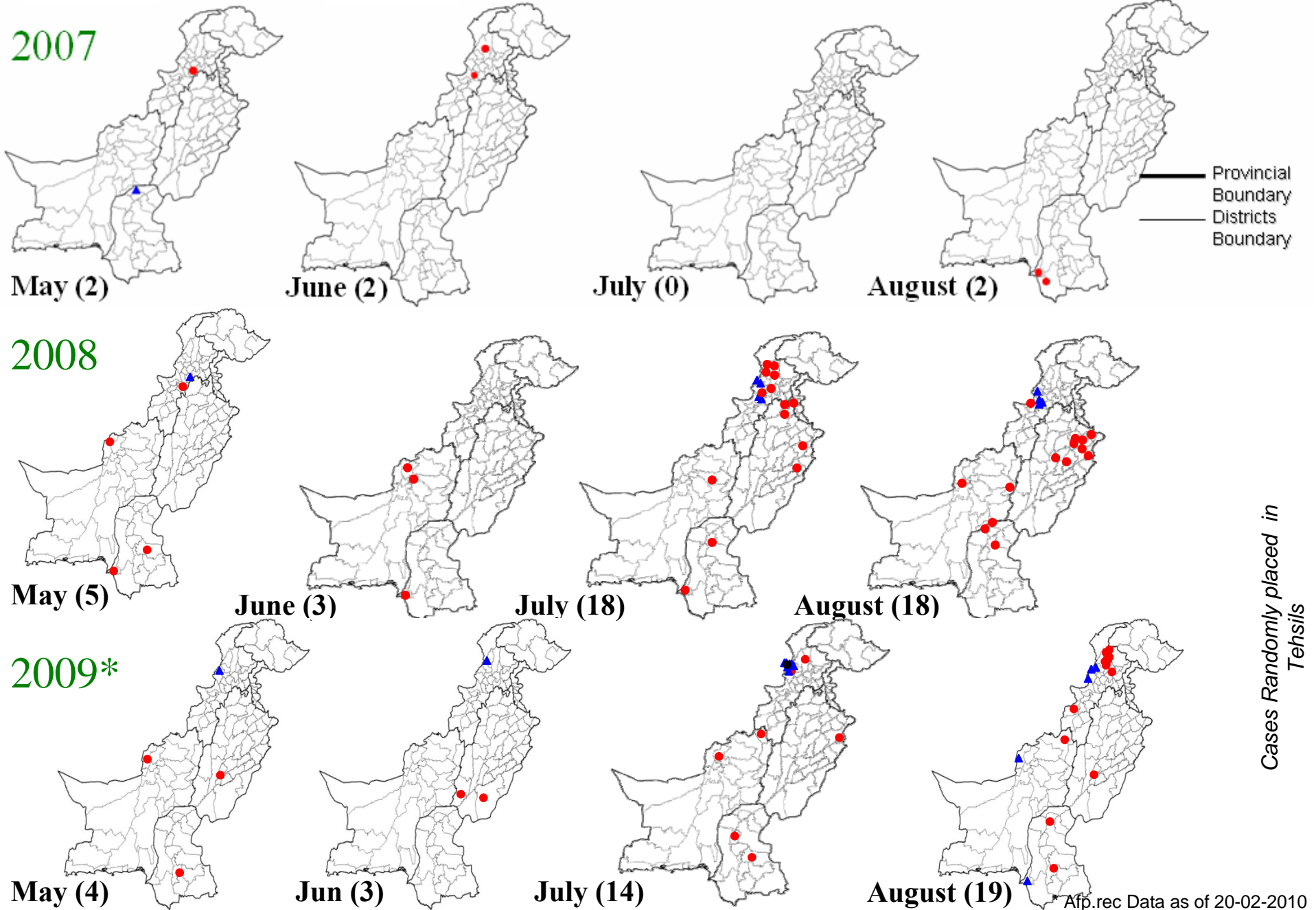
2010\*



Cases Randomly placed in Tehsils

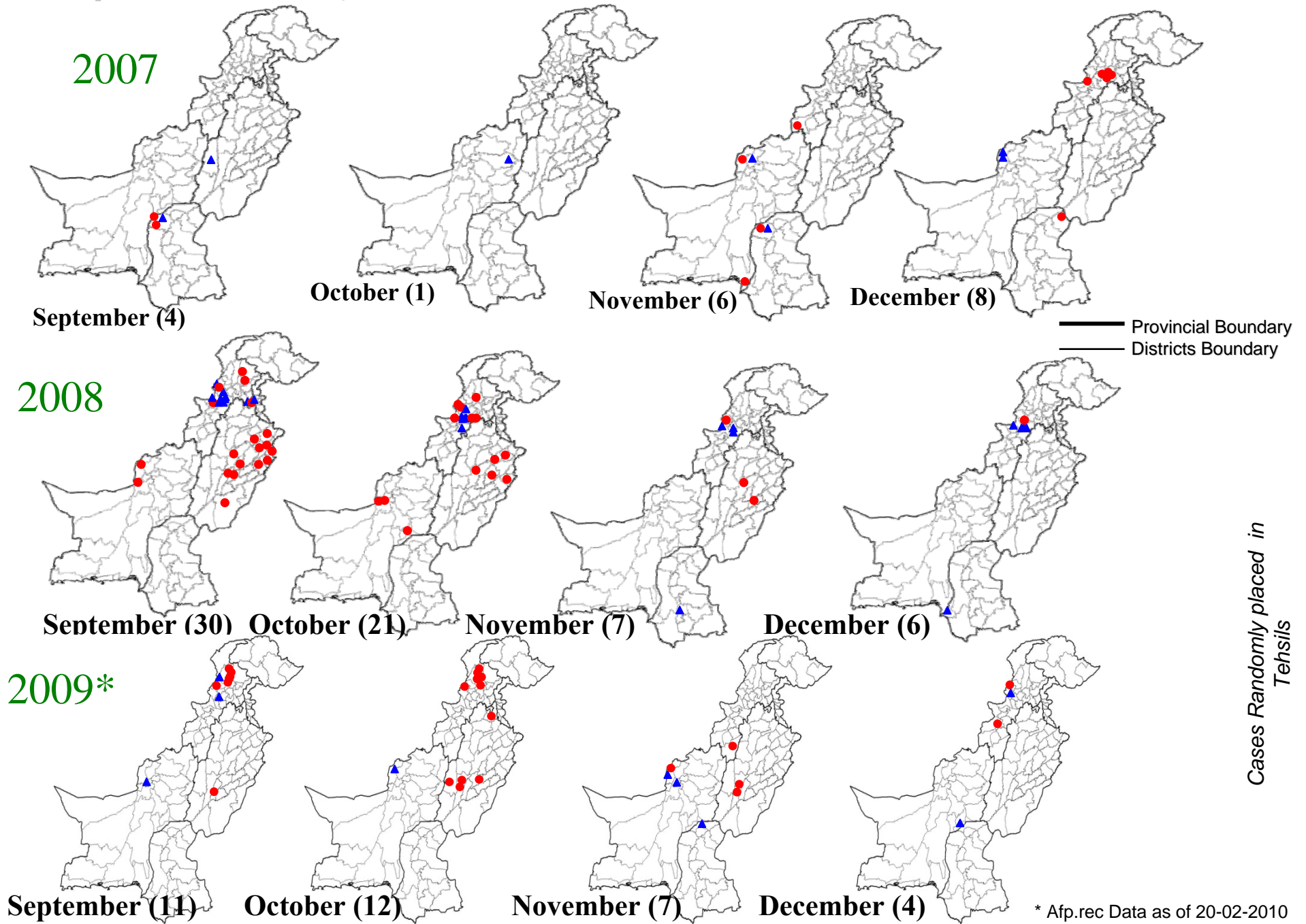
\* Afp.rec Data as of 20-02-2010

# Map 3.1: Monthly Comparison of P1 & P3 Polio Cases 2007-2009\*



\* Afp.rec Data as of 20-02-2010

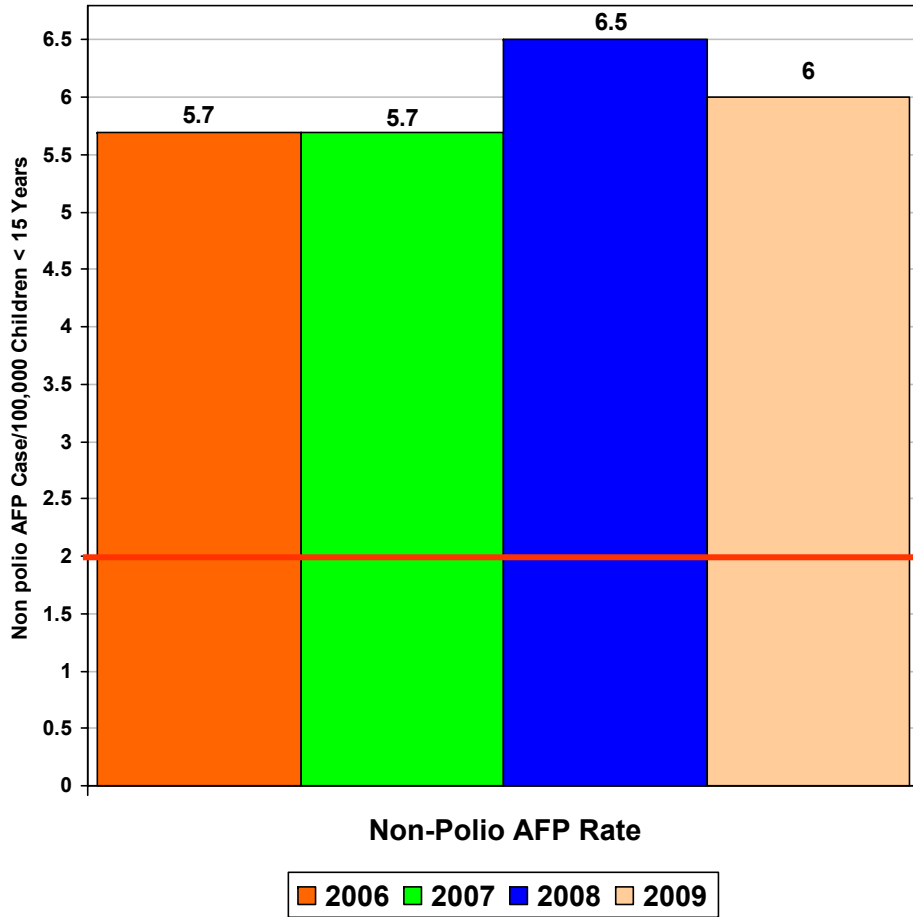
# Map 3.2: Monthly Comparison of P1 & P3 Polio Cases 2007-2009\*



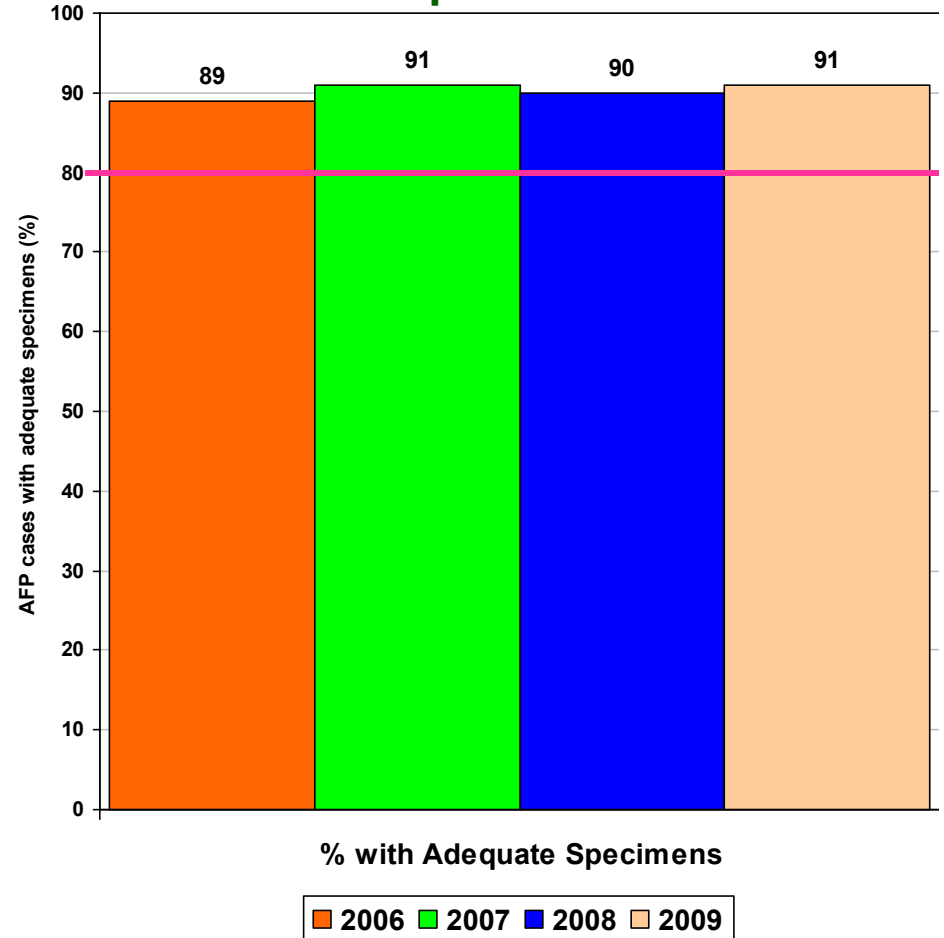
\* Afp.rec Data as of 20-02-2010

# Key Surveillance Indicators 2006-2009\*

## Graph 4\*\*



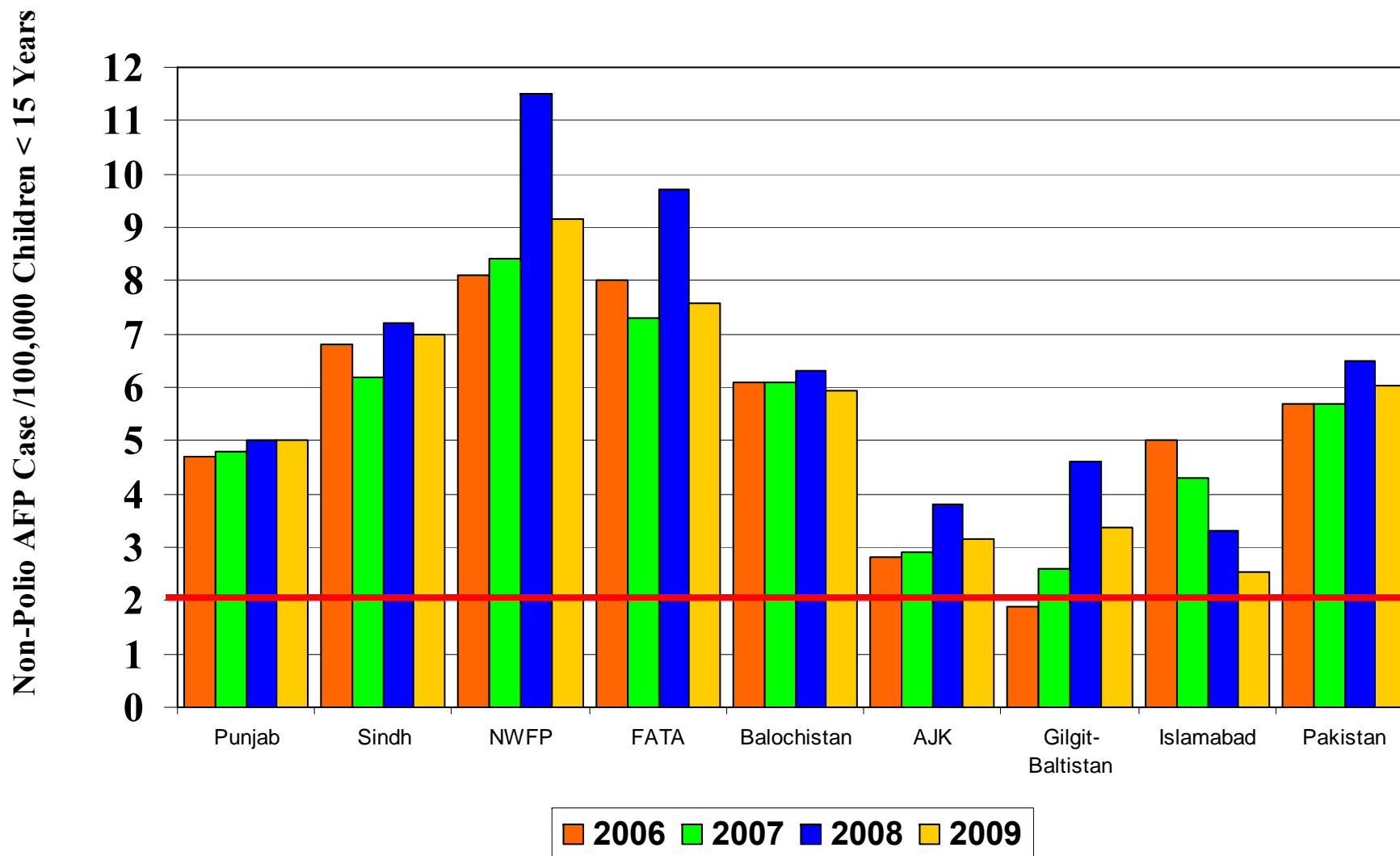
## Graph 5



\* Afp.rec Data as of 20-02-2010

\*\*Up to Week No. 52 ended on 02<sup>nd</sup> January 2009

# Graph 4.1 :Non Polio AFP Rate By Province, 2006-2009\*



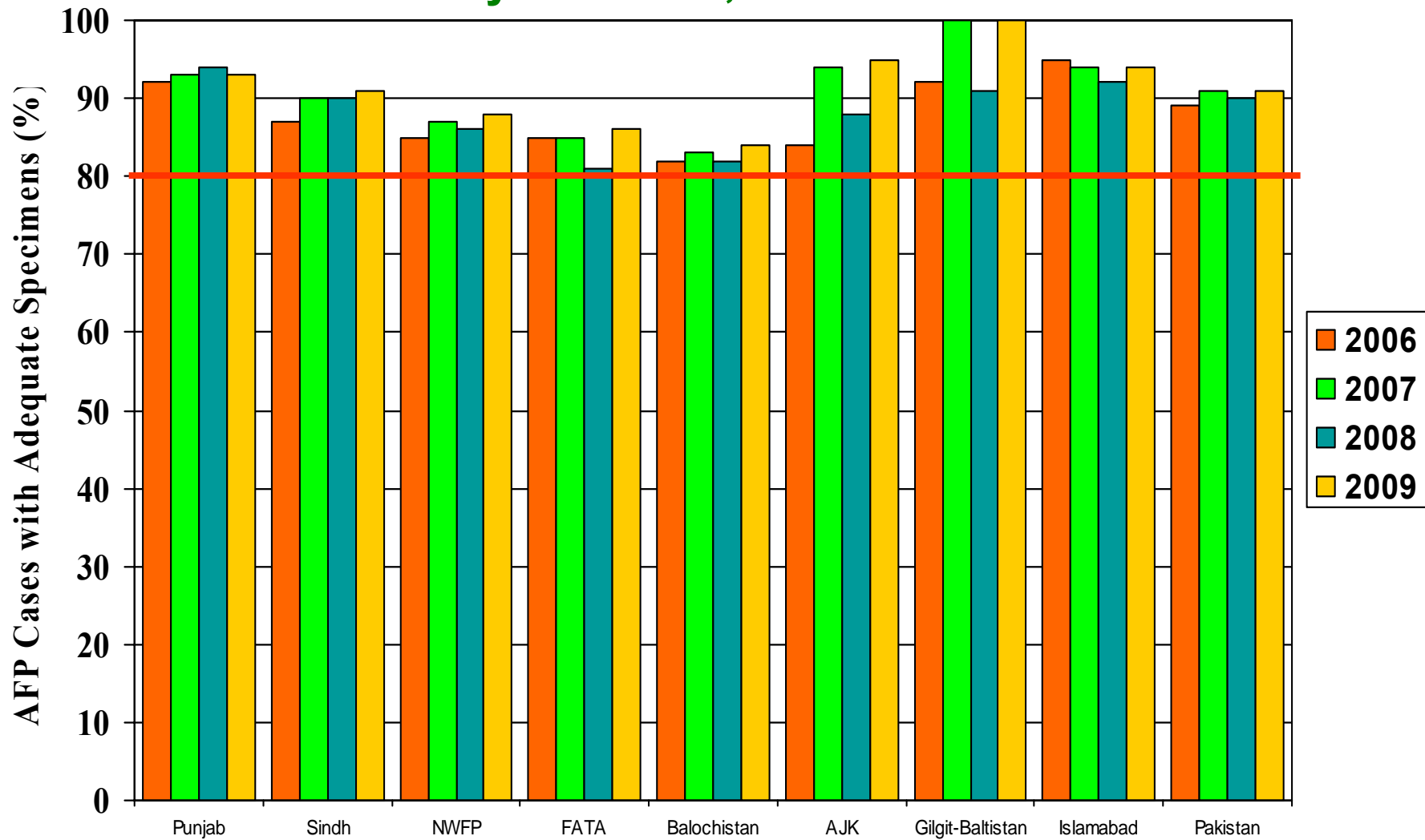
Up to Week No. 52 ended on 02<sup>nd</sup> January 2009

Target Non-Polio AFP Rate 2/ 100000

\* Afp.rec Data as of 20-02-2010

# Graph 5.1: Percent AFP Cases with Adequate Specimens

## By Province, 2006-2009\*

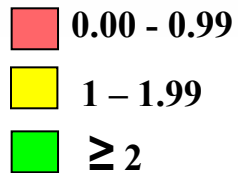
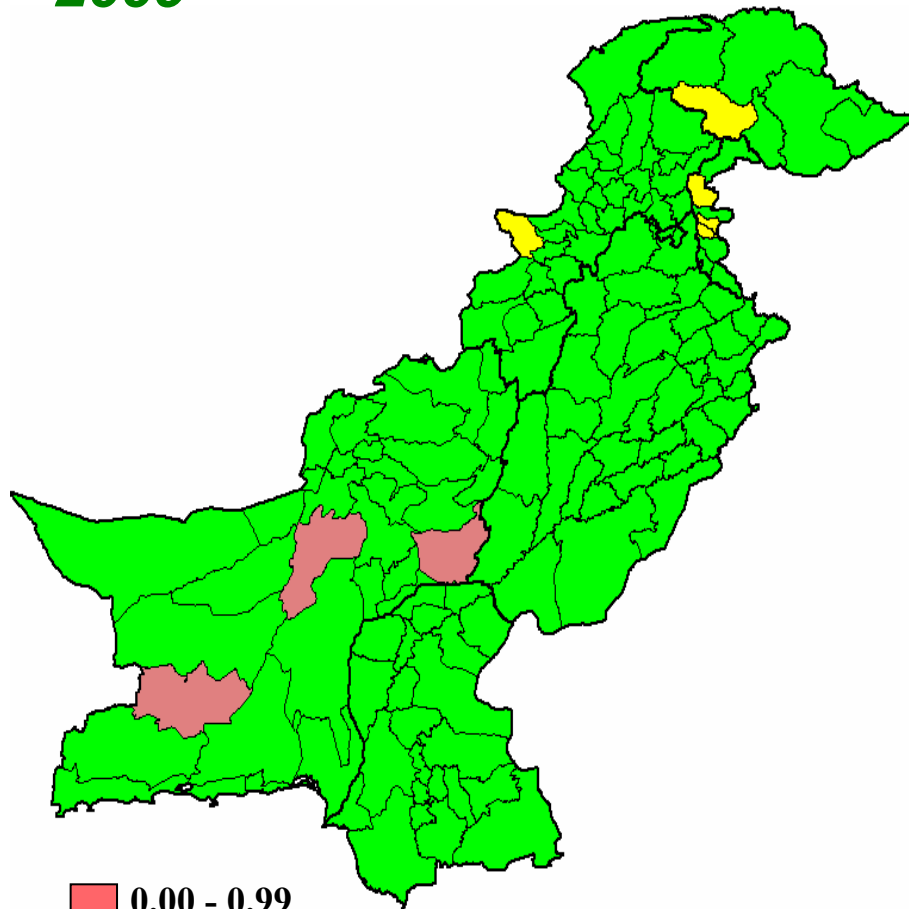


\* Afp.rec Data as of 20-02-2010

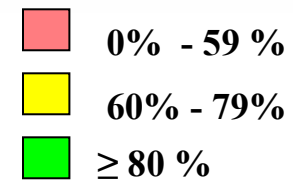
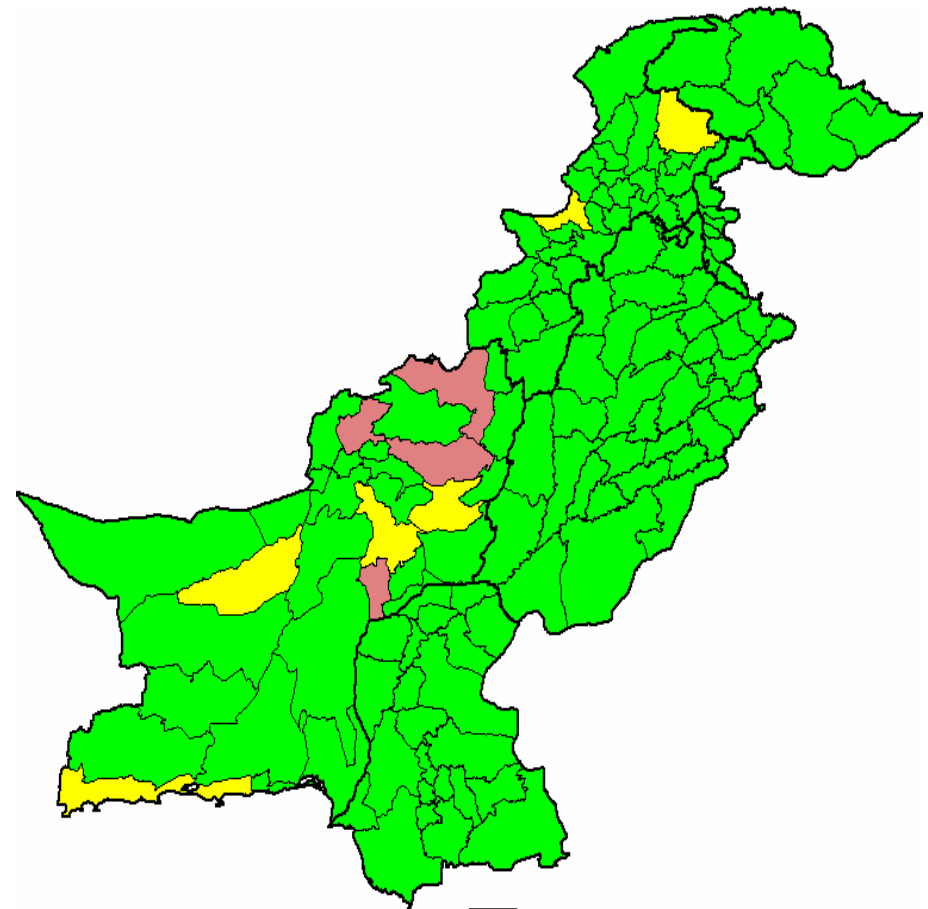
**Target Adequate Sample cases = 80%**

**Map 4: *Non-Polio AFP Rate by District***

**2009\***



**Map 5: *Percent AFP Cases with Adequate Specimens, By District – 2009\****

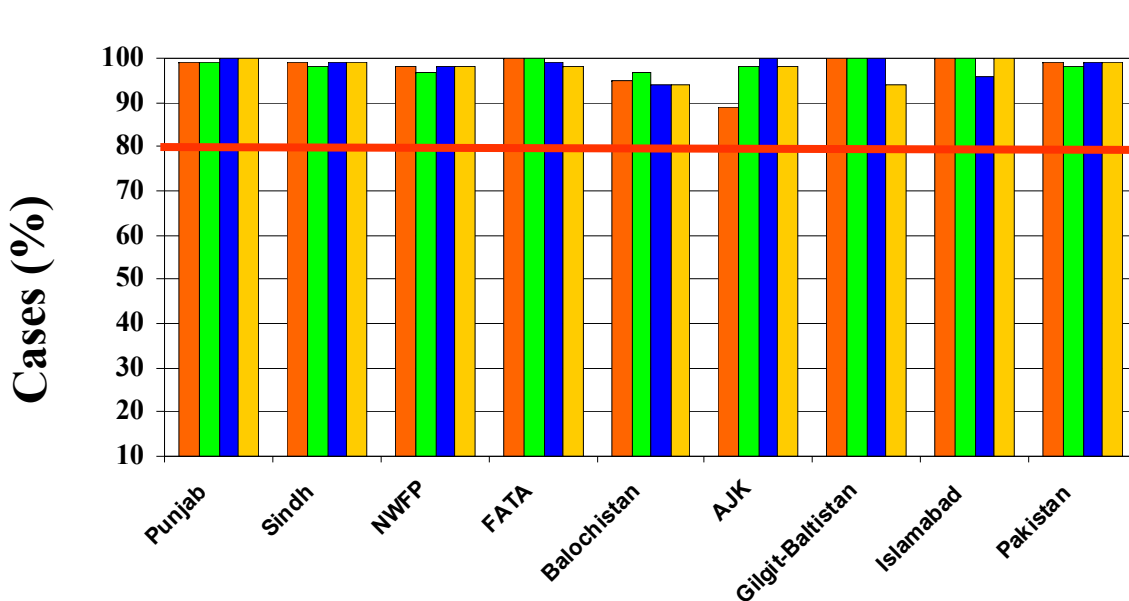
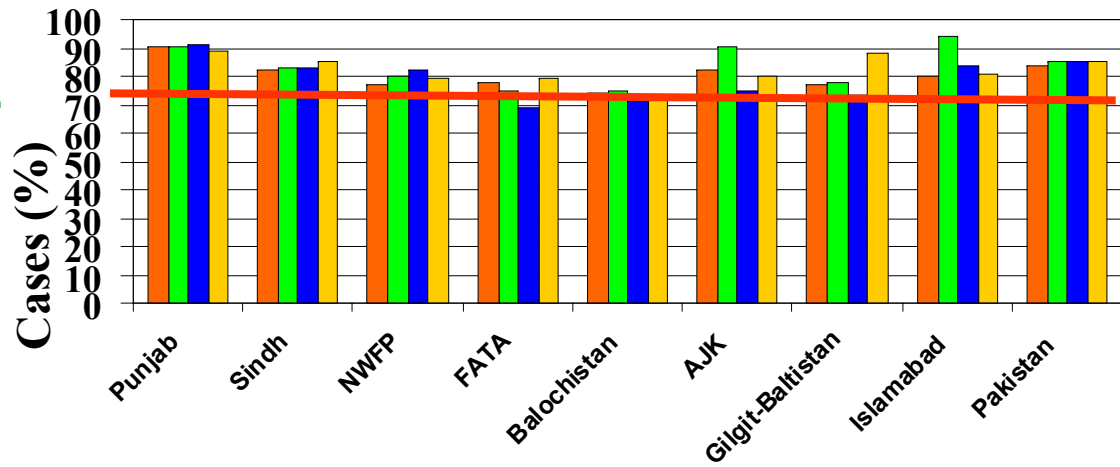


Up to Week No. 52 ended on 2<sup>nd</sup> January 2010

\* Afp.rec Data as of 20-02-2010

## Graph 6: Percent AFP Cases Notified within 07 days of paralysis onset

2006 ~ 2009\*, By Province



Provinces

Target Notified with in 7 days = 80%

## Graph 7: Percent AFP Cases Investigated within 48 hours of notification 2006 ~ 2009\*, By Province

2006 2007 2008 2009

Provinces

Target Investigated within 48 hours = 80%

\* Afp.rec Data as of 20-02-2010

**Table 8: AFP CASES PENDING FOR CLASSIFICATION WITH DATE OF ONSET MORE THAN 90 DAYS\***

S. No	DISTRICT	TEHSIL	EPID	SEX	AGE	DONSET	DOSE €	DSTOOL1	DSTOOL2	LAB	FEVER	ASYM	PROG	FUP	PEND (DAYS)
1	GUJRAT	SARAI ALAMGIR	PB/23/09/059	F	18	28-Oct-09	10	23-Nov-09	24-Nov-09	NVI	Y	Y	Y	Y	113
2	LODHRAN	DUNYAPUR	PB/64/09/071	M	16	17-Nov-09	15	08-Jan-10	10-Jan-10	EV	Y	Y	Y	Y	93
3	SIALKOT	DASKA	PB/25/09/054	F	54	20-Oct-09	8	04-Nov-09	06-Nov-09	EV	Y	Y	UK	Y	121
4	KAMBAR	MIRO KHAN	SD/55/09/035	M	60	15-Oct-09	10	04-Dec-09	05-Dec-09	NVI	Y	N	N	Y	126
5	KHAIRPUR	KOT DIJI	SD/43/09/082	F	36	11-Nov-09	11	01-Dec-09	02-Dec-09	NVI	Y	Y	Y	Y	99
6	KHIJAMSHEED	JAMSHEED	SD/66/09/012	F	87	18-Oct-09	20	11-Nov-09	12-Nov-09	NVI	N	Y	Y	Y	123
7	KHILANDHI	LANDHI	SD/69/09/018	M	59	18-Nov-09	33	02-Dec-09	04-Dec-09	EV	N	N	Y	Y	92
8	SANGHAR	TANDO ADAM	SD/32/09/067	F	108	05-Nov-09	10	03-Dec-09	05-Dec-09	NVI	Y	N	Y	Y	105
9	SUKKUR	NEW SUKKUR	SD/41/09/029	M	14	17-Oct-09	7	10-Nov-09	11-Nov-09	EV	Y	Y	N	Y	124
10	T.ALLAHYAR	CHAMBER	SD/27/09/032	M	96	09-Nov-09	7	23-Nov-09	25-Nov-09	NVI	Y	Y	Y	Y	101
11	CHARSADA	SHABQADAR	NW/31/09/057	M	9	03-Oct-09	0	14-Nov-09	15-Nov-09	NVI	Y	Y	Y	Y	138
12	CHARSADA	CHARSADA	NW/31/09/065	M	144	13-Oct-09	1	28-Jan-10	29-Jan-10	NVI	N	N	Y		128
13	CHARSADA	CHARSADA	NW/31/09/066	F	20	25-Sep-09	21	Stool not collected due to late notification			N	Y	N	Y	146
14	MALAKAND	DARGAI	NW/20/09/026	F	23	14-Nov-09	15	14-Dec-09	15-Dec-09	NVI	Y	Y	Y	Y	96
15	MARDAN	MARDAN	NW/40/09/108	M	16	13-Nov-09	13	30-Dec-09	31-Dec-09	NVI	N	Y	N	Y	97
16	MARDAN	TAKHT BHAI	NW/40/09/111	M	27	26-Sep-09	18	Stool not collected due to late notification			Y	Y	Y	Y	145
17	PESHAWAR	PESHAWAR	NW/30/09/128	M	168	31-Aug-09	99				Y	Y	Y	Y	Y
18	SWAT	MATTA	NW/24/09/073	F	12	10-Nov-09	5	02-Dec-09	03-Dec-09	NVI	N	Y	Y		100
19	KOHLU	MAWAND	BN/34/09/004	M	120	05-Nov-09	0	30-Dec-09	31-Dec-09	NVI	Y	N	Y		105

€ Based on recall of parents

\* Afp.rec Data as of 20-02-2010

Follow-up not done

FUP = Residual Weakness at 60 days follow up,  
UK = Unknown